

Attachment 10

CONSULTATION SUMMARY REPORT

16.01.2025



Delivered by

Table of Contents

About this Consultation Summary Report	4
1. Introduction	5
1.1 About the Victorian Renewable Energy Terminal	5
1.1.1 Project Design Options	6
1.2 Project objectives	8
1.3 Project timeline	8
1.4 Community profile	8
1.5 Traditional Owners	9
1.6 Response to previous EPBC Referral	9
2. Engagement Overview	10
2.1 Engagement Objectives	10
2.2 Government legislation, policy and guidelines	10
2.3 Victorian Environmental Effect Statement (EES)	11
2.4 IAP2 Spectrum of Public Participation	11
2.5 Victorian Government Public Engagement Framework	11
2.6 Committing to engagement principles	12
2.7 Phased engagement approach and plan	13
3. Engagement and feedback to date	16
3.1 Engagement methods	16
3.2 Engagement snapshot	16
3.3 Summary of project stakeholder engagement	17
3.3.1 Traditional Owners	18
3.3.2 Government and agency coordination	18
3.3.3 Environmental and conservation groups	19
3.3.4 Consultative Community Committee	19
3.4 Feedback summary	20
3.5 How feedback will inform the project	21
3.5.1 Project Community Reference Group (CRG)	22
4. Stakeholder matrix	23
4.1 Government (Elected)	23
4.2 Government agencies and authorities - State	24
4.3 Government agencies and authorities - Federal	25
4.4 Traditional Owners	26
4.5 Local government	27
4.6 Commercial entities	28
4.7 Business and tourism	28
4.8 Offshore Wind proponents	29

4.9	Emergency services	29
4.10	Water authorities	30
4.11	Environment, community and recreation groups	30
4.12	Media	31
4.13	Local partnership/Education	32

About this Consultation Summary Report

This report describes the approach Port of Hastings Corporation (PoHC) has used to inform and involve Traditional Owners, communities, stakeholders, industry and government in the planning of the Victorian Renewable Energy Terminal Project (the Terminal).

Consultation is a key aspect of project development, design, and the environmental assessment process, and significant community and stakeholder engagement has been undertaken since 2022 to inform the development of the Victorian Renewable Energy Terminal.

This Consultation Summary Report is designed to:

- > Describe how the Port of Hastings Corporation has consulted with stakeholders and local communities about the Victorian Renewable Energy Terminal
- > Provide context as part of the project EPBC referral on communication and engagement activities
- > Capture feedback themes and topics heard to date through engagement
- > Provide an overview of planned consultation activities for the Victorian Renewable Energy Terminal through the Victorian Government's Environmental Effect Statement Process.

Acknowledgment of Traditional Owners

We acknowledge and pay our respects to Aboriginal and Torres Strait Islanders, as the original custodians of Australia's land and waters, their unique ability to care for Country, and their deep spiritual connection to it. We honour Elders past and present whose knowledge and wisdom have ensured the continuation of culture and traditional practices.

We are committed to genuinely partnering and meaningfully engaging with Australia's Traditional Owners and Aboriginal communities to support the protection of Country, the maintenance of spiritual and cultural practices, and their broader aspirations in the 21st century and beyond.

The Bunurong Land Council Aboriginal Corporation (BLCAC) is the Registered Aboriginal Party (RAP) for the land and waters on which our proposed project is located.

1. Introduction

1.1 About the Victorian Renewable Energy Terminal

Victoria is establishing a thriving offshore wind sector – paving the way for the state to host the first offshore wind energy project in Australia. Offshore wind projects require very large components which need to be manufactured, transported, stored and transferred to the offshore wind site for installation. The scale, length and weight of these components place unique heavy-duty operational requirements on ports and require a significant land area adjacent to ship berths, pavement strength and shipping channel capacity.

The site is situated within the Port of Hastings, which is a major transport gateway supporting key industries associated with fuel imports and oil, gas and steel production. It is located to the southeast of Melbourne, approximately 72km from Melbourne’s CBD and 2.6km northeast of the centre of Hastings (Figure 1)

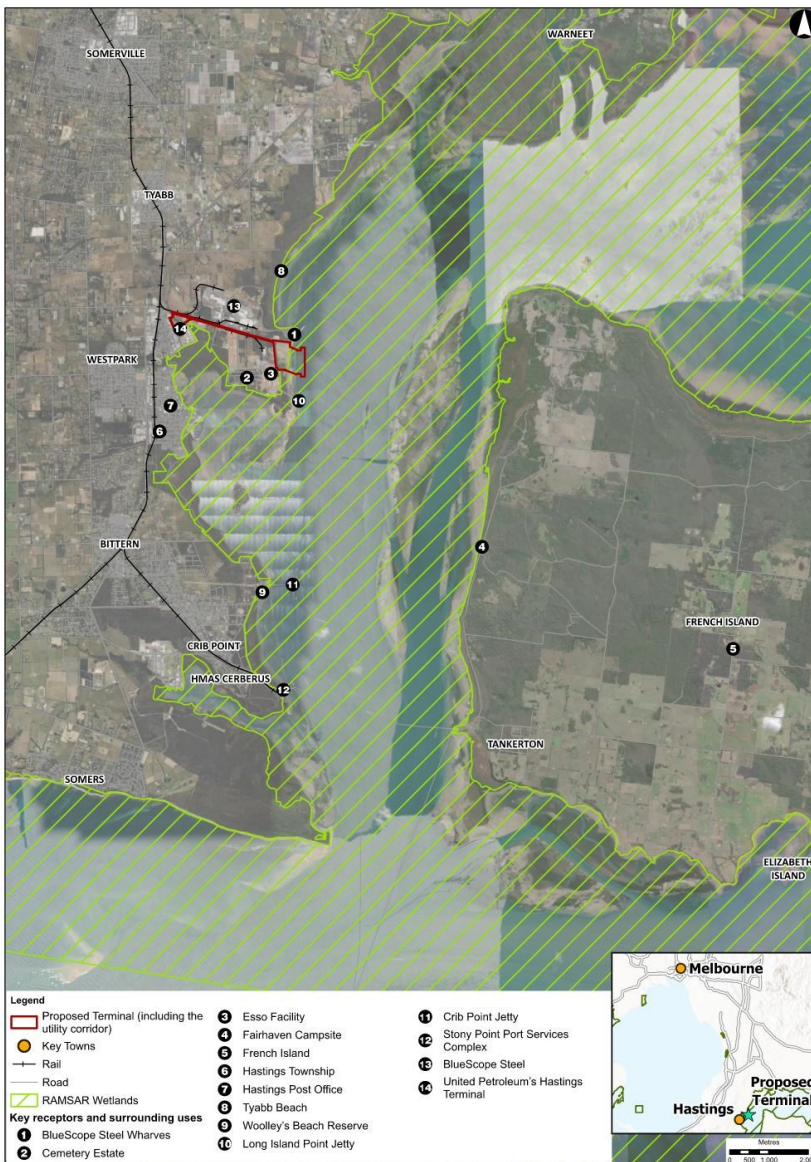


Figure 1 Location of the Terminal

No port in Victoria is currently equipped to support offshore wind construction at the scale required to meet Victoria's ambitious offshore wind targets.

To accommodate this, the Victorian Government is planning the development of Victoria's first dedicated offshore wind port facility to unlock the benefits of offshore wind and provide energy security to Victoria.

The Terminal is proposed to be developed within the Port of Hastings, which is a major transport gateway supporting key industries associated with fuel imports and oil, gas and steel production. Port of Hastings is located approximately 70 kilometres south-east of Melbourne and 2.6km from the Hastings township.

The Terminal will be developed at the Old Tyabb Reclamation Area (OTRA) and adjoining coastal waters within the existing port precinct between Esso's Long Island Point liquid berth and BlueScope Steel wharves.

The Old Tyabb Reclamation Area (OTRA) site borders the Western Port Ramsar site, an area identified to be of international importance, particularly to waterfowl habitat. The Ramsar site extends across the Western Port area (approximately 60,000 hectares) which is connected to Bass Strait by a wide channel between Flinders and Phillip Island, and a narrow channel between San Remo and Phillip Island.

The Terminal Project Area (as presented in Figure 2) is the area required for the development of the infrastructure (excluding any potential utility connections outside the site boundary) and includes:

- > The OTRA site (which requires ground improvement and pavement construction)
- > Dredging area
- > Reclamation area
- > Wharf construction area

The Terminal project is in the early stages. As the project is designed and developed, the PoHC will consult with Traditional Owners, communities, stakeholders and industry to understand and recognise important environmental, community and heritage values of Western Port.

1.1.1 Project Design Options

Following the Commonwealth Government's decision on the previous project referral, PoHC considered and assessed several design options for the Victorian Renewable Energy Terminal.

The current design options reflect significant reductions to the dredge and reclamation footprints compared to the 2023 referral design and will continue to be refined as part of the EES process.

PoHC has sought stakeholder and community feedback on this project design and will continue to provide opportunities to input into the design through face-to-face meetings, consultation sessions and meetings with PoHC throughout the EES process.

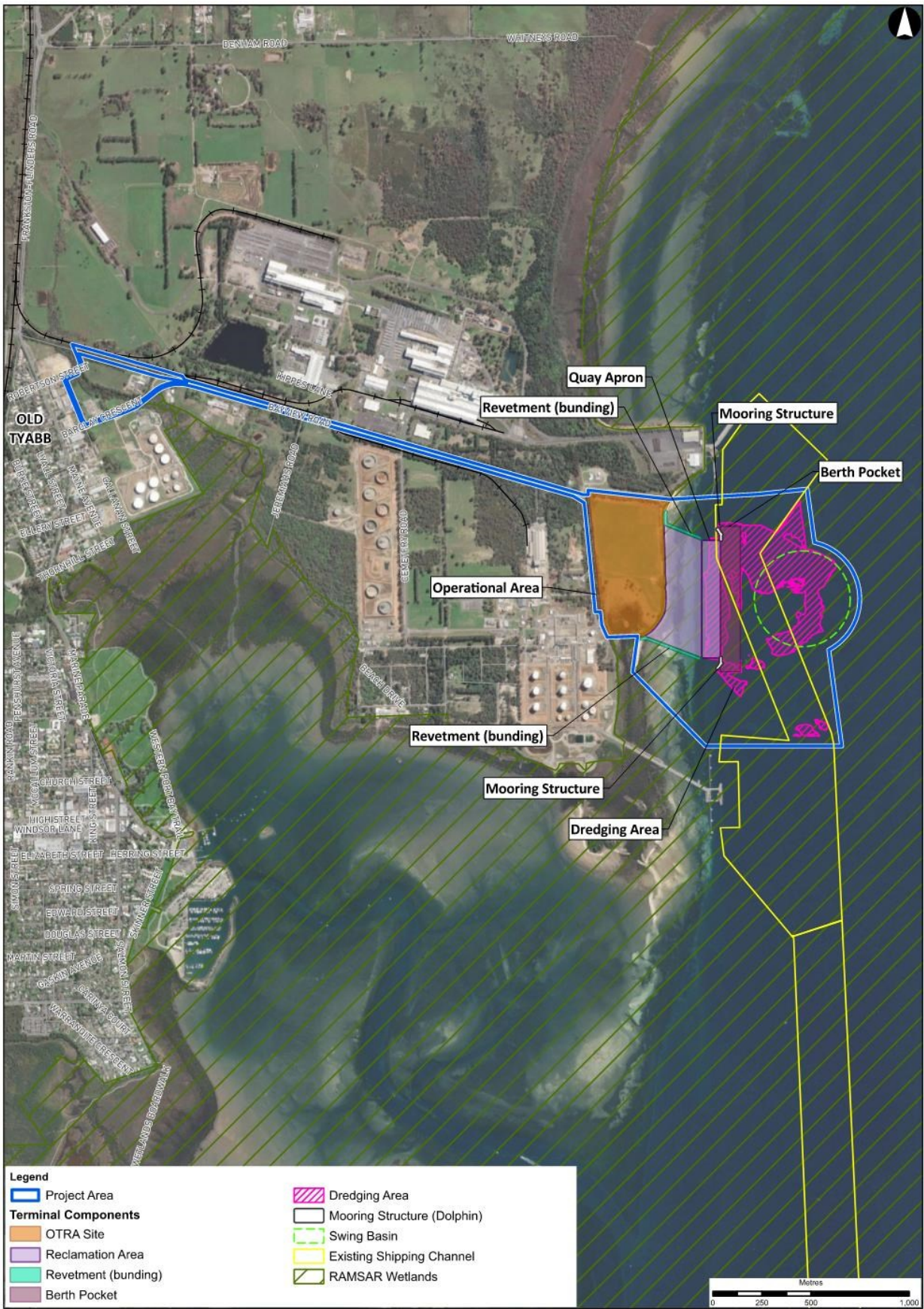


Figure 2 Terminal Project Area

1.2 Project objectives

The development of suitable port facilities is critical to achieve the Victorian Government's ambitious offshore wind targets. Offshore wind ports need heavy-duty pavements able to withstand the component loads, as well as large areas of available land close to a deep water channel to receive, store and assemble them. There is currently no port in Victoria suitable to support offshore wind.

The terminal will enable the import, storage and assembly of offshore wind components, supporting offshore wind farms across Victoria, meeting the following objectives:

1. Supporting wind farm developers with the installation of fixed foundations offshore wind turbines, enabling the State Government's commitment to offshore wind energy generation of 2GW by 2032, 4GW by 2035 and 9GW by 2040.
2. Provide a dedicated location for storage, assembly, and construction support to the installation and commissioning of wind turbine generators and fixed foundation units
3. Provide no net change to port trade capacity in Victoria

Further, the Victorian Renewable Energy Terminal is key to enabling infrastructure to realise Victoria's transition to renewable energy.

1.3 Project timeline

Table 1 provides an overview of environmental assessments, approvals, and construction of the Terminal project:

Table 1 Project timeline

Timeframe	Project timeline
2023 - 2025	<ul style="list-style-type: none">• Environmental monitoring and surveys• Environmental impact assessment
2025 – 2027	<ul style="list-style-type: none">• Environmental impact assessment• Project approvals (inc. submissions and assessments)
2027	<ul style="list-style-type: none">• Construction of the Terminal commences (subject to necessary approvals)
End of 2020s	<ul style="list-style-type: none">• Operation of the Terminal
2032+	Target generation of 2GW of offshore wind energy (by OSW proponents)
2035+	Target generation of 4GW of offshore wind energy (by OSW proponents)
2040+	Target generation of 9GW of offshore wind energy (by OSW proponents)

1.4 Community profile

The Port of Hastings is situated on the western side of Western Port around the suburbs of Tyabb, Hastings, Bittern and Crib Point. Nearby suburbs include Somers, Balnarring, Merricks, Merricks North, Shoreham, Red Hill, Red Hill South, Tuerong, Moorooduc, Somerville, and Pearcedale. The Port of Hastings is within the Mornington Peninsula Shire Council local government area. According to 2021 [Australian Bureau of Statistics](#) (ABS) data, notes that the region of Hastings–Somers (which includes the townships of Crib Point, Somers, Balnarring Beach, Balnarring, Bittern, and Hastings) has:

- > Over 24,000 people.
- > A median age is 42 years, with 17.6% of the population aged under 14 years old and 22.4% aged over 65 years old.
- > A gender distribution of 49.6% male (11,879) and 50.4% female (12,086).
- > 2% of residents (468) identified as aboriginal and/or Torres Strait Islander

- > Over 90% (21,661) used only English at home as a language, with Italian (0.3%), German (0.3%) and Tagalog (0.3%) as the three highest languages used as home, other than English
- > A weekly median family income of \$1,839, and median household income of \$1,407
- > More than 70% have a Year 10 or higher education level.
- > Full-time employed people make up 54.6% of the population, with a further 34.4% working part-time and 3.5% unemployed.
- > 10.1% of people have a bachelor's degree or higher, 26.2% have a Vocational Qualification and 43.5% of people have no qualification.
- > 14.6% of Hastings residents worked in construction, 13.7% in health care and social assistance, 11.4% in retail trade, and 9.3% in manufacturing in 2021.

1.5 Traditional Owners

The Bunurong people are the Traditional Owners of the land and waters where Port of Hasting operates. PoHC has engaged with Traditional Owners through consultation on the approach to their participation in the Terminal's planning and development.

This approach recognises Traditional Owners as rights holders to land and sea (Country) on which the project is proposed to be built and is undertaken in accordance with the Victorian Government's First Nations Self-Determination Reform Framework.

Bunurong Land Council Aboriginal Corporation (BLCAC) are the Registered Aboriginal Party (RAP) of the area and has delivered a Cultural Values Assessment (CVA) for the project. BLCAC is responsible for evaluating the Project's Cultural Heritage Management Plan.

1.6 Response to previous EPBC Referral

In 2023 a referral for the project was submitted to the Commonwealth Government to determine if formal assessment and approval is required under the *Environment Protection and Biodiversity Conservation Act 1999*. The project, as it was referred in 2023, was not given a "controlled action" and therefore could not proceed.

Since the decision on the 2023 EPBC referral, PoHC has made substantial reductions to the dredging and reclamation envelopes to directly address the issues flagged by the Commonwealth Government in their statement of reasons following the decision. PoHC has undertaken extensive ecological assessments, technical studies and design work to better understand the site and its surrounding environment and through this work.

Feedback has also been sought from Traditional Owners, stakeholders and the wider community on the substantially modified design.

2. Engagement Overview

2.1 Engagement Objectives

The communications and engagement approach for the Terminal aims to build community and stakeholder awareness, acceptance, and confidence that impacts on the Western Port environment can be adequately managed, and that the Terminal will deliver tangible local and wider benefits.

During the project planning, development and environmental assessments, PoHC's engagement objectives are to:

- > Build awareness of the proposed project in the context of the Victorian Offshore Wind commitments and policy
- > Provide an understanding of the project and environmental assessment processes (EES process / EPBC act)
- > Establish PoHC as a responsible, open, and transparent project proponent with experience managing port operations in sensitive environments.
- > Share information openly with communities and stakeholders about the Terminal project scope, how and why the Port of Hastings was identified as the preferred site, and its role in enabling offshore wind in Victoria.
- > Encourage participation and input during the project's development to identify potential issues, gain local insights and seek feedback on the Terminal project, and demonstrate how this has been considered in the project design and assessments.
- > Consult with key stakeholders and local interest groups to identify opportunities to support local community and environment initiatives through targeted benefit-sharing and environmental improvement activities.
- > Use and respond to community and stakeholder feedback and demonstrate how it has been considered through the design and development.

2.2 Government legislation, policy and guidelines

There are several Government policies, legislation and best practice guidelines that provide guidance on the need for community engagement when delivering major projects.

- > **Environment Protection and Biodiversity Conservation Act 1999** provides guidance for Traditional Owner and community engagement as part of an EPBC referral and the opportunity to provide public comment on referral and assessment documentation
- > **Environment Effects Act 1978** requires community and stakeholder engagement to be undertaken as part of the Environment Effects Statement (EES) process
- > **Victorian Government Public Engagement Framework 2021 – 2025:** See section 2.4.
- > **The Planning and Environment Act 1987** requires formal opportunities for public engagement and comment on proposals during public exhibition of planning permit applications and planning scheme amendments.
- > **Victorian Auditor-General's Office Public Participation in Government decision-making:** provides a high-level framework for the public sector to use when deciding how best to involve the public in government decision-making and implementation.
- > The Australian Energy Infrastructure Commissioner's **Community Engagement Review - Report to the Minister for Climate Change and Energy** which includes engagement recommendations for renewable energy projects.
- > Victorian Government's First Nations **Self-Determination Reform Framework** which guides our engagement activities to enable self-determination

2.3 Victorian Environmental Effect Statement (EES)

The Victorian Minister for Planning has determined that PoHC is required to prepare an Environment Effects Statement (EES) for the Victorian Renewable Energy Terminal. An EES is the most rigorous environmental impact assessment process in Victoria. The EES process is administered by the Department of Transport and Planning (DTP) on behalf of Victoria's Minister for Planning under the Environment Effects Act (1978).

The EES process is used to assess projects with potential effects on the environment. It supports transparent, rigorous and integrated consideration of potential effects that inform approval decisions. As part of the EES process, PoHC is undertaking extensive technical studies including field studies and investigations, along with consultation with the local community and Traditional Owners.

A Technical Reference Group (TRG) has also been established for the project as part of the EES. The TRG includes a range of both local and state government agencies, and PoHC will continue to seek the TRG's feedback throughout the EES. More information on the TRG can be found under Government and Agency Coordination.

There are several opportunities for public participation through the EES process, facilitated by DTP – including the exhibition of Draft Scoping Requirements (published on 19 November 2024), and exhibition of the EES, when members of the public can review the EES documents and make a submission. The EES will be exhibited through the DTP website for 20 to 30 days, and community members and stakeholders can make a submission through Engage Victoria.

After reviewing the EES documents, the Minister for Planning may determine the need for an inquiry. This may involve a formal hearing, when stakeholders or members of the public who made a submission are able to speak on the project.

PoHC will continue to engage with stakeholders and communities throughout the EES process.

The project must complete the EES process and obtain both State and Commonwealth approvals before construction can commence.

2.4 IAP2 Spectrum of Public Participation

Additionally, the project will follow international best practice standards for engagement including:

- > **IAP2 Quality Assurance Standards:** The Quality Assurance Standard has been designed to respond to market requirements for evidence that effective community and stakeholder engagement has been delivered in accordance with the standards of the professional community.
- > **IAP2 Core Values and Public Participation Spectrum:** The International Association for Public Participation (IAP2) defines public participation as the involvement of those affected by a decision in the decision-making process.

IAP2 is adopted and widely recognised among engagement professionals and will be adopted by PoHC and any supporting organisations involved in implementing the communications and engagement strategies for the Terminal.

2.5 Victorian Government Public Engagement Framework

The Victorian Government Public Engagement Framework (2021 – 2025) provides principles, a guide and measures for engagement evaluation and aims to strengthen meaningful engagement practice in Victoria.

The framework includes key principles that underpin all Victorian Government public engagement.

- > **Meaningful:** The process of Public Engagement is genuine and informs the final decision.
- > **Inclusive:** The engagement is respectful, inclusive and accessible.
- > **Transparent:** The engagement is clear and open about what the public can and cannot influence
- > **Informed:** The engagement provides relevant and timely information to the public
- > **Accountable:** The engagement is high quality and responsive to the public
- > **Valuable:** The engagement creates value for the community and government. This can include social, economic and environmental value.

2.6 Committing to engagement principles

PoHC has committed to best practice engagement and is guided by government and industry principles. The IAP2 Public Participation Spectrum is designed to assist with the identification and selection of the level of participation stakeholders and community will have at a particular time within an engagement project.

PoHC also seeks to maximise access and participation in engagement, by engaging with key communities including:

- > Culturally and Linguistically Diverse Communities (CALD),
- > Socially disadvantaged communities
- > Other vulnerabilities, and
- > Engaging young people.

During and leading up to the exhibition of draft scoping, PoHC has engaged with stakeholder groups that are likely to submit during the public comment period. Engagement has been based on a "Consult-Involve" level of public participation as per the IAP2 methods of engagement.

Similarly, during the preparation and public exhibition of the EES, as well as public review of the EES, the project will seek to engage at an "Inform/Consult/Involve" level with relevant stakeholder groups, through methods outlined later in the Consultation Plan.

2.7 Phased engagement approach and plan

PoHC has been engaging and raising awareness about the project since October 2022. Table 2 provides an overview of the engagement phases throughout the Victorian Renewable Energy Terminal project. These engagement phases have been designed to both align with and inform key project design and assessment activities and milestones. Table 3 outlines the engagement objectives and activities aligned with each phase.

Table 2 Engagement phased

Phase of Engagement	2023				2024				2025				2026				2027							
	Q1	Q2	Q3	Q4	Q1	Q2	Q3	Q4	Q1	Q2	Q3	Q4	Q1	Q2	Q3	Q4	Q1	Q2	Q3	Q4				
Early engagement	Active																							
Project introduction (including scoping requirements for EES)									Active															
EES Preparation									Active															
Public exhibition of EES and inquiry hearing													Active											
Minister's assessments																	Active							
Construction commences (pending approvals)																	Active							

Table 3 Engagement phases and plan - objectives and activities

Project phase	Early engagement	Project introduction including scoping requirements	EES Preparation	Public exhibition and inquiry hearing	Minister's assessments	Construction
Engagement objectives	<ul style="list-style-type: none"> • Introduce project to the local community and project stakeholders • Raise awareness of renewable energy transition and the Port of Hastings Corporation role • Establish dedicated communication channels • Inform community on approvals process and opportunities to get involved • 	<ul style="list-style-type: none"> • Raising awareness of and seeking feedback on the project • Identify areas and topics of importance to community and stakeholders • Support and promote DTP public exhibition of draft scoping requirements and ensure stakeholders and community are aware of the opportunity to respond to the EES Scoping Requirements • Communicate the release of final Scoping Requirements 	<ul style="list-style-type: none"> • Share initial outcomes of technical studies, including existing conditions, potential impacts and alternatives that have been considered • Continue to build community and stakeholder understanding of the project and EES process • Seek feedback on the project and build understanding of which parts of the project are able to be influenced through engagement • Close the loop through a consultation report on what we heard during project introduction consultation and how this feedback is being considered in the technical studies • Provide overview on next steps, including what is involved in EES Exhibition and how to make a submission 	<ul style="list-style-type: none"> • Encourage participation in the EES process and detailing how community members and stakeholders can make a submission • Provide opportunities to connect people with project information • Provide information about next steps in the approvals process 	<ul style="list-style-type: none"> • To report back on outcomes of Minister's Assessment and the next steps for the project 	<ul style="list-style-type: none"> • <i>Engagement objectives and activities pending approval</i>
Engagement activities	<ul style="list-style-type: none"> • Introductory briefings with community • Set-up dedicated e-news mailing list • Development and refinement of Consultation Plan • Attend local markets to raise awareness of project • Attend/host Consultative Community Committee meeting • Develop introductory project collateral including fact sheets, maps, flyers • Developed a 2D Animation to describe project and Victoria's offshore wind sector 	<ul style="list-style-type: none"> • Host online webinars to discuss project overview, explain EES process • Meet with local community and environment groups and other key stakeholders • Promote project Draft Scoping Requirements at briefings • Website updates, respond to community enquiries • Milestone communication via e-update • Printed communication materials including factsheets and flyers • Online information sessions/webinars – briefing on concept layout and opportunities for feedback • Attend/host Consultative Community Committee g (focused on concept layout) • Attend/host Community Reference Group (CRG) meeting 	<ul style="list-style-type: none"> • Proactive media on project milestone and timing of next steps for the project and approvals process • Meet with local community and environment groups and other key stakeholders to share update on technical studies, introduce concept layout and seek feedback • Digital communications to promote outcomes of project development consultation (e-update, website, social media), • Printed communication materials including factsheets and flyers • Information sessions to seek feedback on the concept layout • Attend/host Consultative Community Committee meetings, and Community Reference Group (CRG) meetings • Continue to respond to community enquiries • Milestone communication via e-update • Engagement Reports (inc. how community feedback has been considered to date) • Doorknocks 	<ul style="list-style-type: none"> • Project update and promotion of EES exhibition • Proactive media to promote Project EES exhibition • Drop-in information sessions to support EES exhibition • Digital communications (e-update, website updates and social media) to promote exhibition of the EES and how to make a submission. • Milestone communication via e-update • Printed communication materials including factsheets and flyers based on topics of community interest 	<ul style="list-style-type: none"> • Proactive media to promote outcomes of EES and next approval steps, including how approval requirements will inform the project's construction and operation • Digital communications (e-update, website and social media) to share outcomes of the state Minister's assessment and next steps for the project • 	<ul style="list-style-type: none"> • <i>Engagement objectives and activities pending approval</i>

Project phase	Early engagement	Project introduction including scoping requirements	EES Preparation	Public exhibition and inquiry hearing	Minister's assessments	Construction
Opportunities to provide feedback	<ul style="list-style-type: none"> • Opportunities for local community groups to receive an introductory project briefing or project updates • Feedback to PoHC team via in-person/digital engagement channels • Subscribe to e-news • Provide feedback via community enquiries channels (phone/email) 	<ul style="list-style-type: none"> • Speak with the project team and technical experts at community information sessions. • Live Q&A at online webinar • Opportunities for local community groups to receive project briefing and updates • Attend targeted briefings/meetings with project team members at PoHC offices or project site • Draft scoping exhibition when community can provide feedback to DTP through Engage Victoria • Subscribe to e-news • Project contact number and email • Access information on PoHC website • 	<ul style="list-style-type: none"> • Opportunities for local community groups to receive an introductory project briefing or project updates • Speak with the project team and technical experts at markets and pop-up events • Attend targeted briefings/meetings with project team members at PoHC offices or project site • Subscribe to e-news • Subscribe to the project newsletter to receive project updates • Project contact number and email • Provide feedback to the project team via engagement channels digital, face-to-face, print) • Submit survey feedback • 	<ul style="list-style-type: none"> • Community information session(s) • Submit a formal submission via Engage Victoria platform • Speak with the project team at markets and pop-up events • Opportunity to participate in the EES inquiry hearing process • 	<ul style="list-style-type: none"> • PoHC will provide updates about key steps and dates 	<ul style="list-style-type: none"> • <i>Engagement objectives and activities pending approval .</i>

3. Engagement and feedback to date

PoHC has been engaging with communities and stakeholders about the Terminal since 2022 to inform planning and development of the project. Seeking feedback is an important part of project development, to ensure technical work being done captures local aspirations and interests where possible.

3.1 Engagement methods

Initial engagement has occurred through the following activities:

- > Project briefings with community groups, project stakeholders and government agencies
- > Community information sessions (in person)
- > Webinar (online)
- > Dedicated project website (<https://renewableenergyterminal.com.au/>)
- > Social media (LinkedIn and Facebook)
- > Project updates via digital mailing list
- > Site tours with stakeholders
- > Attending community pop-ups at Red Hill Market and Hastings High Street market
- > Doorknocks to nearby residential properties for investigation works
- > Attending keynote presentations at project conferences
- > Developing and distributing introductory project fact sheets and other collateral.
- > Update briefings through the PoHC Consultative Community Committee

3.2 Engagement snapshot

Table 4 provides an overview of engagement activities undertaken to date, to build broad awareness of the project, inform stakeholders and communities and seek feedback from stakeholders and community members:

Table 4 Engagement snapshot

	Aware	Inform	Engage
From October 2022, the project team has:	<ul style="list-style-type: none"> • Built a stakeholder database containing 300+ organisations and 550+ unique stakeholders • Built an e-news subscriber database of 600+ stakeholders • Developed a high-level 2D animation to contextualise offshore wind and project • Launched a dedicated Victorian Renewable energy Terminal website (6,882 page views) 	<ul style="list-style-type: none"> • Developed project collateral (Fact sheets, e-news updates, social media posts) • Distributed letterbox drops to properties in Cemetery Estate (residents <500m from OTRA site) • Provided project updates via website and social media 	<ul style="list-style-type: none"> • Hosted over 200 briefings with stakeholders • Responded to 1500+ stakeholder enquiries via phone calls / email • Hosted the ongoing PoHC Consultative Community Committee • Hosted community technical workshops with local environment / scientific community experts • Spoken with 550+ local stakeholders across 9 local markets
Since the 2023 EPBC referral decision, the project team has:	<ul style="list-style-type: none"> • Published advertisements in local papers promoting the release of the draft scoping requirements • Promoted expressions of interest for dedicated Community Reference Group (CRG) • 2,008 media mentions across (TV, Print, radio online and other) 	<ul style="list-style-type: none"> • Had 500+ conversations when exhibiting over two days at the Australia Wind Energy 2024 • Introduced the revised project design at two community drop-in sessions with 80 attendees in Hastings • Hosted an online webinar and live Q&A with 79 attendees • Distributed 4 e-news notifications to provide key updates relating to project 	<ul style="list-style-type: none"> • Formed a dedicated project Community Reference Group (December 2024) • Received 15 submissions to our Port Development Strategy survey that related to the Terminal • Engaged with key project stakeholders through briefings, phone calls and emails • Several tours to the OTRA site

3.3 Summary of project stakeholder engagement

Since October 2022, PoHC has engaged with stakeholders, initially to raise project awareness and establish relationships with a wide range of interest groups and communities. Stakeholder engagement has aimed to ensure stakeholders are given the opportunity to engage formally through planning and approvals processes, as well as directly with the proponent to inform the planning and delivery of the Victorian Renewable Energy Terminal.

Stakeholder groups have included:

1. Traditional Owners
2. Environment and conservation groups
3. Community and recreation groups
4. Local partnerships and educational/scientific bodies
5. Local, State and Commonwealth Government, including relevant agencies and authorities
6. Commercial port users
7. Business, industry and tourism
8. Offshore wind proponents
9. Water authorities

3.3.1 Traditional Owners

In 2023, PoHC engaged BLCAC to prepare a Cultural Values Assessment (CVA) to provide recommendations on how the project could consider traditional owner engagement and activities of importance to Traditional Owners. The CVA was prepared for PoHC and specifically focused on the Victorian Renewable Energy Terminal project.

In partnership with BLCAC, the project has undertaken the following Traditional Owner engagement activities:

- > Tree tagging exercise and subsequent digital map of project site noting flora of cultural significance to inform project design considerations, including alignment of access road and minimise vegetation clearing where practicable.
- > Commission a Bunurong artist to prepare an artwork representing the local Indigenous environment of Western Port.
- > Organised cultural awareness training for all PoHC staff and key EES consultants
- > Developing a proactive strategic policy document for the protection of coastal Aboriginal cultural heritage
- > Site tours of Old Tyabb Reclamation Area (OTRA) with BLCAC.
- > Welcome to country and smoking ceremony at staff events (e.g. Citizen Science Day)

The project team has also met with Bunurong to provide project updates and sought feedback and input on activities relating to traditional owner engagement and the cultural values assessment.

3.3.2 Government and agency coordination

As the Terminal is a key component of the Victorian Government's overall approach to delivering on offshore wind targets, it will be important for the project team to stay well-coordinated with relevant Victorian and Commonwealth Government agencies including:

- > First People's Self-Determination Division
- > Impact Assessment Unit
- > Forest, Fire and Regions
- > Department of Climate Change, Energy, the Environment and Water (DCCEEW)
- > Parks Victoria
- > Department of Treasury and Finance (DTF)

A range of both local and state government agencies are engaged through the Technical Reference Group (TRG), established as part of the EES process. We have leveraged this forum to engage with key government stakeholders, including engaging on the updated project design, and will continue to seek the TRG's feedback throughout the EES. We have also held a series of focused workshops over the course of 2023 and 2024.

The TRG members include:

- > Bunurong Land Council Aboriginal Corporation
- > Department of Energy, Environment and Climate Action (DEECA)
- > Department of Premier and Cabinet (DPC) – First Peoples – State Relations
- > Department of Transport and Planning (DTP)
- > Environment Protection Authority (EPA)
- > Freight Victoria
- > Heritage Victoria
- > Melbourne Water
- > Mornington Peninsula Shire Council
- > Offshore Wind Energy Victoria

- > Ports Victoria
- > Safe Transport Victoria
- > Victorian Fisheries Authority

Areas of interest for government agencies consulted have included the planning and approvals process and ensuring the project meets relevant requirements, ensuring best outcomes for the environment and community consultation activities planned by PoHC.

3.3.3 Environmental and conservation groups

PoHC has recognised the importance of engaging transparently and frequently with local environment, conservation and action groups on the Victorian Renewable Energy Terminal.

The primary topics of interest have been the potential environmental impacts of construction (dredging and reclamation) and operation, and how the project may impact the local and broader Western Port environment and ecosystems (including fauna, flora and water).

Following the 2023 EPBC referral decision, PoHC has provided regular updates and sought to share project updates directly with local environmental and conservation groups to provide updates through their networks.

Local environmental and conservation groups will continue to be engaged through the EES process, and through regular briefings. Several groups have nominated to participate in the project's community reference group, which is scheduled to start meeting in 2025.

3.3.4 Consultative Community Committee

The Port of Hastings Corporation (PoHC) holds bi-annual meetings with a Consultative Community Committee (CCC) comprising of local representatives with an interest in port operations and development. Since 2023, these meetings have included regular updates and discussions on the Victorian Renewable Energy Terminal, with time during the meetings allocated to Q&A sessions that primarily focused on the project. PoHC has used feedback from the CCC to shape engagement activities.

The CCC includes the following stakeholders:

- > Save Westernport
- > Westernport and Peninsula Protection Council
- > Phillip Island Conservation Society
- > Crib Point Action Group
- > Ports Victoria
- > French Island Community Association
- > Western Port Protection Society
- > Phillip Island Conservation Society
- > Esso
- > United
- > Western Port Ferries
- > BlueScope Steel
- > HMAS Cerberus
- > Parks Victoria
- > Western Port Biosphere Foundation
- > Yaringa Harbour

3.4 Feedback summary

PoHC have recorded over 500 interactions that have occurred at information sessions, webinar(s), briefings, local markets, emails, and phone calls. This Feedback has been grouped under 5 key themes and broken down into more specific topics in Table 5. Assessment and approvals, environmental and construction impacts are the most common themes of interest

Table 5 Feedback summary

Theme	Topic	What we've heard to date
Assessment and approvals	Project approvals and how Federal and State assessment processes work together	<ul style="list-style-type: none"> • Questions about EPBC and EES process and timeframes, including what a new EPBC referral would entail • Questions about why the EES recommenced following the EPBC decision and how the two approvals processes relate to each other • Questions about whether a new EPBC referral is required for the project
	Whether the project will be approved following the EPBC decision	<ul style="list-style-type: none"> • Concerns about whether or not the project will be approved following the decision in January 2024 • Scepticism of project approval based on previous proposed developments at the Port of Hastings • Concerns on the future of Port of Hastings operations if the project does not go ahead
Project need and benefits	Opportunities for local jobs and industry skills development for Port of Hastings	<ul style="list-style-type: none"> • Questions about what jobs will be created through the Terminal and wider offshore wind industry, and positive interest in these • Desire to see local and ongoing jobs created through construction and operations of the Terminal • Interest from industry in supporting Terminal design and investing in POHC infrastructure
	Questions regarding the site selection	<ul style="list-style-type: none"> • Questions about why the OTRA site is best placed to host the Terminal and the site selection process • Suitability of Port of Hastings compared to other existing ports within Victoria.
	How the Port will support the rollout of the offshore wind industry in Victoria	<ul style="list-style-type: none"> • Questions about how the rollout of offshore wind is happening – key milestones, timelines and how the Terminal will support the construction of turbines • Questions from OSW proponents about ensuring the design of the Terminal has enough space for assembly of components • Expression of wanting to see offshore wind built more quickly, and general support for the industry
Environmental	Environmental impacts from dredging and reclamation	<ul style="list-style-type: none"> • Concerns about environmental impacts of dredging and reclamation and desire to see the amount of dredging minimised • Questions about the need for the turning circle and size of the vessels to be used, and the impacts this will have on dredging and the marine environment
	Impacts to flora and fauna at project site and broader Western Port Bay ecosystem	<ul style="list-style-type: none"> • General interest and concerns about potential impacts to the environment, particularly on birds and other fauna • Desire to see specific flora and fauna protected through construction and operations including seahorses, whales, shorebirds, fish, seals and seagrasses • Questions about surveys and environmental monitoring work being completed by PoHC
	Concerns over impacts to Ramsar / UNESCO Biosphere from construction / operation of port infrastructure	<ul style="list-style-type: none"> • Specific questions relating to the Ramsar area and UNESCO Biosphere, requirements under these and potential impacts the project could have in these areas • Desire to see any potential environmental impacts of the project minimised
Operations	Additional vessel movements in a Ramsar wetland	<ul style="list-style-type: none"> • Questions about the number of additional ships expected to come through Western Port once the Terminal is operational and any potential impacts this may have on the marine environment

Theme	Topic	What we've heard to date
	Aviation impacts/safety from the height of pre-assembled towers at the Terminal	<ul style="list-style-type: none"> Concerns about impacts of towers on flight operations, notably changes to flight paths and height restrictions, turbulence, air ambulance helicopter and emergency services access, and local air shows Concerns about shifting flight paths above residential areas
	Visual impacts from height of pre-assembled towers at the Terminal	<ul style="list-style-type: none"> Concerns about how visible turbine towers will be from surrounding residential areas
	Impacts to recreation activities	<ul style="list-style-type: none"> Concerns about impacts to recreational boating and safety in the port with additional buoys and ship movements
Construction	Traffic and amenity impacts of construction and operation of the Terminal (noise, light, dust)	<ul style="list-style-type: none"> Questions regarding the project's impact on road traffic, as well as whether there will be any changes to road infrastructure as a result of the project Desire to see impacts to current traffic and shipping minimised Concerns about vibration and noise during construction on nearby communities
	Environmental impacts the construction of the Terminal	<ul style="list-style-type: none"> Concerns around siltation during the dredging and reclamation activities

3.5 How feedback will inform the project

PoHC has collected, recorded and considered feedback received throughout engagement since project engagement commenced in 2022. This feedback has been used to inform the modified project design and will continue to influence the assessment process going forward.

Consultation helps build understanding around the issues and implications of projects and enables stakeholders' knowledge and views to be considered in project planning and assessment and formal decision-making.

In response to feedback received to date, the project design has been modified, resulting in significant project changes, including a reduction in the dredging and reclamation footprint and the decision to proceed with the Twin Wall design. These changes reflect stakeholder concerns about the important values of Western Port and the need to minimise construction and dredging impacts. Feedback has also guided the scope of assessment field studies, such as waterbird tracking and lighting assessments.

Ongoing feedback gathered through the EES process will continue to shape the project and key aspects of the project development that will be informed by community and stakeholder feedback include:

- > Stakeholder and community knowledge of the area and issues of importance,
- > Priorities for technical assessments to ensure all relevant impacts are assessed, and
- > Potential impacts and suggested mitigations.

PoHC will collect, record, and consider all feedback received throughout the consultation and demonstrate how it has been considered in the development of the Environment Effects Statement. A number of steps are involved in this process as follows:

- > Collecting Feedback – PoHC will consult with the community and key stakeholders to identify issues and feedback on the project.
- > Recording Issues – PoHC will use Consultation Manager (software) to input feedback received from the Community engagement. Technical issues and concerns can be noted through this software and provided to technical specialists for consideration.
- > Analysing issues – Technical issues or concerns will be analysed by the Terminal specialists for consideration. Further technical assessment may be required to address issues raised.
- > Informing the Project Design and assessment - Where community feedback identifies gaps and issues, the project design may be revised, or mitigation measures included to address issues raised by the community.

- > Responding to Stakeholders – PoHC will respond to the community feedback on how their issues have been analysed and how they have informed the project development.

During the Public Exhibition of the EES, the community and stakeholders will have an opportunity to make a submission on the EES and be heard by the Inquiry and Advisory Committee appointed to examine the project's potential environmental effects. The Inquiry and Advisory Committee will consider submissions received in developing its recommendation to the Minister for Planning on the project's assessment and approvals.

3.5.1 Project Community Reference Group (CRG)

A dedicated Community Reference Group (CRG) has been established for the project.

The CRG has been formed to provide effective forum for information-sharing between PoHC and the local community. The CRG terms of reference will be made available on the PoHC website.

The objectives of the CRG are to:

- > Enable two way conversations between PoHC and the community, including through the dissemination of information from PoHC to local communities;
- > Provide a local perspective on the Terminal project, inform PoHC of local conditions and priorities and, where possible, assist with resolving any community concerns as they arise;
- > Encourage a broad range of community and local business representatives to participate in consultation processes of the Terminal project; and
- > Provide a forum to discuss, manage and, where possible, mitigate and minimise any local impacts associated with the Terminal.
- > The CRG includes representation from a cross-section of the community, including local scientific, conservation and advocacy groups, as well as local residents interested in the project.
- > In October 2024, PoHC sought expressions of interest from interested participants, and in December 2024 formed the CRG.
- > The CRG will host its first meeting in Q1 2025 and meet quarterly.

The following stakeholders are on the CRG:

- > UNESCO Western Port Biosphere Foundation
- > Dolphin Research Institute
- > Destination Phillip Island Regional Tourism
- > Committee for Frankston and Mornington Peninsula
- > Somerville Business Group
- > Rotary Club of Somerville Tyabb
- > Save Westernport
- > Westernport and Peninsula Protection Council
- > Western Port Seagrass Partnership
- > Phillip Island Conservation Society
- > Preserve Western Port Action Group
- > Victorian National Parks Association
- > Wellbeing and Health Organisation (Australia)
- > Mornington Peninsula Labor Environment Action Network
- > Local residents (non-affiliated).

4. Stakeholder matrix

4.1 Government (Elected)

Interests:

- > Understanding project rationale and benefits
- > Impacts and sentiment of constituents
- > Community consultation process.

IAP2 Level of Engagement:

- > Consult

Stakeholders (State and local):

- > Minister for Environment, Energy & Climate Action
- > Minister for Planning
- > Minister for Regional Development
- > Minister for Ports and Freight
- > Treasurer of Victoria
- > State Member for Hastings
- > State Member for Bass
- > Mornington Peninsula Shire
- > Bass Coast Shire Council
- > City of Casey
- > Cardinia Shire
- > City of Greater Dandenong
- > Latrobe City Council Mayor and Councillors

Stakeholders (Federal):

- > Federal Member for Flinders
- > Federal Member for Monash
- > Minister for the Environment
- > Minister for Climate Change and Energy

4.2 Government agencies and authorities - State

Interests:

- > Planning process complies with applicable legislation and requirements
- > Involvement in project development and assessment
- > Optimal outcomes for environment and community
- > Preparation of EES and conformance with EES Scoping Requirements
- > Broader regulatory requirements
- > Community and stakeholder consultation

IAP2 Level of Engagement:

- > Collaborate

Stakeholders:

- > Department of Energy, Environment and Climate Action
- > Department of Transport and Planning
- > Department of Jobs, Precincts and Regions
- > Department of Premier and Cabinet | First Peoples - State Relations
- > Environment Protection Authority
- > Better Boating Victoria
- > Country Fire Authority
- > Southern Rural Water
- > Safe Transport Victoria
- > Ports Victoria
- > Parks Victoria
- > VicRoads
- > Victorian Fisheries Authority
- > First Peoples State Relations
- > Heritage Victoria
- > Freight Victoria
- > Victorian Regional Channels Authority

4.3 Government agencies and authorities - Federal

Interests:

- > Planning process complies with applicable legislation and requirements
- > Involvement in project development and assessment
- > Optimal outcomes for environment and community
- > Preparation of EES and conformance with EES Scoping Requirements
- > Broader regulatory requirements Community and stakeholder consultation

IAP2 Level of Engagement:

- > Collaborate

Stakeholders:

- > Department of Climate Change, Energy, Environment and Water
- > Department of Home Affairs (Maritime Infrastructure and Security)
- > Department of Infrastructure and Regional Development
- > Department of Primary Industries
- > Royal Australian Navy (HMAS Cerberus)
- > Department of Defence
- > Australian Maritime Safety Authority (AMSA)
- > Civil Aviation Safety Authority (CASA)
- > CSIRO

4.4 Traditional Owners

Interests:

- > Understanding cultural values in Port of Hastings and surrounds
- > Understanding project rationale and benefits
- > Understanding and avoiding/ minimising potential adverse impacts
- > Opportunities to provide input into project planning, delivery and land use
- > Minimising impacts to Native Title Land
- > Development and implementation of Cultural Heritage Management Plan
- > Optimal outcomes for the Country including natural environment and protected places
- > Opportunities for Traditional Owner business and employment

IAP2 Level of Engagement:

- > Collaborate

Stakeholders:

- > Bunurong Land Council Aboriginal Corporation
- > Boon Wurrung Foundation

4.5 Local government

Interests:

- > Understanding project rationale and benefits
- > Understanding and avoiding/minimising adverse impacts on council land and assets, the local environment and businesses
- > Maximising local benefits from the project
- > Understanding impacts of the proposed built form and use on the local environment
- > Opportunities to provide input to project planning and delivery
- > Economic opportunities for local government
- > Community consultation process

IAP2 Level of Engagement:

- > Involve

Stakeholders:

- > Mornington Peninsula Shire
- > Bass Coast Shire Council
- > City of Casey
- > Cardinia Shire
- > City of Greater Dandenong
- > Latrobe City Council
- > French Island Community Association (FICA)

4.6 Commercial entities

Interests:

- > Understanding project rational and benefits
- > Understanding potential impacts from project in the local area
- > Ability to provide local knowledge about existing operations to enhance the project and delivery

IAP2 Level of Engagement:

- > Consult

Stakeholders:

- > BlueScope Steel
- > Esso
- > WP Ferries
- > United Petroleum

4.7 Business and tourism

Interests:

- > Understanding project rational and benefits
- > Understanding potential impacts from project in the local area
- > Ability to provide local knowledge about existing operations to enhance the project and delivery
- > Opportunities to provide input to the project
- > Clear information and updates about the project
- > Maximising local benefits from the project
- > Opportunities for local business and employment

IAP2 Level of Engagement:

- > Involve

Stakeholders:

- > Western Port Chamber of Commerce and Industry
- > Victorian Chamber of Commerce
- > Committee for Frankston and Mornington Peninsula
- > Committee for Gippsland
- > Local Port Services and Transport
- > Phillip Island Nature Park
- > Destination Phillip Island Regional Tourism
- > Somerville Business Group
- > Local residents and businesses

4.8 Offshore Wind proponents

Interests:

- > How the project may facilitate offshore wind projects and operations in Victoria and around Australia
- > Progress of project
- > Project design and development
- > Champion project through EES process

IAP2 Level of Engagement:

- > Consult

Stakeholders:

- > Victorian and Federal Offshore Wind projects and developers

4.9 Emergency services

Interests:

- > Understanding project rationale and benefits
- > Impacts to services and operation during project duration
- > Public safety
- > Compliance and conformance with relevant legislation

IAP2 Level of Engagement:

- > Consult

Stakeholders:

- > Fire Rescue Victoria
- > Ambulance Victoria
- > Victoria Police
- > Emergency Management Victoria

4.10 Water authorities

Interests:

- > Understanding project rationale and benefits
- > Impacts to services and operation during project duration
- > Involvement in decisions which may affect land, water, licence and/or assets
- > Minimising impacts on land, water, licence and/or assets

IAP2 Level of Engagement:

- > Involve

Stakeholders:

- > South East Water
- > Melbourne Water

4.11 Environment, community and recreation groups

Interests:

- > Understanding project rationale and benefits
- > Understanding potential impacts from project
- > Ability to provide local knowledge to enhance the project and delivery and to help avoid/minimise impacts
- > Opportunities to provide input to the project
- > Clear information and updates about the project
- > Maximising local benefits from the project
- > Optimal outcomes for the environment
- > Community safety and amenity

IAP2 Level of Engagement:

- Consult

Stakeholders:

- > Western Port Biosphere Reserve Foundation
- > Australian Conservation Foundation (Mornington Peninsula)
- > Bass Coast Landcare Network
- > Birdlife Australia Mornington Peninsula
- > Energy Justice Victoria
- > Flinders Coastal Advisory Group
- > Friends of French Island National Park
- > Hastings Yacht Club
- > Mornington Environment Association
- > Mornington Peninsula Climate Action Network
- > Mornington Peninsula Landcare Network
- > Nepean Conservation Group
- > Port Phillip and Western Port Protection Council
- > Preserve Western Port Action Group
- > Dolphin Research Institute
- > Mornington Peninsula Foundation
- > Phillip Island Conservation Society (PICS)
- > Preserve Western Port Action Group
- > Save Westernport

- > The Southern Peninsula Indigenous Flora and Fauna Association
- > Western Port Biosphere Foundation
- > Western Port Seagrass Partnership
- > Prom Country Climate Action
- > Australian Wildlife Society
- > Green Wedge Coalition
- > Environment Victoria
- > Greenpeace
- > Mangrove Recovery Group
- > Silverleaves Conservation Association
- > Victorian National Parks Association
- > Victorian Recreational Fishing Peak Body (VRFish)
- > Sea Shepherd
- > Victorian National Parks Association
- > Victorian Wader Study Group
- > Western Port Action Group
- > Western Port Angling Club
- > Westernport Oberon Associations
- > Westernport Swamp Landscape Group
- > Western Port Protection Council
- > Westernport and Peninsula Protection Council Inc
- > Wildlife Coast Cruises
- > Westernport Marine Alliance
- > Wild About Western Port
- > Western Port Marina
- > Mornington Peninsula Labor Environment Action Network
- > Mornington Peninsula Ratepayer and Residents Association
- > Crib Point Stony Point Committee of Management
- > Somers Residents Association
- > Friends of Flinders Foreshore
- > Crib Point Community House
- > Cerberus Community Hub
- > Crib Point Action Group
- > Wellbeing and Health Organisation (Australia)
- > Mornington Peninsula Labor Environment Action Network
- > Crib Point Advisory Group
- > Flinders Community Association
- > Mornington Peninsula Marine Alliance
- > Surfrider Foundation Mornington Peninsula Branch
- > French Island Community Association
- > Victorian Maritime Centre / Western port Oberon Association
- > Peninsula Ship Society Inc
- > Corinella Boating and Fishing Club
- > Snapper Point Angling Club
- > Western Port Angling Club
- > Marine Life Network
- > Pt Leo Boat Club
- > Cowes Yacht Club
- > Western Port Mariners Club
- > Hastings and Western Port Yacht Clubs
- > Victorian Sea Kayak Club
- > Peninsula Aero Club (Tyabb Airfield)
- > Cerberus Golf Club
- > Rotary Club of Somerville Tyabb

4.12 Media

Interests:

- Clear information and updates about the project
- Involvement in key milestone media opportunities

IAP2 Level of Engagement:

- Inform

Stakeholders:

- Mornington Peninsula News Group (covers five local papers)
- Phillip Island and San Remo Advertiser
- Relevant industry media (e.g. Daily Cargo News)
- 3RPPFM

4.13 Local partnership/Education

Interests:

- Understanding project rationale and benefits
- Understanding opportunities for local partnership
- Ability to provide local knowledge to enhance the project and delivery and to help avoid/minimise impacts
- Opportunities to provide input to the project
- Clear information and updates about the project
- Maximising local benefits from the project
- Optimal outcomes for local business and education
- Future job opportunities

IAP2 Level of Engagement:

- Consult / Involve

Stakeholders:

- Monash University
- Local high schools and primary schools
- Chisholm TAFE
- Mornington Peninsula Campus
- Southern Peninsula Trade Training Centre
- Students in Renewable Energy (SiRE) Melbourne
- Others as determined