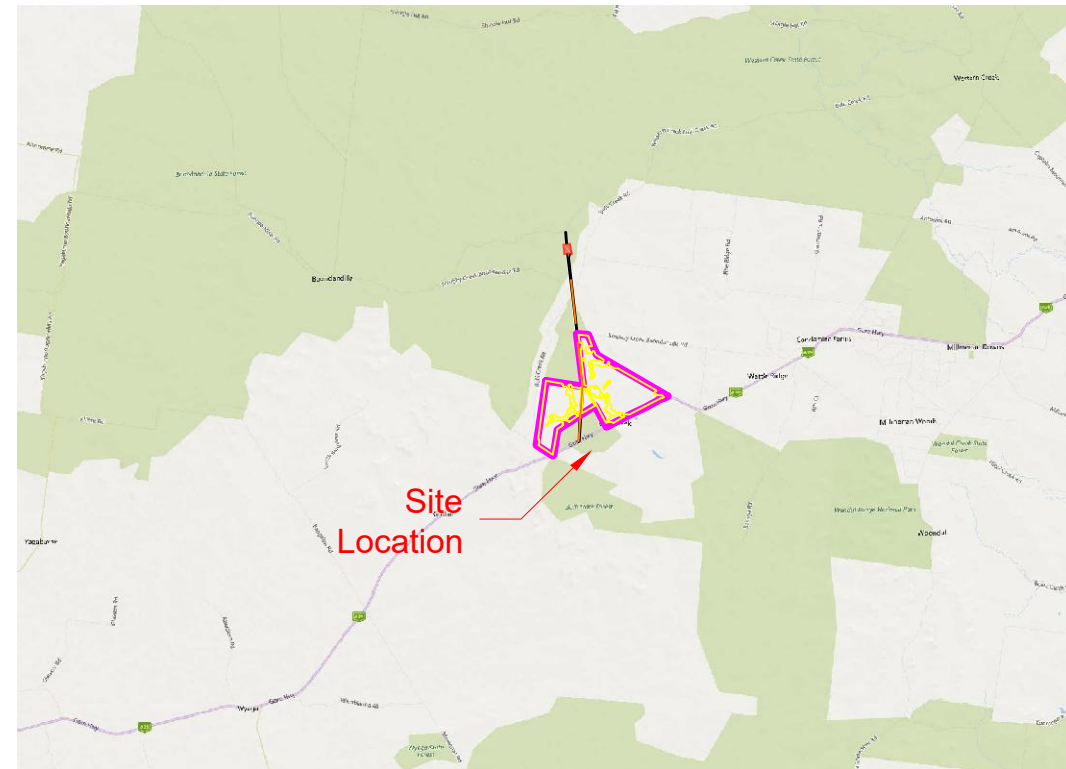




Country Map

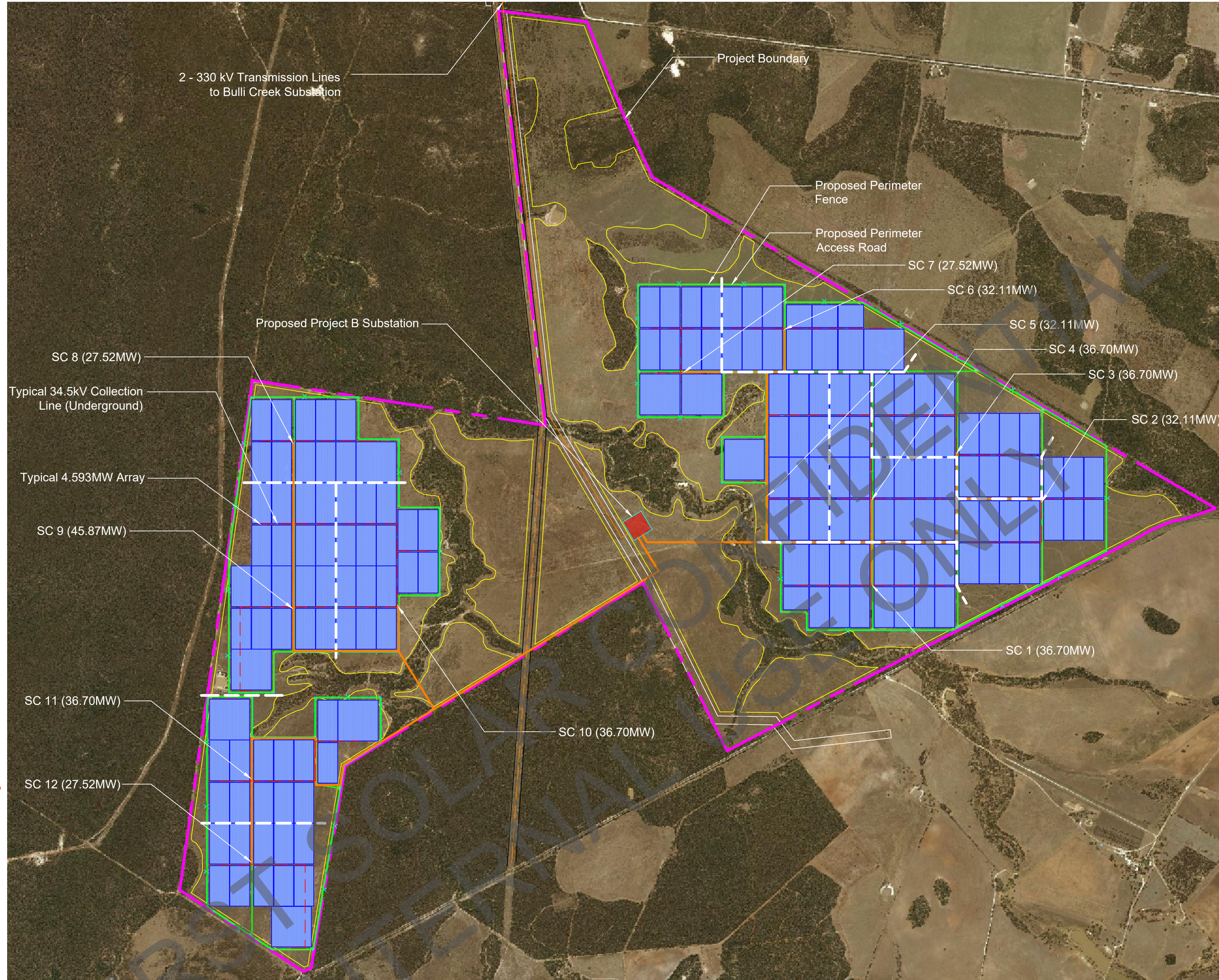
Scale NTS



Key Plan

Scale NTS

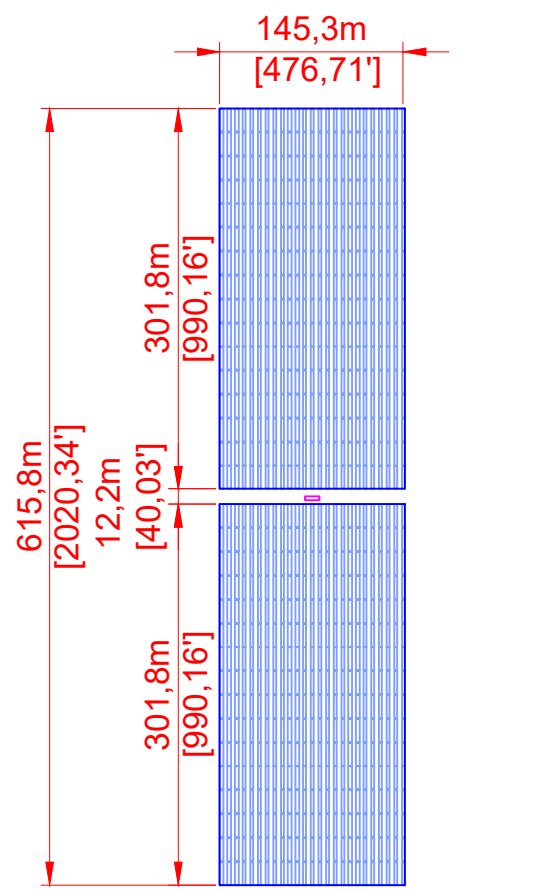
- Legend:**
- Project Boundary
 - AC Elec. Collection Line (Underground)
 - AC Elec. Collection Line (Overhead)
 - AC Elec. Distribution / Transmission Line
 - Existing Distribution / Transmission Line
 - Usable Area
 - x Perimeter Fence
 - Proposed Access Road (Dirt)



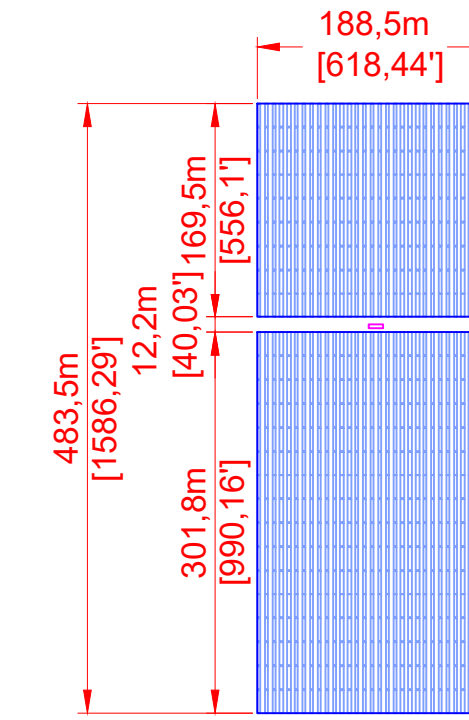
Site Development Plan

Scale 1:20,000

SC	Module	Row Spacing	kWdc / Table	# of Tables / Array	4.587 MWac Array	Sub Total of Tables	MWac	MWdc	dc/ac Ratio
1	120.0	6.00m	7.20	800	8	5600	36.70	46.08	1.2557
2	120.0	6.00m	7.20	800	7	5600	32.11	40.32	1.2557
3	120.0	6.00m	7.20	800	8	6400	36.70	46.08	1.2557
4	120.0	6.00m	7.20	800	8	6400	36.70	46.08	1.2557
5	120.0	6.00m	7.20	800	7	6400	32.11	40.32	1.2557
6	120.0	6.00m	7.20	800	7	6400	32.11	40.32	1.2557
7	120.0	6.00m	7.20	800	6	6400	27.52	34.56	1.2557
8	120.0	6.00m	7.20	800	6	5600	27.52	34.56	1.2557
9	120.0	6.00m	7.20	800	10	6400	45.87	57.60	1.2557
10	120.0	6.00m	7.20	800	8	6400	36.70	46.08	1.2557
11	120.0	6.00m	7.20	800	8	7200	36.70	46.08	1.2557
12	120.0	6.00m	7.20	800	6	7200	27.52	34.56	1.2557
Project B Total Capacity					89	76000	408.24	512.64	1.2557



Typical 4.587 MWac Tracker Array
5760.0 kWdc / 4.587 MWac
1.2557 dc/ac Ratio
230.4 kWdc / Column
25 Columns, 6.00 m RS (~19'-8")
120 Watt Module - Series 4
15 Modules Per String
32 Tables/ Column @ 4 x 15
800 Tables/ Array @ 7.20 kWdc/Table



Typical 4.587 MWac Tracker Array
5760.0 kWdc / 4.587 MWac
1.2557 dc/ac Ratio
180.0 kWdc / Column
32 Columns, 6.00 m RS (~19'-8")
120 Watt Module - Series 4
15 Modules Per String
25 Tables/ Column @ 4 x 15
800 Tables/ Array @ 7.20 kWdc/Table

Bulli Creek Solar Farm Project B

Millmerran, Derby, Queensland

Product Offering

EPCM

Project Developer/Owner Operator

First Solar

Project Site Description

1971.50 ± Hectare Site
796.33 ± Hectare Array
Latitude 28.010022° S
Longitude 150.890645° E
Elevation 335.0 m min - 365.0 m max
(1100 ft. min 1200 ft. max)

Project Climatic Conditions

ASHRAE Station No. 945520
Extreme Max (50 year) Temp 41.70 °C
Extreme Min (50 year) Temp -7.60 °C
Annual Cooling Design Temp 34.90 °C
Annual Heating Design Temp -2.1 °C (ASHRAE 2013)

Project Design Data

Snow Load 0 kN/m²
Wind Load 39 m/sec
Seismic Load TBD

Project Interconnection

2 - 330 kV Transmission Lines to Bulli Creek Substation

Photovoltaic System Parameters

408.24 - MWac System Capacity (Nominal Output)
512.64 - MWdc System Capacity (Nominal Output)
267 - 1529 kW / 1529 kVA Inverters (1500 Vdc x 630 Vac)
Inverter Model - Ingteam 1640 TL
89 - 5.0 MVA Transformers (630 V x 34.5 kV)
12 - 34.5 kV Sectionalizing Cabinets
1 - 34.5 kV x 330 kV Transformers

Solar Production

Tracker Mounting System
0° Azimuth
1500 Volt dc PV System Design
34.5 kV Collection System
330 kV Dist. or Trans. System

Array	Types	Qty
Standard	2	89
Sub-Array		
Custom		



Bulli Creek Solar Farm
Millmerran
Derby
Queensland, Australia
1200MWac Net Capacity

REV.	DATE	DESCRIPTION	BY	CHK.	APP.
A1	3-10-17	Conceptual Design - Tracker Mounting System	DA	JH	JH

Feature	Description
Boundary	
Coordinate System	
Topography	
Hydrology	
Wetlands	
Geotechnical	
Environmental Constraint	

Site Plan Data Source

FS JOB #: 0000-0000-00
PROJ. DSGR:
PROJ. ENGR:
PROJ. MGR:
PROJ. DIR: John Hartelius P.E.
SCALE: AS NOTED
SHEET TITLE: **Site Development Plan**

THIS PRINT IS DESIGNED FOR 24" X 36" PLOTTING

THIS SITE DEVELOPMENT PLAN IS PRELIMINARY AND SUBJECT TO REVISION BASED ON, AMONG OTHER THINGS, CHANGES IN PROJECT SCHEDULE, TECHNOLOGY, AND/OR SITE SPECIFIC CONSTRAINTS.

THIS PRINT IS NOT TO BE USED FOR CONSTRUCTION UNLESS NOTED AND SIGNED OK FOR CONSTRUCTION ABOVE LAST REVISION.

SD-100-T
SHEET 1 OF 1

C:\Users\FS106159\Desktop\Y-Drive\FS_Drive\FS_Projects\FS_Site Development\First Solar AU\Bulli Creek Solar Farm\Active Drawings\Bulli Creek Solar Farm SD-100-T-ALT-1.dwg FS106159 Mar 10, 2017 - 10:57am

THIS PUBLICATION CONTAINS VALUABLE PROPRIETARY AND CONFIDENTIAL INFORMATION OF FIRST SOLAR, INC. FIRST SOLAR WHO RETAINS ALL COPYRIGHT RIGHTS TO IT UNDER U.S. AND INTERNATIONAL LAW AND IS PROTECTED BY U.S. AND INTERNATIONAL LAW. ANY REPRODUCTION, PREPARATION OF DERIVATIVE WORKS, DISTRIBUTION, PUBLIC PERFORMANCE OR DISPLAY, DISCLOSURE, AND/OR USE OF ALL OR ANY PORTION OF THIS PUBLICATION IN ANY FORM OR MEDIUM WITHOUT SPECIFIC WRITTEN AUTHORIZATION FROM FIRST SOLAR IS STRICTLY PROHIBITED.