



Variation of conditions attached to approval

Riley DSO Hematite Mine Project, Tasmania (EPBC 2012/6339)

This decision to vary conditions of approval is made under section 143 of the *Environment Protection and Biodiversity Conservation Act 1999* (EPBC Act).

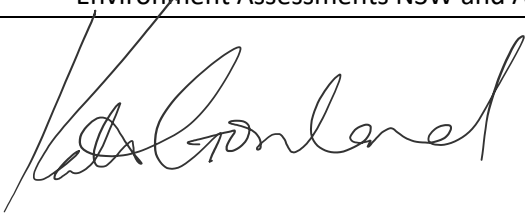
Approved action

approval holder	Gold Valley Tasmania Ptd Ltd ACN: 127 417 921
approved action	To develop a direct shipping ore (DSO) hematite mine near Riley Creek in north western Tasmania. See EPBC Act referral 2012/6339.
period for which the approval has effect	This approval has effect until 31 December 2028.

Variation

variation of conditions attached to approval	<p>The variation is:</p> <p>Delete conditions 3, 4, 5, 6, 16, 21, 28 and 32 and substitute with conditions 3, 4, 5, 6, 16, 21, 28 and 32 specified in the table below.</p> <p>Add the new conditions 4A, 16A, 16B and 16C to the approval as specified in the table below.</p> <p>Revoke condition 19 as specified in the table below.</p> <p>Delete the definition of Authorised vehicle, Department and Tasmanian Devil and Spotted-tail Quoll Habitat Management and Monitoring Plan and substitute with the definitions specified in the table below.</p> <p>Add the new definitions of Business Day, CPI and Suitably qualified expert as specified in the table below.</p> <p>Revoke the definition of Suitably qualified person as specified in the table below.</p> <p>Delete Attachment A and Attachment B and substitute with the attachments specified in the table below.</p>
date of effect	This variation has effect on the date this instrument is signed.

Person authorised to make decision

name and position	Kate Gowland Branch Head Environment Assessments NSW and ACT
Signature	
date of decision	23 February 2026

date of decision	conditions attached to approval
<i>Original dated 03/08/2013</i>	<p>General protection of EPBC species</p> <ol style="list-style-type: none"> 1. The person taking the action must develop an environmental induction training and awareness program that instructs all staff, contractors and visitors on the importance of protecting EPBC species at, and while travelling to and from, the mine site. The program must: <ol style="list-style-type: none"> a. include face to face sessions, prominently displayed posters and provision of glovebox guides; b. include clear images and simple descriptions (including distinguishing features) to aid in the identification of EPBC species; c. includes information on how to identify signs and symptoms of tree dieback resulting from <i>Phytophthora cinnamomi</i> outbreaks; d. include maps of high risk EPBC species roadkill locations, identified and updated every 6 months in consideration of monitoring data collected subject to these conditions and any information published by the Save the Tasmanian Devil Program; e. include instructions on how to avoid or reduce incidences of all fauna species roadkill; f. include protocols for dealing with food waste to avoid attracting any EPBC species to the site;

-
- g. include protocols for dealing with injured **EPBC species**, including:
 - i. animal welfare considerations;
 - ii. initial response provisions; and
 - iii. expert care provisions
 - h. provide information on roles and responsibilities, including recording and reporting obligations for **staff** who observe **EPBC species** (dead or alive) and provide any template documents used in these requirements; and
 - i. include reference to the penalties imposed on any workers found causing intentional harm to **EPBC species**, including legal and **onsite** environmental responsibilities.

The induction training program must commence at or prior to the **commencement** of the action and be maintained until **completion** of the action (including mine closure and rehabilitation) to ensure that all **staff, contractors and visitors** who work, visit or travel to the **mine site** are inducted prior to any **onsite** activity. Details of induction (including names and contact details of attendees) must be logged and maintained within an induction register.

*Original dated
03/08/2013*

- 2. The person taking the action must ensure that monthly meetings are held prior to the commencement of each shift to maintain worker knowledge about the importance of avoiding and minimising impacts (particularly roadkill) on **EPBC species** and of recording and reporting observations of **EPBC species**.

*As varied on the date
this instrument was
signed*

- 3. The person taking the action must ensure that any sighting by any **staff, contractor or visitor** of faunal **EPBC species** (dead or alive) on the ground within the **mine site** or along the section of Pieman Road between the **mine site** and its intersection with the Murchison Highway is recorded. The details to be recorded for each sighting must include:
 - a. species;
 - b. whether live, injured or dead;
 - c. date and time of sighting;
 - d. **coordinates** and other identifying information of the location of the faunal **protected matter** when sighted;
-

-
- e. if the faunal **protected matter** is injured or dead, an estimate of the time and location of it being injured, including whether it likely occurred during **daylight hours** or outside of **daylight hours**;
 - f. whether the location is near or in a section of road where virtual fencing is installed;
 - g. whether any **authorised vehicle** travelling to or from the **mine site** caused, or is likely to have caused, the roadkill death; and
 - h. any noteworthy circumstances including the likely cause of injury or death, where relevant.

Note: All **EPBC species** roadkill detected in the course of implementing Condition 18 are sightings for the purpose of this condition and must be recorded in accordance with the above requirements.

As varied on the date this instrument was signed

- 4. The person taking the action must ensure that targeted pre-clearance surveys for **EPBC species** are undertaken by a **suitably qualified expert** prior to any **vegetation clearance**. Specific features to be targeted, along with a mandatory management response in parenthesis, must include:
 - a. Tasmanian Wedge-tailed Eagle nests (if the **suitably qualified expert** determines that the nest is occupied then all work within 500 m, or 1 km if activity is within the line of site of the nest, must cease during the breeding season, until any chicks have been fledged, as determined by a **suitably qualified expert**);
 - b. Masked Owl nests (if the **suitably qualified expert** determines that the nest is occupied then all works within 50 metres of the nest must cease during the breeding season);
 - c. Tasmanian Devil dens (cease all works within 50 m of the den until it is vacated and the individual(s) have naturally dispersed from the area as determined by a **suitably qualified expert**); and
 - d. Tasmanian Spotted-tail Quoll dens (cease all works within 50 m until the den is vacated and the individual(s) have naturally dispersed from the area as determined by a **suitably qualified expert**).

Pre-clearance surveys must be documented, including details of results, methodology, and personnel (and their qualifications).

As varied on the date this instrument was signed

- 4A) The person taking the action must ensure that, following the recommencement of mining activities after the date of this variation decision,
- a. for the first 7 **business days** pre-start walk-over surveys are conducted in the specific areas of the **mine site** where operations are to take place, by trained personnel to identify potential signs of Tasmanian Devil or Tasmanian Spotted-tail Quoll activity, including new dens, tracks or scats;
 - b. the trained personnel complete a Tasmanian Devil and Tasmanian Spotted-tail Quoll signs checklist daily, and submit each completed checklist to the **department** within 2 **business days** of all 7 checklists being completed;
 - c. if any potential den is detected, any works within 50 metres of the location of the potential den is ceased immediately and not recommenced until a **suitably qualified expert** has undertaken an onsite assessment and confirmed that no active den is present or that management required under Conditions 4(c) and 4(d) has been implemented;
 - d. any new den identified by a **suitably qualified expert** is managed in accordance with Conditions 4) c) and 4) d); and
 - e. the locations of all camera traps ensure full coverage taking into account any new devil hotspots if these have changed since mining last occurred in the **mine site**.

As varied on the date this instrument was signed

5. The person taking the action must ensure that all Tasmanian Devil and Tasmanian Spotted-tail Quoll denning opportunities (whether active or not) identified during targeted pre-clearance surveys required by Condition 4 and 4A of this approval, are documented. Details to be recorded must include:
- a. description;
 - b. coordinate location;
 - c. quality; and
 - d. any evidence of recent use or activity.

As varied on the date this instrument was signed

6. The person taking the action must engage a **suitably qualified expert** to design and plan the creation of new denning opportunities to compensate for the loss of any Tasmanian Devil and Tasmanian
-

Spotted-tail Quoll dens recorded in accordance with Condition 5 of this approval. The planned denning opportunities must:

- a. be created using suitable tree trunks, large stumps, roots, branches and rocks removed during clearing activities onsite;
- b. be placed at intervals around the outskirts of the mining area at least 50 m from any disturbed area and roads;
- c. achieve at least the quantum and quality of any denning opportunities disturbed, identified and recorded during pre-clearance surveys (in accordance with Condition 5); and
- d. be built progressively as soon as adequate materials from clearing activities become available.

*Original dated
03/08/2013*

- 7. The person taking the action must ensure that progressive rehabilitation is undertaken during mining operations, including:
 - a. collection of seeds prior to timber harvesting to be stored and used in final rehabilitation;
 - b. the stockpiling of any removed coarse woody debris and large rocks **onsite**; and
 - c. the spreading of any topsoil removed during excavation works over any exposed fines returned to the mined area following processing. If no returned fines are available, topsoil must be stockpiled on site separate from stockpiled rehabilitation materials; and
 - d. the covering of any returned topsoil as soon as practicable with mulched vegetation to prevent erosion.

*Original dated
03/08/2013*

- 8. The person taking the action must ensure that the maximum area of land disturbed by extractive and processing works, including associated roading, which may remain at any one time without rehabilitation works having been undertaken is 20 ha.

*Original dated
03/08/2013*

- 9. The person taking the action must ensure that the area of cleared and exposed land occurring at any one time in each of the zones marked Riley Laterite Area (RLA) A, RLA B, RLA C, and RLA D in Attachment A does not exceed 3 ha.

*Original dated
03/08/2013*

- 10. To ensure the protection of any Tasmanian Azure Kingfisher habitat that may occur downstream from the **mine site**, the person taking the action must implement surface water quality control measures. These measures must include:

-
- a. sediment settling ponds. These ponds must be designed to successfully mitigate reasonably foreseeable sediment loss which would result from a 1 in 20 year storm event and be regularly cleaned to ensure design capacity is maintained; and
 - b. the collection and treatment of any polluted stormwater prior to discharge from the **mine site**;
 - c. the implementation of a minimum 15 m buffer between mining operations and Riley Creek and Three Mile Creek (as shown in Attachment B);
 - d. the implementation of a minimum 30 m buffer between mining operations and Trinder Creek (as shown in Attachment B);
 - e. the implementation of cut-off drains and sediment basins in RLA B and RLA D to intersect surface flow before discharge downstream; and
 - f. the installation of temporary silt fences downslope from areas of returned fines to prevent fines entering any waterway. Silt fencing must be appropriately sized, cleaned and maintained to trap fine particles to ensure turbidity levels do not exceed those required by condition 11.

*Original dated
03/08/2013*

11. The person taking the action must develop a surface water quality monitoring and control plan (SWQMCP). The SWQMCP must include provisions for ongoing surface water monitoring at the sites identified in Attachment C and report against the following limits:
 - a. pH levels must not be lower than 6.0 and must not exceed 8.0; and
 - b. Turbidity levels must not exceed 55 NTU.

The SWQMCP must outline what strategies will be implemented to ensure limits are not exceeded.

The SWQMP must be submitted to the **Minister** for approval prior to the **commencement of the action**. The action must not commence until the plan is approved by the **Minister**. The approved SWQMCP must be implemented.

*Original dated
03/08/2013*

12. The person taking the action must implement measures to prevent the spread or establishment of new or additional weed species, and /
-

or soil or plant pathogens within the mine site. These measures must include, but need not be limited to:

- a. the implementation of hygiene treatment stations at all entry points to the mine site;
 - b. that all machinery and vehicles undertaking earthworking activities are cleaned of all soil and vegetative material immediately prior to entering and leaving the site; and
 - c. any signs or symptoms of a *Phytophthora cinnamomi* infection identified within the mine site are treated in accordance with the Tasmanian Department of Primary Industries, Water and Environment *Interim Phytophthora cinnamomi Management Guidelines* (2005).
-

*Original dated
03/08/2013*

Protection of EPBC species from traffic impacts

13. The person taking the action must provide for each work shift a bus to transport **staff, contractors and visitors** between the **mine site** and (at least) the town of Tullah. The service must be:
 - a. free of charge;
 - b. advertised through the environmental awareness and induction program described in Condition 1; and
 - c. capable of carrying all **staff, contractors and visitors**.

The person taking the action must implement measures to ensure that **staff, contractors and visitors** use the bus to travel to and from the **mine site** except in accordance with specified written exceptions agreed to in advance by the **department**.

*Original dated
03/08/2013*

14. The person taking the action must ensure that any new roads within the **mine site** are designed, built and maintained in a manner that minimises the potential for **EPBC species** roadkill, through deterrence and increased visibility, including in particular:
 - a. the use of **light coloured aggregate**; and
 - b. installation of table drains to minimise pooling of water and vegetation growth.
-

*Original dated
03/08/2013*

15. The person taking the action must ensure that all new and existing roads within the **mine site**:
 - a. are clearly signposted with speed limits of no more than 40 kph; and
-

-
- b. undergo active management of vegetation within 5 metres of the edge of the road for the life of the approval to maximise fauna visibility.

As varied on the date this instrument was signed

- 16. The person taking the action must ensure that **authorised vehicles** used to transport product ore (whether empty or full), and the bus as required by condition 13, do not travel outside **daylight hours** unless the following conditions are complied with while such a vehicle is travelling outside **daylight hours**:
 - a. the vehicle does not exceed 60 kph along the section of Pieman Road between the **mine site** and the intersection with the Murchison Highway;
 - b. the vehicle is equipped with headlights and high beam lights and those lights are used in a manner that allows the driver maximum opportunity to see and avoid wildlife;
 - c. virtual fencing is installed, fully operational and in use as a roadkill mitigation measure in all the locations specified in Table 2 at Attachment D; and
 - d. the person taking the action implements the roadkill mitigation measures specified in the **Roadkill Minimisation Plan**.

The person taking the action must not allow **authorised vehicles** to transport product ore (whether empty or full) to travel outside daylight hours after 31 December 2027.

As varied on the date this instrument was signed

- 16A) The person taking the action must also ensure that no **authorised vehicle** used to transport product ore (whether empty or full) travels within the **mine site** or along the section of Pieman Road between the **mine site** and the intersection with the Murchison Highway outside **daylight hours** unless the following requirements are met in respect of any such a vehicle travelling outside **daylight hours**:
 - a. the vehicle is fitted with an operating georeferenced speedometer that is recording the speed at which the vehicle is travelling and the vehicle's location when travelling at that speed;
 - b. within ten **business days** of the end of each month the person taking the action compiles from all speedometer and other data, a table setting out the number of trips undertaken outside of **daylight hours**, the time at which
-

each trip departed or arrived at the **mine site**, and the time and location of any vehicle exceeding 60 kph.

- c. within twenty **business days** of the end of each month the person taking the action publishes the table required under b. above on their **website**, and
- d. the person taking the action keeps each table required under b. above published on their **website** until the expiry date of this approval.

As varied on the date this instrument was signed

16B) Before **authorised vehicles** commence transporting ore outside of **daylight hours**, the person taking the action must submit to the **department** a revised version of the **Roadkill Minimisation Plan** (hereafter the 'Revised RMP') for approval by the **Minister**. The Revised RMP must include:

- a. an independent verification process capable of providing assurance that the requirements of conditions 3, 16, 16A, 16C, 17 and 18 are being complied with, and
- b. a six-monthly review process to assess data collected under conditions 3, 16, 16A, 16C, 17 and 18 in conjunction with reporting required under condition 32.

The person taking the action must not transport product ore outside **daylight hours** unless the Revised RMP has been approved by the **Minister** in writing.

The person taking the action must implement the Revised RMP until the expiry of the approval.

As varied on the date this instrument was signed

16C) If the number of **EPBC species** roadkill that is caused by an **authorised vehicle** travelling within the **mine site** or along the section of Pieman Road between the **mine site** and the intersection with the Murchison Highway outside of **daylight hours** exceeds one or more of the following thresholds, the person taking the action must:

- a. within two **business days** of the threshold being reached, inform the department in writing,
 - b. cease travel outside of **daylight hours**,
 - c. submit a Revised RMP that includes additional mitigation measures to the **Minister** for approval, and
 - d. not re-commence travel outside of **daylight hours** until the Revised RMP has been approved by the **Minister**.
-

	<p>Thresholds:</p> <ul style="list-style-type: none"> - two Tasmanian Wedge-tailed Eagle deaths - two Spotted-tail Quoll deaths - four Tasmanian Devil deaths.
<i>Original dated 03/08/2013</i>	17. The person taking the action must ensure that all authorised vehicles are fitted with animal deterrence technology such as ultrasonic animal alert whistles.
<i>Variation dated 31/08/2021</i>	18. The person taking the action must ensure that the section of Pieman Road between the mine site and the intersection with the Murchison Highway, and all roads within the mine site , are free of roadkill by undertaking two daily inspections, the first inspection within 3 hours after sunrise and the second inspection within 3 hours before sunset , and at each inspection removing all carcasses (whether EPBC species or not) to at least 250 metres from the edge of the road.
<i>As varied on the date this instrument was signed</i>	19. REVOKED
<i>Original dated 03/08/2013</i>	<p>Monitoring and reporting</p> <p>20. Prior to the commencement of the action, the person taking the action must establish an EPBC species register on their website that includes all records of sighting of EPBC species (including carcasses), as collected under Conditions 3, 4 and 18 of this approval. This register must be updated at least once a month until completion of the action (including mine closure and rehabilitation).</p>
<i>As varied on the date this instrument was signed</i>	<p>21. The person taking the action must undertake monitoring in accordance with the Tasmanian Devil and Spotted-tailed Quoll Habitat Management and Monitoring Plan (HMMP), including:</p> <ul style="list-style-type: none"> a. the installation of four camera traps within the mine site prior to the commencement of the action, dedicated to identifying incidences of DFTD; b. the installation of an additional four camera traps, following the creation of built denning opportunities, dedicated to monitoring the use and effectiveness of built denning opportunities; c. the placement of all cameras in locations to be determined by a suitably qualified expert. These locations may change over time to target devil

hotspots and/or newly created denning opportunities; and

- d. all camera traps must be checked and serviced weekly and remain operational until **completion** of the action (including closure and rehabilitation).

*Original dated
03/08/2013*

22. Within three (3) months of the **completion** of the action, the person taking the action must prepare and submit to the **department**, a report on the Tasmanian Devil and Tasmanian Spotted-tail Quoll habitat management. The report must be prepared in consultation with a **suitably qualified expert** and include:

- a. details on the location, quantity and quality of denning opportunities created **onsite**;
- b. details on the effectiveness of the created denning opportunities in reference to the results of the monitoring required by Condition 21.
- c. any observed trends in the local populations of these species; and
- d. details (location, date, circumstance) of any identified cases of **DFTD**.

*Original dated
03/08/2013*

23. Within fourteen (14) days of a request the person taking the action must make available any raw data relating to the Tasmanian Devil and **DFTD**, on request from any Commonwealth or Tasmanian Government agency or the Save the Tasmanian Devil Program.

*Variation dated
20/05/2015*

Compensation for unavoidable impacts

24. To compensate for unavoidable impact to the Tasmanian Devil through roadkill, the person taking the action must contribute no less than \$144 000 (GST exclusive) in funding to the Save the Tasmanian Devil Program, in accordance with any approved Tasmanian devil recovery plan and explicitly for the purpose of "**Maintenance of the Tasmanian Devil Insurance Population**".

At least 50% of this sum must be contributed within twelve (12) months of **substantial commencement of the action**, and the balance within 24 months of **substantial commencement of the action**.

Note: It is acknowledged that the details of how the funds will be spent will be decided, within the parameters specified by these conditions, by the Save the Tasmanian Devil

Program. There is no objection to the person taking the action discussing the specific direction of these funds with the program.

*Original dated
03/08/2013*

Mine closure and rehabilitation

25. Following the permanent cessation of product excavation and transportation, and prior to the commencement of **final rehabilitation** works on site, the person taking the action must submit the most recent version of the **Decommissioning and Rehabilitation Plan (DRP)** to the **Minister** for information.

*Original dated
03/08/2013*

26. If the **Minister** is not satisfied that the **DRP** referred to in Condition 25 will adequately provide for the permanent protection of **EPBC species**, the **Minister** may require a supplement or additional plan to be prepared and submitted for approval.

Any supplements or additional plan must be implemented once it has been approved by the **Minister**.

*Variation dated
31/08/2021*

27. The **Minister** may at any time review the security deposit lodged by the person taking the action pursuant to Schedule 2 of **Mining Lease 5M/2012**. If the **Minister** is not satisfied that the security deposit lodged will adequately provide for the implementation of the plan referred to in Condition 25, as well as any supplements as described in Condition 26, the **Minister** may require that the person taking the action establishes an additional security deposit in trust, under conditions approved by the **Minister**.

*As varied on the date
this instrument was
signed*

Contingency conditions

28. In the event of the following **EPBC species** deaths occurring within the **mine site**, or being caused by an **authorised vehicle** travelling to or from the **mine site** along the section of Pieman Road between the **mine site** and the intersection with the Murchison Highway, the approval holder must implement the corresponding associated contingency compensation response as follows:

- a. for each Tasmanian Wedge-tailed Eagle death beyond one (1), the person taking the action must contribute at least the equivalent, by application of the **CPI**, of the value of \$20,000 (GST exclusive) on the date this variation decision was signed, to a regional or statewide Tasmanian Wedge-tailed Eagle conservation program/s as agreed in writing by the **department** for this purpose;
 - b. for each Spotted-tail Quoll death beyond one (1), the person taking the action must fund a three (3) month program of feral dog and/ or cat eradication in the Tullah region; and
-

-
- c. for each Tasmanian devil death beyond three (3), the person taking the action must contribute at least the equivalent, by application of the **CPI**, of the value of \$48 000 (GST exclusive) on the date this variation decision was signed, to a **Maintenance of the Tasmanian Devil Insurance Population** activity agreed in writing by the **department**.
-

*Original dated
03/08/2013*

Administrative conditions

29. Within fourteen (14) days after the **commencement** of the action, the person taking the action must advise the **department** in writing of the actual date of **commencement**.
-

*Original dated
03/08/2013*

30. The person taking the action must notify the **department** of any non-compliance with these conditions within two (2) days becoming aware of the non-compliance, along with the proposed remediation response where appropriate. Once agreed with the **department**, any response must be implemented.
-

*Original dated
03/08/2013*

31. The person taking the action must maintain accurate records substantiating all activities associated with or relevant to the conditions of approval, including measures taken to implement a management plan or reports, required by this approval, and make them available upon request to the **department**. Such records may be subject to audit by the **department** or an independent auditor in accordance with section 458 of the **EPBC Act**, or used to verify compliance with the conditions of approval. Summaries of audits will be posted on the **department's** website. The results of audits may also be publicised through the general media.
-

*As varied on the date
this instrument was
signed*

32. Within three months of every 12-month anniversary of the **commencement** of the action until **completion** of the action, the person taking the action must publish on their website, and provide the **department** with, a report addressing compliance with all of the conditions of this approval since the previous compliance report, including but not limited to the following:
- a. a summary of induction training and awareness activity undertaken or proposed;
 - b. an extract for the reporting period of the **EPBC species** register established under Condition 20;
 - c. all data collected in relation to Condition 3;
 - d. reporting against commitments in the Revised RMP;
-

-
- e. details of progress against actions (including documentary evidence of payments) required under Conditions 4), 4A), 6), 7), 10), 17), 24), and, if required, 28;
 - f. details of any **emergency travel** undertaken outside of **daylight hours** as allowed under Condition 16;
 - g. information on compliance (and non-compliance) with any management plans and reports required by conditions within this approval; and
 - h. details of any other incidences of non-compliance with these conditions along with any associated remedial action undertaken, underway or proposed.
-

*Original dated
03/08/2013*

33. Upon the direction of the **Minister**, the person taking the action must ensure that an independent audit of compliance with the conditions of approval is conducted and a report submitted to the **Minister**. The independent auditor must be approved by the **Minister** prior to the commencement of the audit. Audit criteria must be agreed to by the **Minister** and the audit report must address the criteria to the satisfaction of the **Minister**.
-

*Original dated
03/08/2013*

34. If the person taking the action wishes to carry out any activity otherwise than in accordance with the management plan as specified in the conditions, the person taking the action must submit to the **department** for the **Minister's** written approval a revised version of that management plan. The varied activity shall not commence until the **Minister** has approved the varied management plan in writing. The **Minister** will not approve a varied management plan unless the revised management plan would result in an equivalent or improved environmental outcome over time. If the **Minister** approves the revised management plan, that management plan must be implemented in place of the management plan originally approved.
-

*Original dated
03/08/2013*

35. If the **Minister** believes that it is necessary or convenient for the better protection of **EPBC species** to do so, the **Minister** may request that the person taking the action make specified revisions to the management plan specified in the conditions and submit the revised management plan for the **Minister's** written approval. The person taking the action must comply with any such request. The revised approved management plan must be implemented. Unless the **Minister** has approved the revised management plan, then the person taking the action must continue to implement the management plan originally approved, as specified in the conditions.
-

<i>Original dated 03/08/2013</i>	36. If, at any time after five (5) years from the date of this approval, the person taking the action has not substantially commenced the action, then the person taking the action must not substantially commence the action without the written agreement of the Minister .
<i>Original dated 03/08/2013</i>	37. Unless otherwise agreed to in writing by the Minister , the person taking the action must publish all management plans and reports referred to in these conditions of approval on their website. Each management plan or report must be published on the website within 1 month of being approved.
date of decision	definitions attached to approval
<i>As varied on the date this instrument was signed</i>	Authorised vehicles means any vehicles authorised by the person taking the action to enter the mine site , whenever they are operating at, or travelling to or from, the mine site . Authorised vehicle includes any vehicle used by any staff, contractors and visitors to travel to or from the mine site .
<i>As varied on the date this instrument was signed</i>	Business day/s means a day that is not a Saturday, a Sunday or a public holiday in the state of Tasmania.
<i>Original dated 03/08/2013</i>	Commencement of the action means the construction of any infrastructure, excluding fences and signage, associated with the proposed action.
<i>Original dated 03/08/2013</i>	Completion of the action means the earliest of the following potential events: <ul style="list-style-type: none"> a. this approval expires or is revoked; b. Mining Lease 5M/2012 expires or is permanently withdrawn, surrendered or revoked; or c. the mine is closed (including rehabilitation activities) in accordance with an approved mine closure plan.
<i>Original dated 03/08/2013</i>	Coordinates means latitude and longitude (or any other measure consistent with any protocol established by the Save the Tasmanian Devil Program), measured by global positioning system (GPS) at the mine site and wherever else possible.

<i>As varied on the date this instrument was signed</i>	CPI means the Consumer Price Indexes, based on the Change for All Groups Annual Movement CPI for each intervening 12-month period, published on the Australian Bureau of Statistics website.
<i>Variation dated 31/08/2021</i>	Daylight hours means 30 minutes after sunrise until 30 minutes prior to sunset .
<i>Original dated 03/08/2013</i>	Decommissioning and Rehabilitation Plan means the document titled <i>Decommissioning & Rehabilitation Plan for the Riley Mine Project</i> , prepared by Pitt&Sherry for Venture Minerals Limited, dated March 2013, Rev 04, and any revisions of this plan submitted to the Minister .
<i>As varied on the date this instrument was signed</i>	Department means the Australian Government agency responsible for administering the EPBC Act .
<i>Original dated 03/08/2013</i>	DFTD means the transmissible Tasmanian devil disease, Devil Facial Tumour Disease.
<i>Original dated 03/08/2013</i>	Emergency travel means travel for the purpose of fire suppression, injury or illness response or maintenance and repair of infrastructure critical to the operation of the mine, as well as travel by official emergency services vehicles.
<i>Original dated 03/08/2013</i>	EPBC Act means the <i>Environment Protection and Biodiversity Conservation Act 1999</i> .
<i>Variation dated 31/08/2021</i>	<p>EPBC species means any flora or fauna species listed under the EPBC Act as threatened or migratory and that is known or considered likely to occur at the mine site, but must include the following species:</p> <ul style="list-style-type: none"> • Tasmanian Wedge-tailed Eagle (<i>Aquila audax fleayi</i>) • Tasmanian Azure Kingfisher (<i>Ceyx azureus diemenensis</i> syn. <i>Alcedo azurea</i> subsp. <i>diemenensis</i>) • Tasmanian Masked Owl (<i>Tyto novaehollandiae castanops</i>) • Spotted-tail Quoll – Tasmanian population (<i>Dasyurus maculatus maculatus</i>) • Tasmanian Devil (<i>Sarcophilus harrisii</i>)
<i>Original dated 03/08/2013</i>	Final rehabilitation means decommissioning of infrastructure and revegetation of mined and disturbed areas.

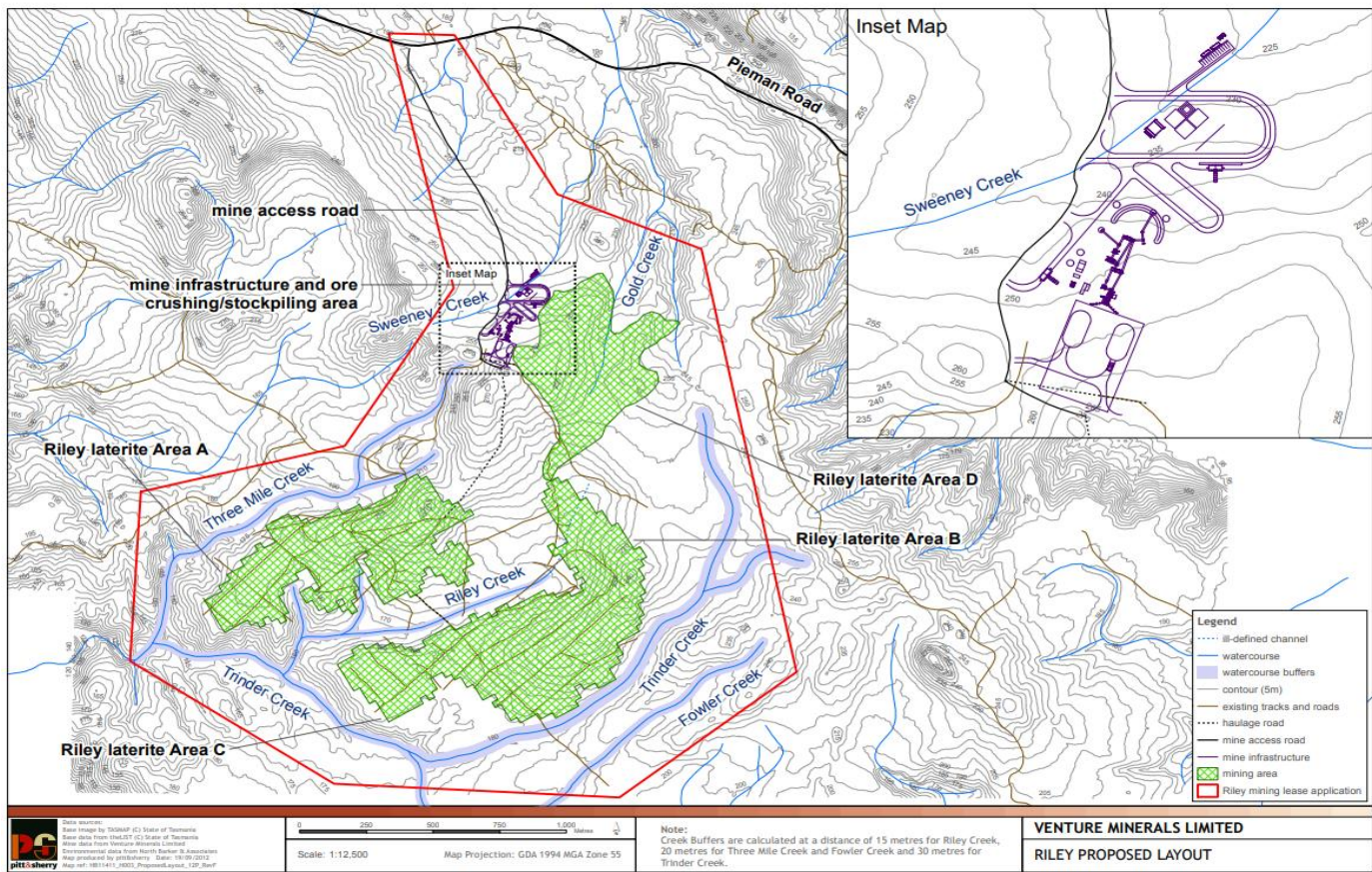
<i>Original dated 03/08/2013</i>	Light coloured aggregate means a colour shade that improves visibility of an EPBC species (particularly the Tasmanian devil) by increasing contrast between the animal and the road surface.
<i>Original dated 03/08/2013</i>	Maintenance of the Tasmanian Devil Insurance Population means any activities associated with the care of Tasmanian devils within the Insurance Population established and managed by the Save the Tasmanian Devil Program, including capture and release, transport, feeding, enclosure and security, monitoring, veterinary care and breeding support, but does not include program oversight and administration, public awareness or research activities.
<i>Original dated 03/08/2013</i>	Mine site (and "onsite") means the entire area (or areas) from which public access is excluded by signage and/ or fencing, for the purposes of constructing and operating the approved mine.
<i>Original dated 03/08/2013</i>	Mining Lease 5M/2012 means the lease granted by the Tasmanian Government under the <i>Mineral Resources Development Act 1995</i> for the undertaking of the action, as originally granted on 20 December 2012.
<i>Original dated 03/08/2013</i>	Minister means the Minister administering the Environment Protection and Biodiversity Conservation Act 1999 and includes a delegate of the Minister.
<i>Variation dated 31/08/2021</i>	Roadkill Minimisation Plan means the document entitled <i>Roadkill Minimisation Plan</i> including its Appendices, prepared by Pitt&Sherry and dated 4 November 2019, or a subsequent version approved by the Minister in writing.
<i>Variation dated 31/08/2021</i>	Staff, contractors and visitors / staff, contractor or visitor means all persons authorised by the person taking the action to enter the mine site .
<i>Variation dated 20/05/2015</i>	Substantially commenced/substantial commencement of the action means the commencement of extraction of ore.
<i>As varied on the date this instrument was signed</i>	Suitably qualified expert (for the purpose of undertaking environmental surveys) means a person who has relevant professional qualifications and at least 3 years of work experience designing and implementing surveys for the Tasmanian Devil, Spotted-tail Quoll, Wedge-tailed Eagle, Masked Owl and Azure Kingfisher and can give an authoritative assessment and advice on the presence of Tasmanian Devil, Spotted-tail Quoll, Wedge-tailed Eagle, Masked Owl and Azure Kingfisher using relevant protocols, standards, methods and/or literature.

<i>As varied on the date this instrument was signed</i>	Suitably qualified person – REVOKED
<i>Variation dated 31/08/2021</i>	Sunrise/sunset means the sunrise and sunset times for the town of Rosebery, Tasmania, as detailed on the Australian Government Bureau of Meteorology’s official phone app or the Geoscience Australia website (https://geodesyapps.ga.gov.au/sunrise).
<i>As varied on the date this instrument was signed</i>	Tasmanian Devil and Spotted-tailed Quoll Habitat Management and Monitoring Plan means the document titled <i>Riley Mine Project Tasmanian Devil and Spotted-tailed Quoll Habitat Management and Monitoring plan</i> , prepared by Pitt&Sherry for Venture Minerals Limited and dated February 2013, Rev 00, or a subsequent version approved by the Minister in writing.
<i>Original dated 03/08/2013</i>	Vegetation clearance means the removal of native vegetation by any means including felling, uprooting, ringbarking or slashing. Native vegetation includes any plant species native to the area in question.
date of decision	Annexure
<i>As varied on the date this instrument was signed</i>	Attachment A – Mine Plan
<i>As varied on the date this instrument was signed</i>	Attachment B – Site Drainage Plan
<i>Variation dated 31/08/2021</i>	Attachment C – Table One - Water Sampling Sites
<i>Variation dated 31/08/2021</i>	Attachment D – Table Two- Location of Virtual Fencing

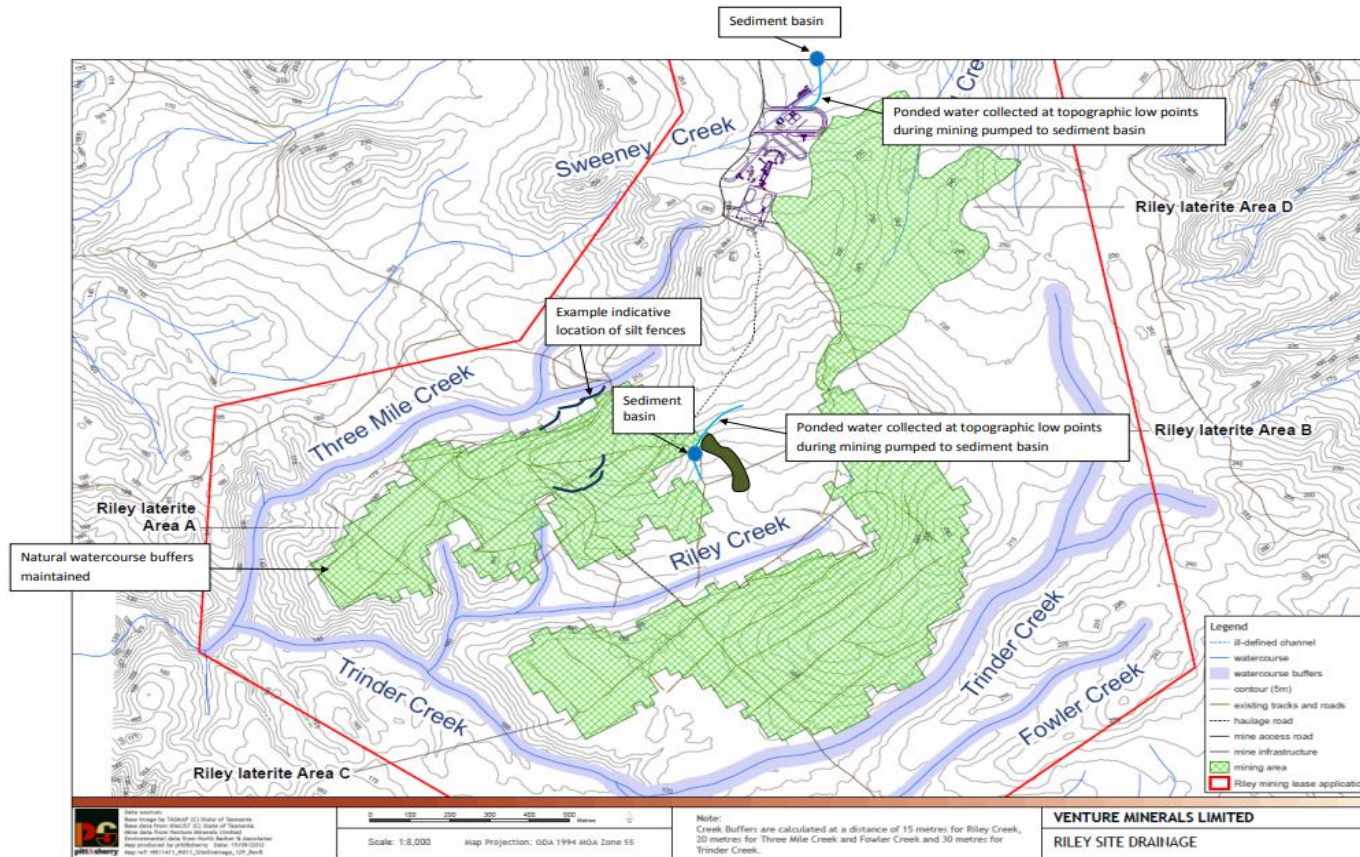


Annexure A

Attachment A – Mine Plan



Attachment B – Site Drainage Plan



Attachment C – Table One – Water Sampling Sites

Site ID	Coordinates	Location
RYSW1	367010E, 5376770N	On Three Mile Creek, 20m north of its confluence with Trinder Creek
RYSW2	367470E, 5376550N	At the base of Riley Creek, 50m north of its confluence with Trinder Creek
RYSW3	367445E, 5376510N	On Trinder Creek, 20m upstream from its confluence with Riley Creek
RYSW4	368730E, 5379000N	On Sweeney Creek downstream from the Sweeney-Gold Creek confluence, where it crosses under Pieman Road
RYSW5	368940E, 5376755N	On Trinder Creek, upstream from proposed mining operations
RSYSW6	366990E 5376650N	Downstream of the confluence of Three Mile Creek and Trinder Creek
RSYSW7	368593E 5376147N	Fowler Creek tributary above the Fowler Creek confluence

Attachment D – Table Two – Location of Virtual Fencing

Table 2 – Location of Virtual Fencing		
Column 1 No.	Column 2 Section of Road	Column 3 Number of Virtual Fencing Posts
1	From 55G 383233 E 5381246 S to a point 150m west of the Farm Ck bridge. (450 m)	18
2	East of corner 24 from 55G 381818 E 5380574 S eastward to 55G 381519 E 5380558 S. (300 m)	12
3	From just west of Corner 19 at 55G 378675 E 5380119 S westward to 55G 378406 E 5379850 S. (400 m)	16
4	From corner 15 at 55G 375754 E 5378727 S west to 55G 375421 E 5378997 S (450 m)	18
5	West of corner 9 from 55G 373603 E 5379144 S to 55G 373287 E 5379256 S (350 m)	14
6	200 m in all 3 directions from the intersection of Pieman Rd and Murchison Hwy (600 m)	24