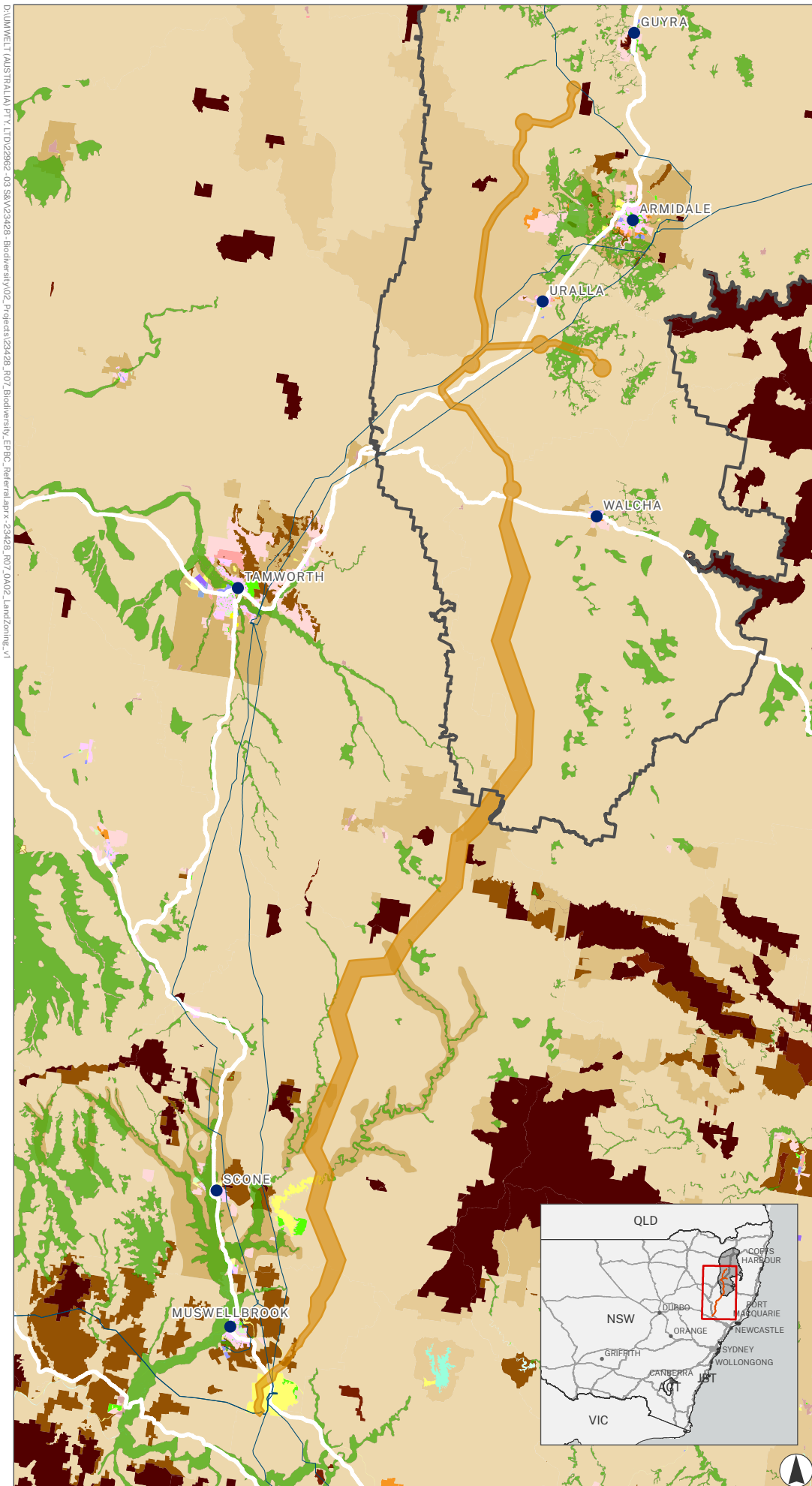


FIGURE A-2
Land Zoning and BSAL



Legend

- Project Area
- Town
- Renewable Energy Zone
- Existing high voltage lines
- Major Roads
- Biophysical Strategic Agricultural Land (BSAL)

Land Zoning

- C1 - National Parks and Nature Reserves
- C2 - Environmental Conservation; C2, Environmental Management
- C3 - Environmental Management
- C4 - Environmental Living
- E1 - Local Centre
- E2 - Commercial Centre
- E3 - Productivity Support
- E4 - General Industrial
- E5 - Heavy Industrial
- MU1 - Mixed Use
- R1 - General Residential
- R2 - Low Density Residential
- R3 - Medium Density Residential
- R5 - Large Lot Residential
- RE1 - Public Recreation
- RE2 - Private Recreation
- RU1 - Primary Production
- RU2 - Rural Landscape
- RU3 - Forestry
- RU4 - Primary Production Small Lots
- RU5 - Village
- RU6 - Transition
- SP1 - Special Activities
- SP2 - Infrastructure
- SP3 - Tourist
- W1 - Natural Waterways
- W2 - Recreational Waterways



Scale 1:1,000,000 at A4
GDA2020 MGA Zone 56

This document and the information are subject to Terms and Conditions and Umwelt (Australia) Pty Ltd ("Umwelt") Copyright in the drawings, information and data recorded ("the information") is the property of Umwelt. This document and the information are solely for the use of the authorized recipient and this document may not be used, copied or reproduced in whole or part for any purpose other than that which it was supplied by Umwelt. Umwelt makes no representation, undertakes no duty and accepts no responsibility to any third party who may use or rely upon this document or the information.
APPROVED FOR AND ON BEHALF OF Umwelt