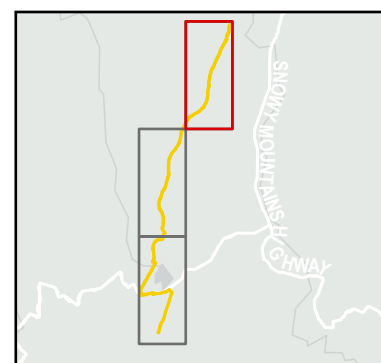


FIGURE 2.1 Proposed Action Area



- Legend**
- Proposed Action Area
 - Wallace's Creek Firetrail
 - Watercourse
 - NPWS Reserve
 - NPWS Tracks and Trails (including firetrails)



0 200 400
Metres

Scale 1:20,000 at A4
GDA2020 MGA Zone 55



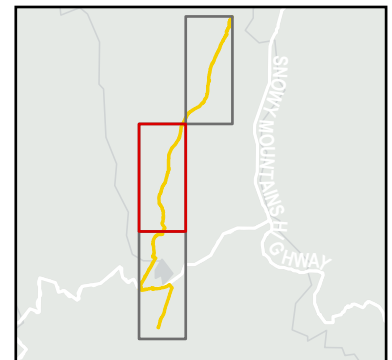
This document and the information are subject to Terms and Conditions and Umwelt (Australia) Pty Ltd ("Umwelt") Copyright in the drawings, information and data recorded ("the information") is the property of Umwelt. This document and the information are solely for the use of the authorized recipient and this document may not be used, copied or reproduced in whole or part for any purpose other than that which it was supplied by Umwelt. Umwelt makes no representation, undertakes no duty and accepts no responsibility to any third party who may use or rely upon this document or the information.

APPROVED FOR AND ON BEHALF OF Umwelt

FIGURE 2.2 Proposed Action Area



- Legend**
- — — Proposed Action Area
 - - - Wallace's Creek Firetrail
 - Watercourse
 - NPWS Reserve
 - - - NPWS Tracks and Trails (including firetrails)



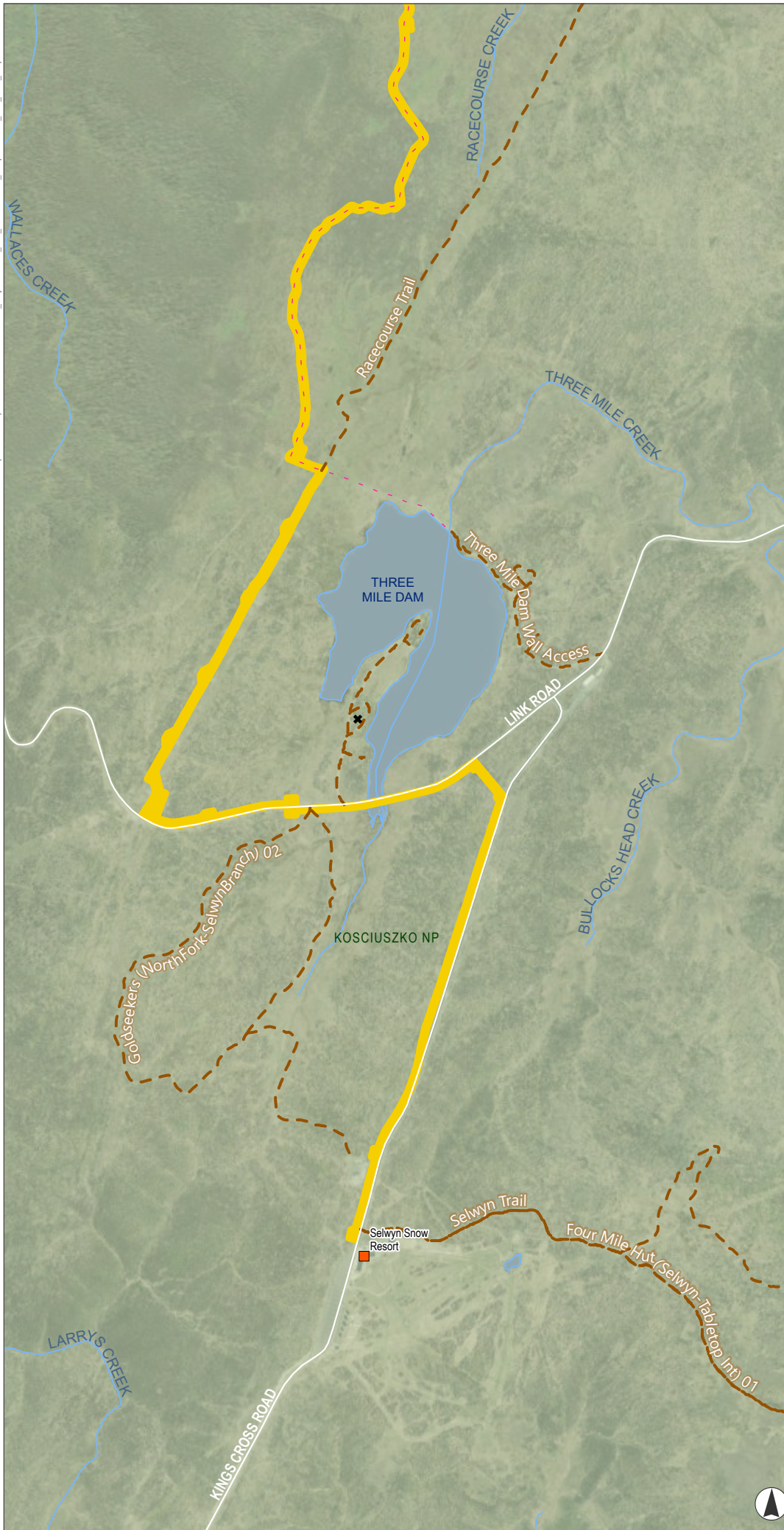
0 200 400
Metres

Scale 1:20,000 at A4
GDA2020 MGA Zone 55



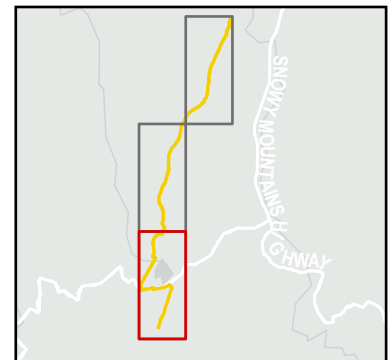
This document and the information are subject to Terms and Conditions and Umwelt (Australia) Pty Ltd ("Umwelt"). Copyright in the drawings, information and data recorded ("the information") is the property of Umwelt. This document and the information are solely for the use of the authorized recipient and this document may not be used, copied or reproduced in whole or part for any purpose other than that which it was supplied by Umwelt. Umwelt makes no representation, undertakes no duty and accepts no responsibility to any third party who may use or rely upon this document or the information.
APPROVED FOR AND ON BEHALF OF Umwelt

FIGURE 2.3
Proposed Action Area



Legend

- Proposed Action Area
- Camping Grounds
- Wallace's Creek Firetrail
- Roads
- Watercourse
- Waterbody
- NPWS Reserve
- NPWS Tracks and Trails (including firetrails)



0 200 400
Metres

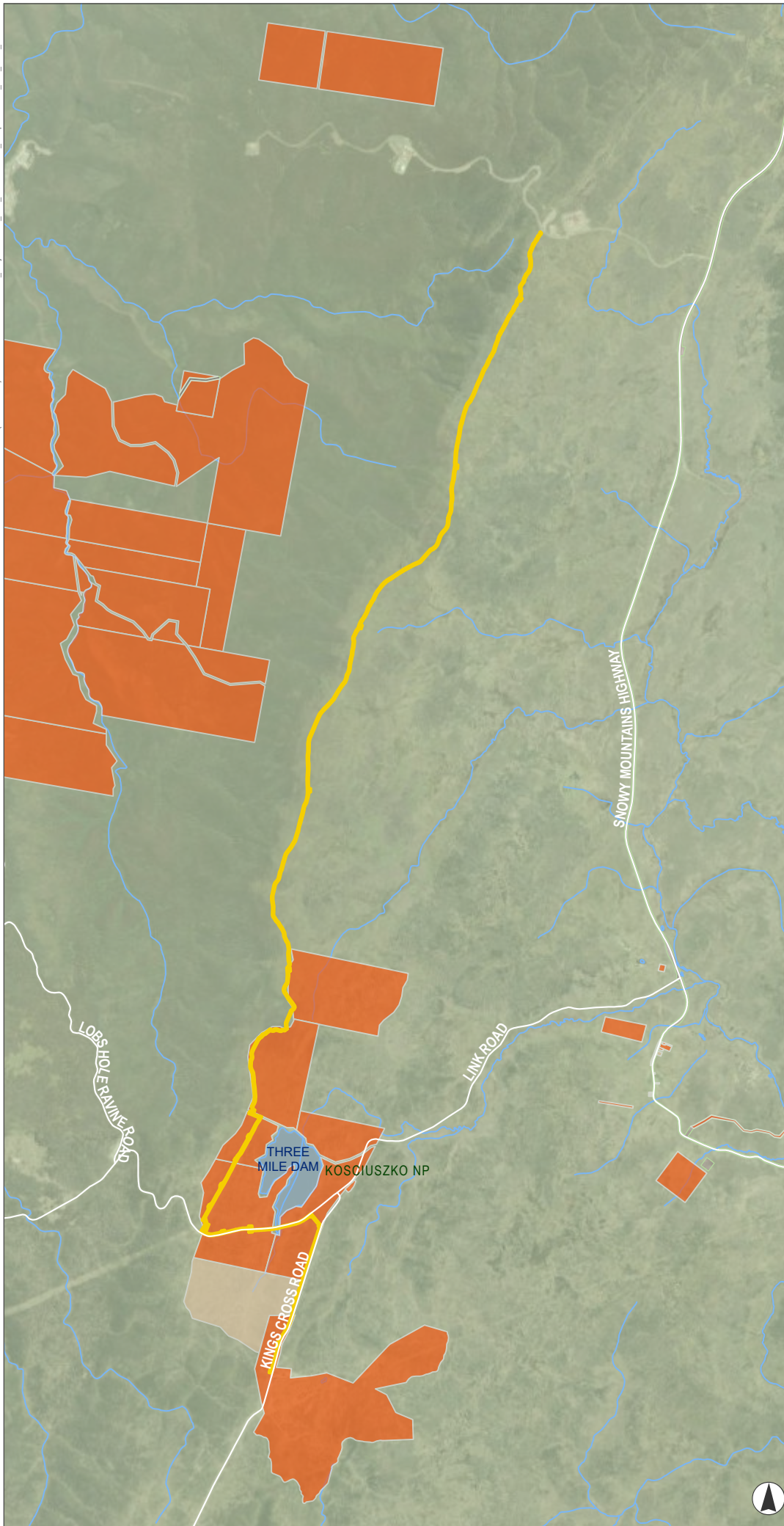
Scale 1:20,000 at A4
GDA2020 MGA Zone 55



This document and the information are subject to Terms and Conditions and Umwelt (Australia) Pty Ltd ("Umwelt") Copyright in the drawings, information and data recorded ("the information") is the property of Umwelt. This document and the information are solely for the use of the authorized recipient and this document may not be used, copied or reproduced in whole or part for any purpose other than that which it was supplied by Umwelt. Umwelt makes no representation, undertakes no duty and accepts no responsibility to any third party who may use or rely upon this document or the information.

APPROVED FOR AND ON BEHALF OF Umwelt

FIGURE 3 Land Tenure



Legend

- Proposed Action Area
- Roads
- Watercourse
- Waterbody
- NPWS Reserve
- Cadastre (by controlling authority)**
- Crown
- NSW Government



Kilometres

Scale 1:60,000 at A4
GDA2020 MGA Zone 55



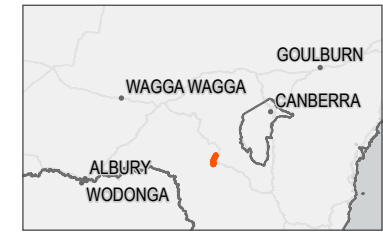
This document and the information are subject to Terms and Conditions and Umwelt (Australia) Pty Ltd ("Umwelt") Copyright in the drawings, information and data recorded ("the information") is the property of Umwelt. This document and the information are solely for the use of the authorized recipient and this document may not be used, copied or reproduced in whole or part for any purpose other than that which it was supplied by Umwelt. Umwelt makes no representation, undertakes no duty and accepts no responsibility to any third party who may use or rely upon this document or the information.

APPROVED FOR AND ON BEHALF OF Umwelt



FIGURE 1
Locality

- Legend**
- Proposed Action Area
 - Approved SCL Route (Indicative)
 - Approved SCL Route (Indicative) To Be Removed
 - Local Government Area
 - State Forest
 - Waterbody
 - Roads
 - Marica Worksite
 - Selwyn Snow Resort



Scale 1:140,000 at A4
GDA2020 MGA Zone 55



This document and the information are subject to Terms and Conditions and Umwelt (Australia) Pty Ltd ("Umwelt") Copyright in the drawings, information and data recorded ("the information") is the property of Umwelt. This document and the information are solely for the use of the authorized recipient and this document may not be used, copied or reproduced in whole or part for any purpose other than that which it was supplied by Umwelt. Umwelt makes no representation, undertakes no duty and accepts no responsibility to any third party who may use or rely upon this document or the information.
APPROVED FOR AND ON BEHALF OF Umwelt