



Edify[®]

Burroway Solar Farm

Community Consultation and Engagement Plan

March 2024



Table of Contents

1. Introduction.....	3
1.1 The Project	3
1.2 About Edify Energy	4
2. Community Profile.....	5
2.1 Location	5
2.2 Local Government Authorities (LGA)	6
2.3 State electorate	6
2.4 Federal electorate	6
3. Key Stakeholders.....	7
3.1 Near neighbours.....	7
3.2 Council Representatives	10
3.3 State Government Agencies.....	11
3.4 Traditional Owner Groups.....	11
4. Engagement Protocols and Procedures	11
4.1 Communications management.....	11
5. Activities Undertaken	12
5.1 Consultation Throughout Development.....	12
6. Financial close and NTP activities.....	13
6.1 Financial Close Media Release	13
6.2 Community Update, Supplier Forum and Job Notices	13
7. Ongoing Commitments	14
7.1 Monitoring and Updating the Plan	14
7.2 PR and media.....	14
7.3 Ongoing PR and Media.....	15
7.4 Council Meetings.....	15
8. Media Providers	16
9. Local Venues	16
Appendix A Community Information Booklet.....	17

1. Introduction

1.1 The Project

Edify Energy Pty Ltd (Edify) is preparing to lodge an Environmental Impact Statement (planning application) for the development, construction and operation of the Burroway Solar Farm (the Project) comprising a 100 megawatt (MWac) solar photovoltaic generator, integrated with a 100MW / 400 megawatt-hour (MWh) battery energy storage system (BESS). The Project will be located approximately 17.5 kilometres north of Narromine, in the locality of Burroway, New South Wales (the Site).

Works are proposed across a single property with sole ownership, on land within the Narromine Shire Local Government Areas (LGA). A Planning Application shall be submitted to the New South Wales Department of Planning and Environment (DPE) in H1-2024 as a State Significant Development, referred to as *SSD-55968733*.

Edify is seeking a planning permit for the use and development of the proposal, located within the RU1 Zone, which is prescribed as rural zoning with impacts including:

- A maximum 100 megawatt (MWac) solar energy facility:
- Up to 495 hectares (ha) of fenced solar arrays on single-axis tilt trackers.
- Inverters and substation.

Additional works include:

- Utility installation:
 - Connection to the 132 kilovolt (kV) sub-transmission system that crosses the proposal site.
 - A battery energy storage system (BESS) with a proposed capacity of up to 400MWh (i.e., maximum of 100MW power output for four hours) and comprising of lithium-ion batteries with inverters).
- Road works:
 - Proposed site entry off the Eumungerie Road.

This Community Consultation and Engagement Plan has been prepared to summarise engagement activities undertaken during the planning phase of the project.

This plan is a living document, which is intended to evolve over the life of the Project and will inevitably vary throughout the stages of the Project. It has been developed with consideration of the recommendations and guidance of IAP2 Australasia.

	INFORM	CONSULT	INVOLVE	COLLABORATE	EMPOWER
PUBLIC PARTICIPATION GOAL	To provide the public with balanced and objective information to assist them in understanding the problems, alternatives and/or solutions.	To obtain public feedback on analysis, alternatives and/or decision.	To work directly with the public throughout the process to ensure that public issues and concerns are consistently understood and considered.	To partner with the public in each aspect of the decision including the development of alternatives and the identification of the preferred solution.	To place final decision-making in the hands of the public.
PROMISE TO THE PUBLIC	We will keep you informed.	We will keep you informed, listen to and acknowledge concerns and provide feedback on how public input influenced the decision.	We will work with you to ensure that your concerns and issues are directly reflected in the alternatives developed and provide feedback on how public input influenced the decision.	We will look to you for direct advice and innovation in formulating solutions and incorporate your advice and recommendations into the decisions to the maximum extent possible.	We will implement what you decide.
EXAMPLE TOOLS	<ul style="list-style-type: none"> • Fact sheets • Websites • Open houses 	<ul style="list-style-type: none"> • Public comment • Focus groups • Surveys • Public meetings 	<ul style="list-style-type: none"> • Workshops • Deliberate polling 	<ul style="list-style-type: none"> • Citizen Advisory committees • Consensus building • Participatory • Decision-making 	<ul style="list-style-type: none"> • Citizen juries • Ballots • Delegated • Decisions

Figure 1 - IAP2 Public Participation Spectrum

This document will be managed by Edify's project manager, which will evolve as the project matures. In turn, this document will guide community consultation activities during the post-approval (pre-construction), construction and operation phases of the Project.

1.2 About Edify Energy

Edify is a proudly 100% Australian owned renewable energy and storage company, leading the industry in the deployment and operation of new energy generation, storage and grid infrastructure to support Australia's energy transition.

Delivering more than \$1.7 billion of investment in Australia, Edify has successfully overseen the development, structuring, financing and construction of 773MWp of utility scale solar projects producing enough electricity to power over 281,000 Australian homes. In addition, Edify has designed and delivered 360MW / 720MWh of battery energy storage, providing system strength to the grid and capable of powering 330,000 homes for up to 2 hours.

Edify is continuing to develop a large portfolio of renewable energy, storage and hydrogen projects and is committed to creating and delivering innovative clean green energy solutions.

Edify is involved in the full lifecycle of renewable energy and storage projects, including greenfield development, project structuring and financing, construction management and long-term operational asset management.

Edify ensures its interests are aligned as closely as possible with those of the local community and other project stakeholders.

2. Community Profile

Understanding the makeup and values of the community is essential to finding effective ways to reach the community as well as appreciating ways that the project may impact the community. This section provides a broad overview of Narromine and Burroway, as the notable locations within the Narromine Shire Local Government Authorities (LGA) and the political profile of the region.

2.1 Location

The Project is located off Eumungerie Road, approximately 17.5km north of the township of Narromine in the Central West & Orana Renewable Energy Zone. The Project will be constructed on approximately 495 hectares of land, with a connection into the Essential Energy's 132kV overhead transmission line (#94W/1).

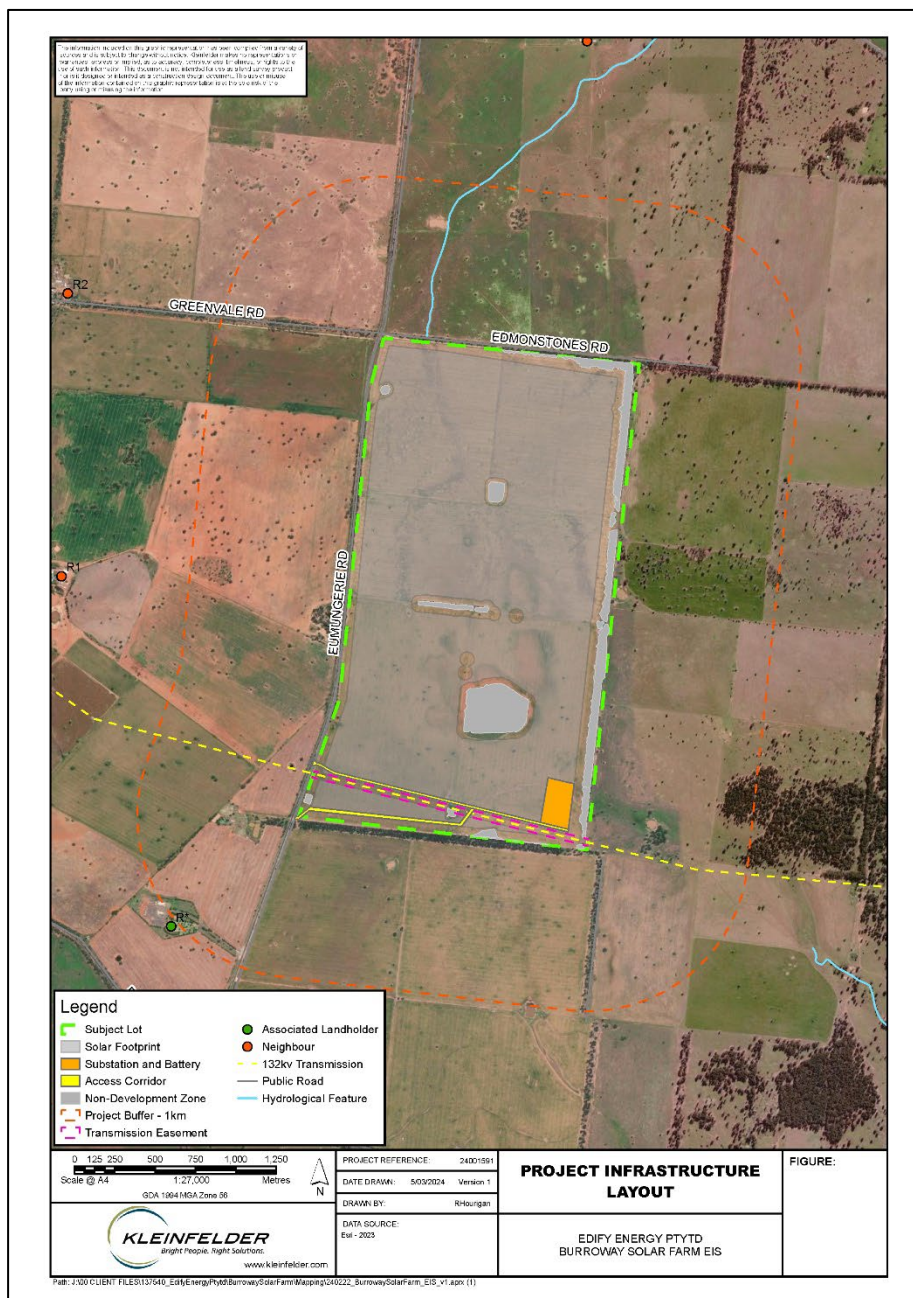


Figure 2 Partial Site layout showing location of the project entrance and northern construction area

2.2 Local Government Authorities (LGA)

The Project sits within the Narromine Shire Council LGA which covers an area of 5,264 square kilometres. The principal city within the Narromine Shire is Narromine itself. In addition, the population of the LGA is 6,360 according to the 2021 Census.

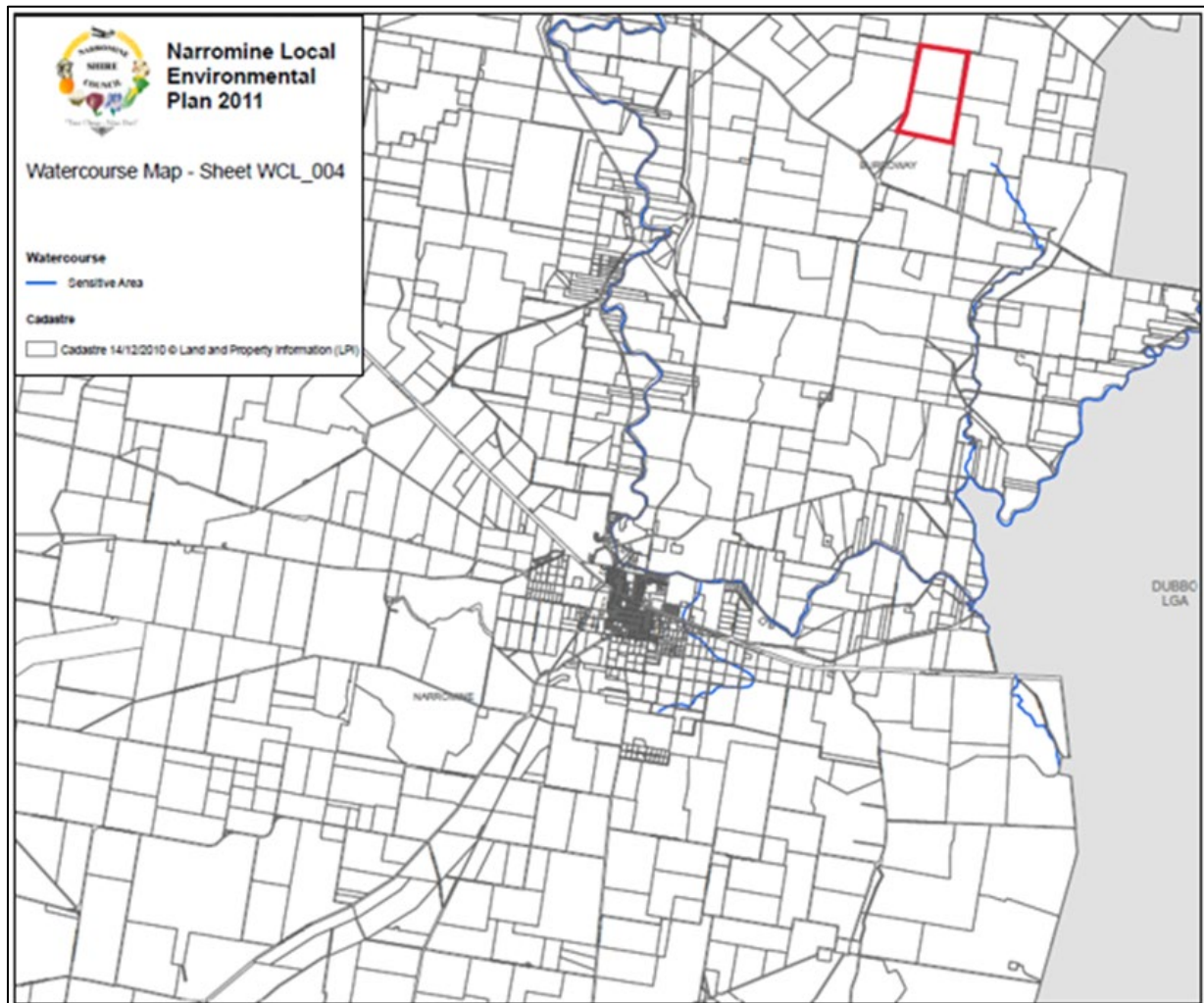


Figure 3 - Project Layout in relation to LGA Boundary

2.3 State electorate

The Project sits within the NSW State electorate of Dubbo, which includes the districts of Dubbo, Wellington and Mudgee, taking in the areas throughout the Central West and Orana region.

The Dubbo seat is currently held by Dugald Saunders MP (National Party) and holds the position of the 14th Leader of the NSW Nationals Party and was previously the Minister for Agriculture (2021-2023).

2.4 Federal electorate

The federal electorate of Parkes covers an area of 393,413sq km in the central western region of NSW and is the largest electorate in the State. The electorate, adjoins the borders of the New England electorate in the East, Farrer electorate to the south, and the Calare and Riverina electorate to the south-east. The division consists of City Councils of Broken Hill, and Dubbo and the Shire Councils of Central Darling, Cobar, Lachlan, Bogan, Bourke,

Brewarrina, Walgett, Moree Plains, Narrabri, Coonamble, Warren, Narromine, Gilgandra, Warrumbungle, Gunnedah and part of Gwydir.

The seat of Parkes is held by the Hon. Mark Coulton MP (National Party) and holds the position of Chief Nationals Whip in the House of Representatives and is the Deputy Chair of Standing Committee on Appropriations and Administration. He has held the seat since 2007.

3. Key Stakeholders

3.1 Near neighbours

Edify corresponds with all community members within 3,700m of the project boundary, totalling nine residences, with the closest residence located approximately 1,795m from the project boundary. Edify's project manager has established correspondence between all residents within 3.7km and maintains efforts to engage with all residents within 5km of the project boundary. Edify's Project Manager also maintains a Community Engagement Registry for all engagements. The full details of this community register can be provided upon request.

A summary of community members that reside within 3,700m of the project boundary is provided below, with Edify maintaining consistent dialogue with these key stakeholders. There will be ongoing consultation with all members of the local community during the pre-lodgement and post-approval (pre-construction) phase which will continue through to the construction phase. Various forms of engagement will include letterbox drops, telephone conversations, house visits and community engagement sessions.

There has been ongoing consultation (January 2023 – March 2024) with the local community, plus additional engagement activities detailed in Section 4 of this report. During the recent community consultation in 2024, Edify's project managers discussed technical details of the project plans relating to the forthcoming Planning Application. Representatives from Narromine Shire Council also shared a conference call with Edify in December 2023, in addition to a pre-lodgement in-person meeting held at Council's office in March 2024..

In addition to these workshops held in the local community (see Section 4), during 2023 and Q1 2024, Edify's project managers established and maintain direct correspondence with the proximate residents, advising them how to review and submit feedback on the proposal, particularly during the 'public exhibition' phase of the planning application.

Consultation with these near neighbours, local community and business stakeholders will continue during post-approval (pre-construction) phase of the Project and throughout the construction and operation of the facility.

Receiver (R#)	Owner	Address	Telephone	Email	Distance from Project boundary
R1	<i>Anonymous – see Edify for details</i>	2151 Eumungerie Road, Burroway, NSW 2821	<i>Anonymous – see Edify for details</i>		1,795
R2	<i>Anonymous – see Edify for details</i>	195 Greenvale Road, Burroway, NSW 2821	<i>Anonymous – see Edify for details</i>		1,962
R3	<i>Anonymous – see Edify for details</i>	211 Edmonstones Road, Burroway, NSW 2821	<i>Anonymous – see Edify for details</i>		2,002
R4	<i>Anonymous – see Edify for details</i>	2672 Eumungerie Road, Burroway, NSW 2821	<i>Anonymous – see Edify for details</i>		2,134
R5	<i>Anonymous – see Edify for details</i>	Dubbo-Burroway Road, Burroway, NSW 2821	<i>Anonymous – see Edify for details</i>		2,322

Receiver (R#)	Owner	Address	Telephone	Email	Distance from Project boundary
R6	<i>Anonymous – see Edify for details</i>	2610 Burroway Road, Burroway, NSW 2821	<i>Anonymous – see Edify for details</i>		2,426
R7	<i>Anonymous – see Edify for details</i>	1776 Eumungerie Road, Burroway NSW 2821	<i>Anonymous – see Edify for details</i>		2,602
R8	<i>Anonymous – see Edify for details</i>	1743 Eumungerie Road, Burroway NSW 2821	<i>Anonymous – see Edify for details</i>		3,137
R9	<i>Anonymous – see Edify for details</i>	512 Cobboco Road, Burroway NSW 2821	<i>Anonymous – see Edify for details</i>		3,685
...*

**Edify's Project manager maintains engagement with near-neighbours on a regular basis, which extends beyond this summary of neighbours within 3,700m of the project boundary. This is summarised to provide indicative detail on the various methods of correspondence and means of engagement. Edify's ongoing engagement focuses particularly relating to key project milestones and 'nuisance activities' such as the potential commencement of the application's public exhibition, in addition to providing estimates on future construction noise and over-dimensional vehicular deliveries, etc. The complete community register can be provided upon request.*

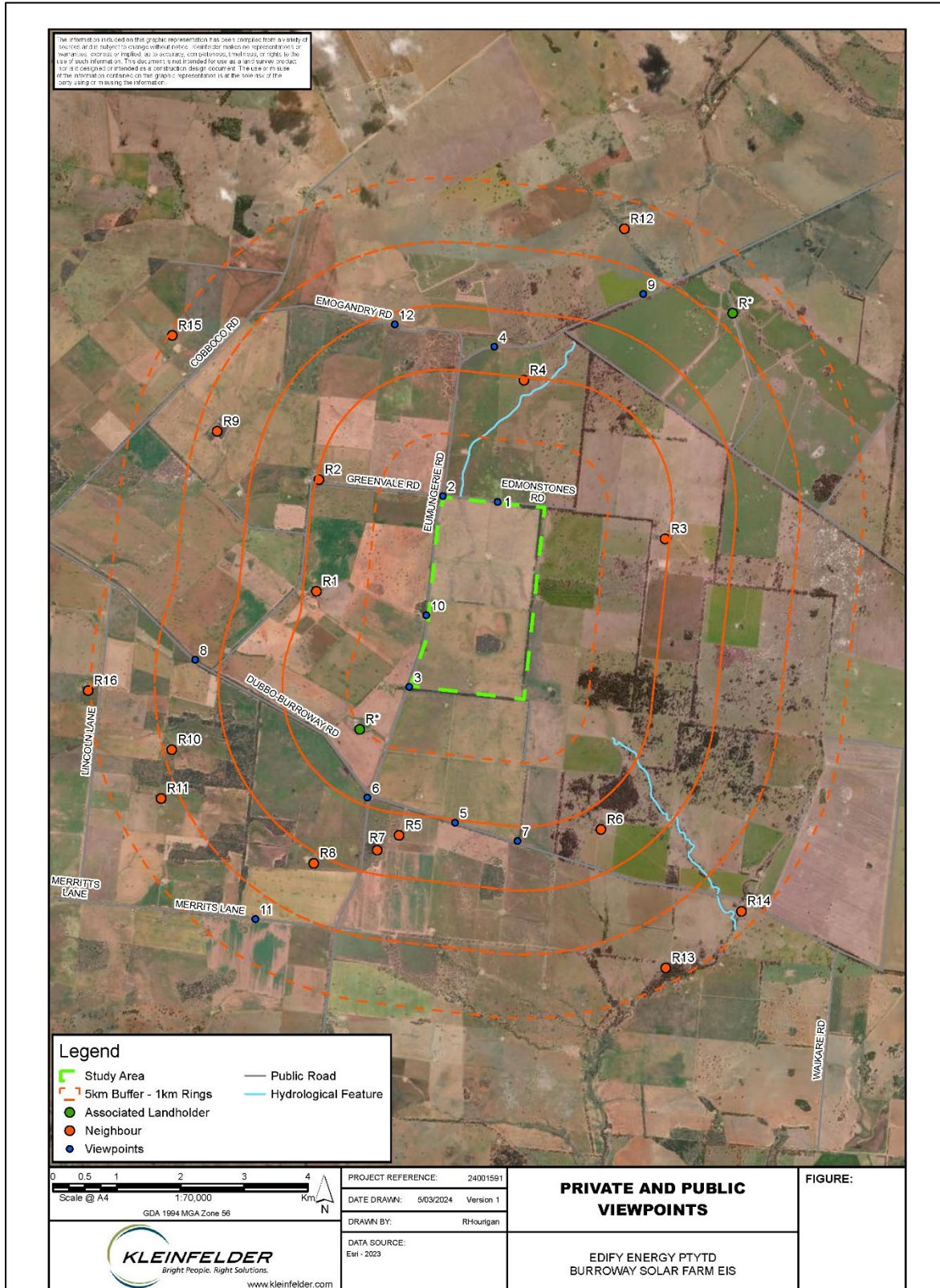


Figure 4 Sensitive receivers within 5km to the site

3.2 Council Representatives

Whilst the consent authority responsible for considering the Planning Application is DPE, Narromine Shire Council will nonetheless continue to play a critical stakeholder role, which Edify's project manager and delivery team continue to engage with. In the upcoming public exhibition and post-approval (pre-construction) phase of the project, Edify will be collaborating further with Council during the preparation of the project's Workforce Accommodation Strategy and Local Participation Plan. Further, Council must also be consulted during the preparation of the Traffic Management Plan (TMP) and Construction Environment Management Plan (CEMP).

3.2.1 Narromine Shire Council

Council Offices		
118 Dandaloo Street, Narromine, NSW 2821		

Councillor	Telephone	Email
Craig Davies (Mayor)	0429 887 707	cr.cdavies@narromine.nsw.gov.au
Dawn Collins	0407 891 745	cr.dcollins@narromine.nsw.gov.au
Adine Hoey	0427 372 747	cr.ahoey@narromine.nsw.gov.au
Casey Forrester	0418 115 091	cr.cforrester@narromine.nsw.gov.au
Diane Beaumont	0431 331 524	cr.dbeaumont@narromine.nsw.gov.au
Ewan Jones	0419 607 381	cr.ejones@narromine.nsw.gov.au
Lachlan Roberts	0427 804 305	cr.lroberts@narromine.nsw.gov.au
Les Lambert	0407 314 537	cr.llambert@narromine.nsw.gov.au

Council Official	Responsibility	Telephone
Jane Redden	General Manager	02 6889 9999
Barry Bonthuys	Director Finance and Corporate Strategy	
Melanie Slimming	Director Infrastructure and Engineering Services	
Marion Truscott	Director Governance	
Phil Johnston	Director Community and Economic Development	
Emma Yule	Manager Planning	02 6889 9999 eyule@narromine.nsw.gov.au
Jordan Richardson	Manager Engineering Services	02 6889 9999 jrichardson@narromine.nsw.gov.au

3.3 State Government Agencies

NSW DPE have been consulted throughout the planning process, particularly since the project's Scoping Report was finalised in February 2023. Close engagements will continue throughout the lodgement and public exhibition phase, which is scheduled for mid-2024. During the post-approval (pre-construction) phase, DPE will be required to approve the various Construction Management Plans required to satisfy the conditions of consent prior to construction commencing.

3.3.1 New South Wales Department of Planning and Environment (DPE)

Contact	Responsibility	Address	Telephone	Email
Nestor Tsambos	Team Leader, Energy Assessments	4 Parramatta Square, 12 Darcy Street Parramatta NSW 2150	02 9274 6348	nestor.tsambos@dpie.nsw.gov.au
Megan Ramsdale	Planning Officer, Energy Assessments		02 9407 2133	Megan.ramsdale@planning.nsw.gov.au
Iwan Davies	Director, Energy		02 9274 6296	Iwan.davies@planning.nsw.gov.au

3.4 Traditional Owner Groups

The local indigenous community is represented by various Registered Aboriginal Parties (RAPs), such as the Narromine Local Aboriginal Land Council (LALC), Gallangabang Aboriginal Corporation, Girragirra Murun Aboriginal Corporation, Wiradjuri Council of Elder and eight other parties noted in the Aboriginal Cultural and Heritage Assessment Report (ACHAR). As such, Edify will continue to conduct broad engagement with the RAPs and government agency parties throughout the region. Edify will continue the engagement activities and fulfill the recommendations described in the ACHAR, such as the preparation of an Aboriginal Cultural and Heritage Management Plan (ACHMP) during the post-approval (pre-construction) phase.

4. Engagement Protocols and Procedures

Community engagement with stakeholders will continue to be undertaken using five methods as follows:

1. continued direct contact with neighbours;
2. the establishment of an online portal;
3. regular meetings to be scheduled at various Project milestones;
4. newsletters to coincide with meetings; and
5. open days with the public and school groups once operations have commenced.

As a general principal, all outward communications will include a description of how to access the latest information on the project so stakeholders can maintain an up-to-date understanding of progress and activities.

4.1 Communications management

4.1.1 Project Infoline, website and email

A project website has been established ahead of any construction activities with a direct link to the Edify Energy homepage. See link: <https://edifyenergy.com/project/burroway/>.

The website contains project-specific contact details including a dedicated project hotline with contact name project email address.

4.1.2 Project contact database

A contact database has been used as the main reporting and monitoring tool for project communications. The outcomes of any contacts will be used to update ongoing stakeholder management information within this plan, to:

- record community and stakeholder contacts and interaction;
- record the issue and distribution of letterbox drops, project updates and notifications;
- act as a management tool for recording complaints, enquiries, issues and responses; and
- provide monthly reports on stakeholder and community contact and issues management.

4.1.3 Distributing information about the project

Information will be distributed via face-to-face meetings, phone calls or electronically from a project specific email address.

4.1.4 Communicating with stakeholders about the potential impacts of the project

Messaging to stakeholders needs to be consistent and aligned with the messages outlined in this document.

4.1.5 Encouraging community and stakeholder feedback

Community and stakeholder feedback has been encouraged and the feedback email address and information line will be made freely available at any public interaction.

Where feedback is received and the contact details of the person leaving feedback are known, confirmation and, where appropriate, a response to that feedback should be made within 14 days.

4.1.6 Taking, recording and responding to community feedback, enquiries or complaints

All complaints received will be investigated and responded to within three business days, where practical. At a minimum, confirmation of receipt of any complaint should be made within 48 hours and a response provided within 10 days.

For any complainant who provides their details, a written response to the complaint will be provided within 14 days.

A record of complaints will be made and reported on at an aggregate level.

5. Activities Undertaken

5.1 Consultation Throughout Development

5.1.1 Near Neighbours

Edify has contacted and met with majority of neighbours within 3.7km of the project boundary, conducting various in-person meetings, plus ongoing telephone and email correspondence.

Edify has engaged with the local community, government bodies and consulted with neighbours by way of:

- Email introduction (17 March 2022) and in-person meeting with Narromine Shire Council, providing project detail overviews on 23 March 2022

- Email introduction (10 January 2023) and online meeting with federal member, Hon. Mark Coulton MP on 24 January 2023
- Email introduction (10 January 2023) and online meeting with state member, Hon. Dugald Saunders on 31 January 2023
- Email and telephone introductions made to all neighbouring residents within 3.2km of the project on 19 January 2023 and 9 February 2023
- In-person meetings in Burroway, NSW for various residents within 3.7km of the project on 16 February 2023
- Online progress meeting with Narromine Shire Council on 16 November 2023
- Pre-lodgement engagements, including door-knocking / letter drops in Burroway NSW, for residents within 3.7km of the project area, advising details on the public exhibition process and discussing specific details of the project plans on 20 and 21 March 2024
 - Local residents were provided with an information booklet regarding the project and were invited to discuss their views on the project. A copy of the information booklet provided to residents is provided in Appendix B, which contains a QR code to Edify's project website and the NSW Major Projects Portal's project link.
- In-person, pre-lodgement engagements with Narromine Shire Council on 20 March 2024
- Multiple phone calls with various stakeholders including neighbours, local community members and authorities throughout the planning phase of the development and through the formal statutory notice period.

6. Financial close and NTP activities

The following activities are contemplated to occur at or around the time of financial close.

6.1 Financial Close Media Release

A media statement will be released with key project partners to announce the financial close of the Project.

Edify Energy publishes all relevant press releases and links to partner media on its website (www.edifyenergy.com). Edify Energy shall also notify associated media and communications channels including but not limited to RenewEconomy, the Clean Energy Council, the local paper(s), and collaborate with project partners who are perhaps better connected in respect of the broader press.

Edify Energy notified the Council, local MPs, the NSW Renewable Energy Advocate and related entities and take advantage of their own media and communications initiatives.

As always, Edify Energy personnel will seek to maximise coverage leveraging their own networks on LinkedIn, X, Instagram and Facebook.

6.2 Community Update, Supplier Forum and Job Notices

A formal presentation communicating key facts and project timelines would be more suitable than a drop-in session, and the event should be combined with a supplier forum, to attract and inform local businesses that may wish to participate in the services and various delivery aspects of the construction and operation of the project.

It is generally standard practice to hold a “supplier forum” in the local community with a view to maximising local content of project delivery. It would be most efficient to hold a single community update forum and supplier forum as a combined event.

The Industry Capability Network (ICN) - an independent organisation supported by the NSW Government – is anticipated to assist Edify facilitate the event, and issue invites to relevant local suppliers and service providers from its own database of industry contacts. Edify Energy’s own “database” of interested individuals and suppliers should be included on the invite list.

The event should be held jointly by Edify Energy and EPC Contractor, and the latter should be primarily responsible for fielding employment and supplier enquiries.

EPC Contractor should have in place prior to the forum, an appropriate online portal/body-hire agency which can be advertised as the means to registering an interest.

Council may also have the capability to advertise vacancies and tenders on its own website on behalf of the Project.

7. Ongoing Commitments

The following are contemplated throughout the post-approval (pre-construction), construction and commercial operation phases of the Project.

7.1 Monitoring and Updating the Plan

The plan will be monitored on an ongoing basis by the Edify project execution team and will be updated as required to ensure the document provides an accurate reflection of community consultation activities and outcomes as the project progresses. Once the pre-construction phase commences, Edify’s project execution team will report regularly throughout construction to Edify’s internal management, the project’s equity partner and lenders.

Other regular reporting will be undertaken as required by our conditions of consent and any other relevant approvals. Refer to section 6.3 for details of our communication to community regarding key project milestones.

7.2 PR and media

7.2.1 Project Website

Irrespective of any media and PR requirements, it is good practice to maintain a project website (<https://edifyenergy.com/project/burroway/>) which, throughout construction, will contain the following and be kept up-to-date:

- project plans;
- planning permit conditions
- key milestones;
- how suppliers and local members can participate in the project;
- a complaints register; and
- how complaints about the development can be made;

7.2.2 Media

Otherwise from a PR perspective, the website should ideally be kept up to date with:

- Key media announcements and press releases (e.g., financial close, commencement of construction, energisation/commissioning, COD, etc.);
- Regular images and/or time-lapse photography through construction; and
- Notices of community events, sponsorships etc.

7.3 Ongoing PR and Media

The following represents potential milestones for ongoing PR and media throughout Project construction:

Milestone	Funding Agreement Milestone	Edify Energy website & social media	Other stakeholder websites	General media release	Local press	Site event	Landlord/ neighbour updates
Financial Close	Notice to Proceed	✓	✓	✓	✓		✓
EPC mobilisation	NTP (shortly after)	✓	✓		TBC		✓
Ground-breaking	NTP (shortly after)	✓	✓		✓	✓	✓
First battery delivery	Delivery of Major Equipment	✓			TBC	TBC	
School visits	N/A	✓			✓	✓	
Final battery delivery	Delivery of Major Equipment				TBC	TBC	
Transformer delivery	Delivery of Major Equipment				✓		✓
Commence commissioning	Completion and Connection of the Project	✓		✓	✓	✓	
First generation	Completion and Connection of the Project	✓		✓	✓		
Full output	Completion and Connection of the Project	✓		✓	✓		
Commercial operation	Commercial Operations Commenced	✓	✓	✓	✓	✓	✓

7.4 Council Meetings

It would be prudent to keep Council aware of key milestones, particularly where they relate to approvals and certification requirements, such as access road works/inspections, accommodation plans, management plan sign-off (e.g. TMP), over-size deliveries, issuance of construction and occupation certificates to DPE, etc, so that Council is informed and expedient in its approvals. This can be achieved via ad-hoc email/telephone communication with Emma Yule, Manager of Planning Services.

It may also be possible to request Council to submit general community updates on behalf of the Project, via its website and social media platforms.

8. Media Providers

Project partners and other stakeholders will likely have their preferred providers of media services, however Floodlight (formerly NewEra) Media is particularly well versed in providing media content for renewables projects, specialising in photography, time-lapse, video production and aerial imagery. Existing clients, in addition to Edify, include AGL, Neoen and Tesla.



<https://floodlightmedia.com.au/>

9. Local Venues

The following local venues would be suitable for hosting events and forums in the local community:

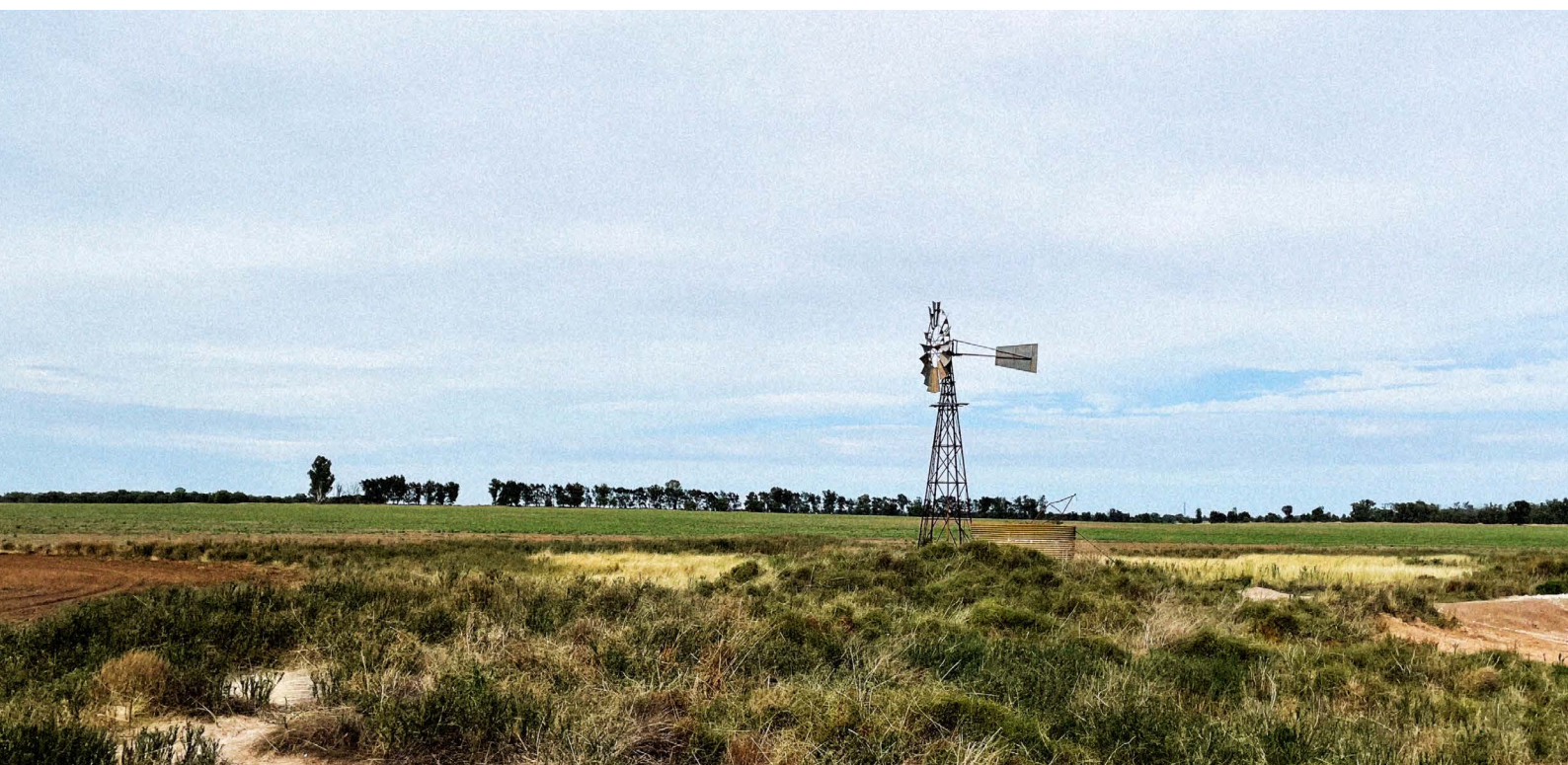
Venue	Address	Telephone	Email	Capacity	Licenced	Catering
Narromine United Services Memorial Club*	58 Dandaloo Street, Narromine NSW 2821	02 6889 4288	admin@usmc.com.au	~800	Yes	Yes

* Contains kitchen facilities

Appendix A Community Information Booklet

Burroway Solar Farm

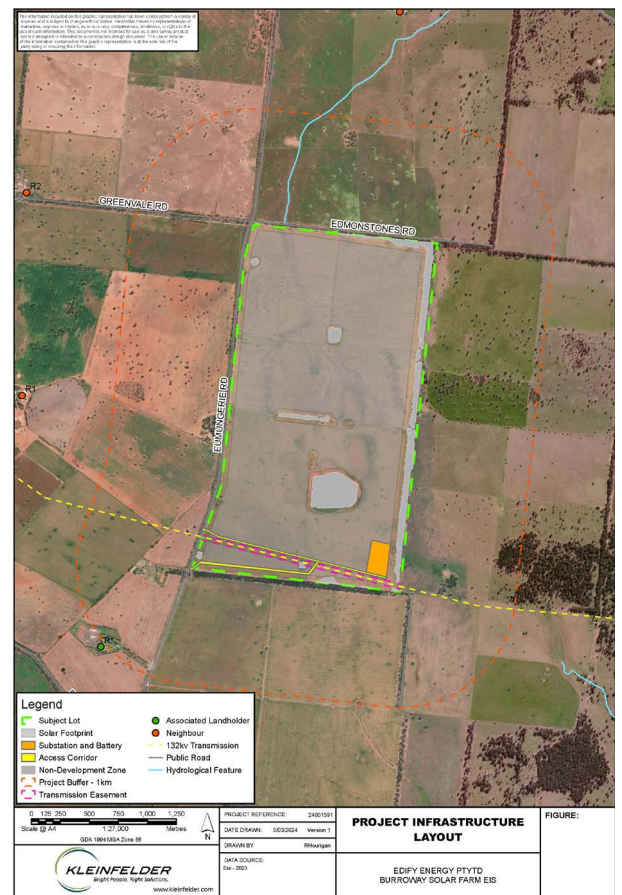
Renewable energy for a bright future



The **Burroway solar farm** is located north of Narromine and west of Dubbo, NSW, in the Central West & Orana Renewable Energy Zone, on traditional Wiradjuri country. The development hosts Essential Energy's 132kV transmission network. Access is via Eumungerie Road, Burroway. The 470 hectare development site has the potential to accommodate up to 120MWp of solar photovoltaic electricity generation, and up to 100MW/400MWh of energy storage in the form of an integrated battery.



Scan the QR code to learn more about the project on our website





Why Burroway, NSW?

The Burroway site was chosen by Edify Energy because of:

- Access to large areas of flat, open terrain historically used for cropping and grazing.
- Proximity to Essential Energy's 132kV transmission line, reducing the need for lengthy and costly overhead transmission line easements.
- Excellent solar resource.
- Good access to the site, via Eumungerie Road, which allows suitable supply of plant and equipment during construction.

Project benefits

The development, construction and multi-decade operation of Burroway solar farm will create the following benefits:

- **Employment opportunities**, with an anticipated peak workforce of approximately 250 personnel during construction and about 7 full-time employees during operations.
- Potential for **direct and indirect investment** into the Narromine and Dubbo region.
- Once complete, produce enough renewable power to supply around **40,000 homes** each year for 30 years.
- Contributes to the NSW Government **Net Zero Emissions Target** by 2050.
- Through the Voluntary Planning Agreement with the Narromine Shire Council, contributes to **local community programs**.

Who is Edify?

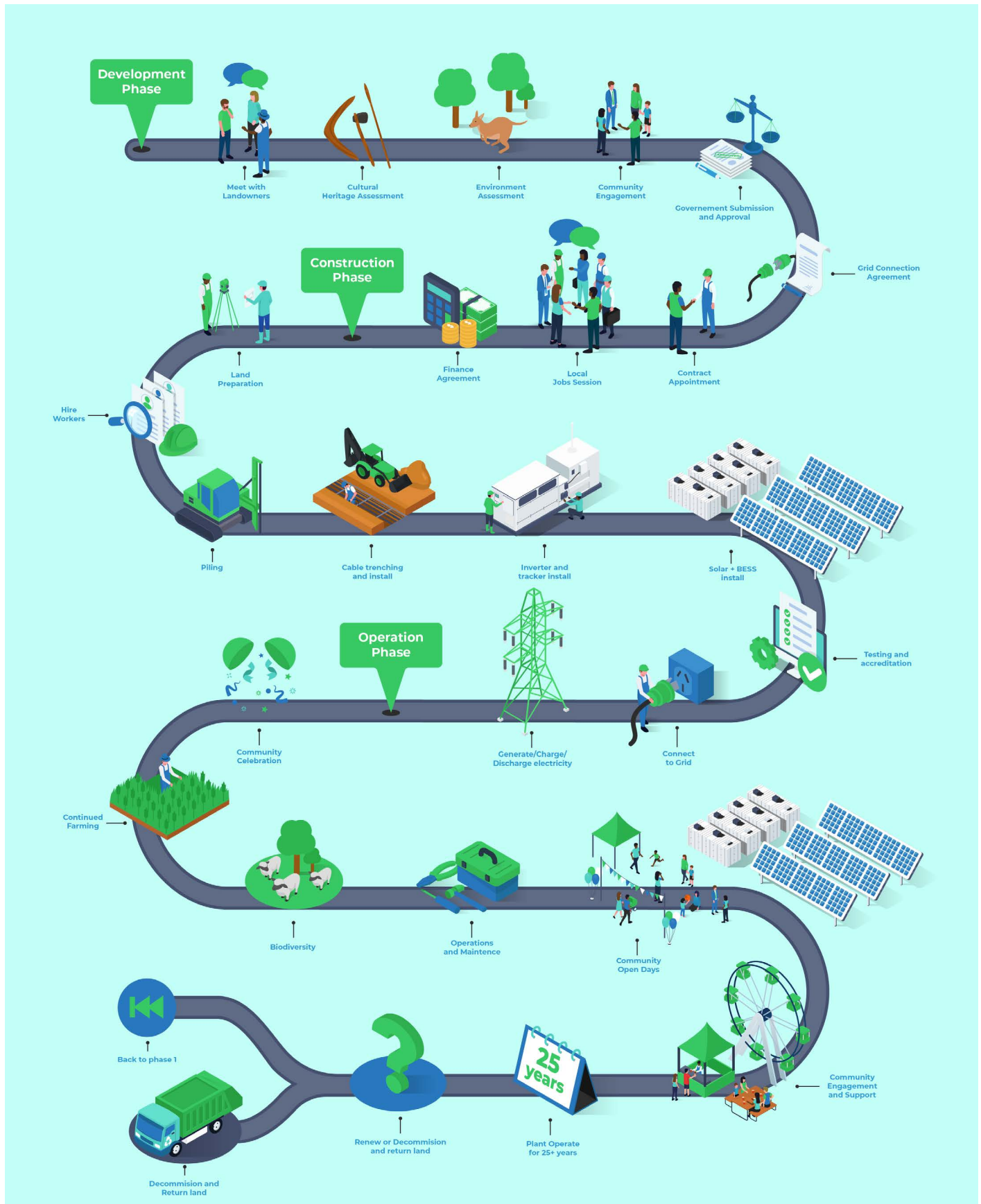
Edify is a proudly 100% Australian owned renewable energy and storage company, leading the industry in the deployment and operation of new energy generation, storage and grid infrastructure to support Australia's energy transition.

Delivering more than \$2 billion of investment in Australia, Edify has successfully developed and financed over 1 GW of utility-scale solar farms and battery energy storage systems and, in addition to projects currently in construction, is managing the operations of 6 solar farms and 4 battery energy storage systems that it has developed, financed and constructed.



Life Cycle OF A SOLAR FARM

What are the stages of building a solar farm, and what to expect from each stage?





Benefits for the local community

Socio-Economic Development

- > Approx. 30% of the capital deployed is into the accounts of local trades, laborers, suppliers and services.
- > An injection of diversity into existing local industry, as well as stimulating new and alternative employment opportunities.

Employment & Skills Creation

- > In the region of 250 jobs are created during construction, with strong emphasis on local content.
- > Throughout the 30 year term of operation and management, up to 7 site roles are required plus many additional support services sourced locally.
- > There are opportunities for TAFE apprenticeships, engineering cadetships and other high skilled training.

Community Participation

- > Local initiatives and sponsorship projects are supported long after the last post is in the ground.
- > Schools and educational programs, both on site and in the classroom ignite the next generation.



Stay up to date on the NSW Government's Planning Portal with the Environmental Impact Statement to be lodged in March 2024.



Level 1, 34-35 South Steyne
Manly NSW 2095
+61 2 8790 4000
hello@edifyenergy.com
www.edifyenergy.com

Appendix B Consultation Records

From: [Patrick Dale](#)
To: [Emma Yule](#); mslimming@narromine.nsw.gov.au; jcleasby@narromine.nsw.gov.au
Subject: Burroway Solar Farm - Traffic Impact Assessment (Advanced Copy)
Date: Wednesday, 27 March 2024 3:09:25 PM
Attachments: [image892302.png](#)
[image250831.png](#)
[image792144.png](#)
[image647884.png](#)
[image261926.png](#)
[image268078.png](#)

Good afternoon Melanie, Emma, James,

Thanks again for meeting me last Wednesday.

As promised in the meeting, please see [this Sharefile Link](#), which provides you advanced copies of the Burroway Solar Farm's Traffic Impact Assessment and the associated SIDRA files.

I'd be happy to discuss these details with you following the Easter break, or once the EIS enters public exhibition in April.

Best wishes,

Patrick Dale

D +61 2 8790 4044

M +61 487 177 136



Edify Energy
Level 3, 201 Charlotte Street
Brisbane QLD 4000
Turrbal Country

www.edifyenergy.com

This email may contain privileged and confidential information. If you are not the named intended recipient, you must not copy, distribute or take any action in reliance on it. If you have received this email in error, please notify the sender immediately.

From: [Patrick Dale](#)
To: [Emma Yule](#)
Subject: RE: Burroway Solar Farm - Q1 2024 Update
Date: Monday, 11 March 2024 11:46:33 AM
Attachments:

Thanks Emma.

Patrick Dale

D +61 2 8790 4044
M +61 487 177 136



Edify Energy
Level 3, 201 Charlotte Street
Brisbane QLD 4000
Turrbal Country

www.edifyenergy.com

This email may contain privileged and confidential information. If you are not the named intended recipient, you must not copy, distribute or take any action in reliance on it. If you have received this email in error, please notify the sender immediately.

From: Emma Yule <eyule@narromine.nsw.gov.au>
Sent: Monday, March 11, 2024 10:58 AM
To: Patrick Dale <Patrick.dale@edifyenergy.com>
Subject: RE: Burroway Solar Farm - Q1 2024 Update

Hi Patrick

The afternoon of 20th may suit best for me.
Will forward and check other staff availability.

Regards

Emma Yule

Manager Planning
Narromine Shire Council
P.O. Box 115 Narromine NSW 2821

P: [02 6889 9999](tel:0268899999)

E: eyule@narromine.nsw.gov.au

W: www.narromine.nsw.gov.au | www.narromineregion.com.au

EMAIL DISCLAIMER: This e-mail and any attachment to it are intended only to be read or used by the named addressee. It is confidential and may contain legally privileged information. No confidentiality or privilege is waived or lost by any mistaken transmission to you. If you receive this e-mail in error, please immediately delete it from your system and notify the sender. You must not disclose copy or use any part of this e-mail if you are not the intended recipient. Narromine Shire Council (NSC) is not responsible for any unauthorised alterations to this e-mail or attachment to it.

Views expressed in this message are those of the individual sender and are not necessarily the views of Narromine Shire Council.

If correspondence includes personal information, please refer to [Council's Privacy Management Plan](#)

This email may be made available to third parties in accordance with the Government Information (Public Access) Act 2009.

From: Patrick Dale <Patrick.dale@edifyenergy.com>

Sent: Monday, 11 March 2024 10:40 AM

To: Emma Yule <eyule@narromine.nsw.gov.au>

Cc: Phil Johnston <pjohnston@narromine.nsw.gov.au>

Subject: RE: Burroway Solar Farm - Q1 2024 Update

CAUTION: This email originated from outside of Narromine Shire Council. Do not click links or open attachments unless you recognise the sender and know the content is safe.

Good morning Emma,

Just following up on last week's mail, regarding the pre-lodgement engagements we have planned in Burroway/Narromine next week (20-21st March) [~~not 22nd as previously advised~~].

I am hopeful you or your colleagues are available to meet during this time, where I can provide updates on the EIS, plus advanced copies of any technical reports you wish to review.

In addition, I hope to discuss the VPA with Council once again, now that the Capital Investment Valuation Report has been finalised (see **attached**).

I look forward to hearing from you.

Best wishes,

Patrick Dale

D [+61 2 8790 4044](tel:+61287904044)

M [+61 487 177 136](tel:+61487177136)



Edify Energy
Level 3, 201 Charlotte Street
Brisbane QLD 4000
Turrbal Country

www.edifyenergy.com

From: Patrick Dale <Patrick.dale@edifyenergy.com>
Sent: Wednesday, March 6, 2024 1:29 PM
To: Emma Yule <eyule@narromine.nsw.gov.au>
Subject: RE: Burroway Solar Farm - Q4 2023 Update

Good morning Emma,

I hope you are well.

I'm pleased to advise we are on track to lodge the Burroway Solar Farm EIS by end-March 2024. Prior to this, I am planning to visit Narromine and meet with the local residents that are proximate to the project area, to undertake pre-lodgement engagement efforts. I am hopeful you and Council will also be available to meet sometime between **20-22nd March?**

We can also provide you advanced copies of the EIS (or specific technical studies) prior to this, should you wish to conduct a pre-lodgement review.

I look forward to hearing from you.

Best wishes,

Patrick Dale

D [+61 2 8790 4044](tel:+61287904044)
M [+61 487 177 136](tel:+61487177136)



Edify Energy
Level 3, 201 Charlotte Street
Brisbane QLD 4000
Turrbal Country

www.edifyenergy.com

This email may contain privileged and confidential information. If you are not the named intended recipient, you must not copy, distribute or take any action in reliance on it. If you have received this email in error, please notify the sender immediately.

From: Emma Yule <eyule@narromine.nsw.gov.au>
Sent: Tuesday, November 7, 2023 2:37 PM
To: Patrick Dale <Patrick.dale@edifyenergy.com>
Subject: RE: Burroway Solar Farm - Q4 2023 Update

Morning would suit better
thanks

Regards

Emma Yule
Manager Planning

Narromine Shire Council
P.O. Box 115 Narromine NSW 2821
P: [02 6889 9999](tel:0268899999)
E: eyule@narromine.nsw.gov.au
W: www.narromine.nsw.gov.au | www.narromineregion.com.au



EMAIL DISCLAIMER: This e-mail and any attachment to it are intended only to be read or used by the named addressee. It is confidential and may contain legally privileged information. No confidentiality or privilege is waived or lost by any mistaken transmission to you. If you receive this e-mail in error, please immediately delete it from your system and notify the sender. You must not disclose copy or use any part of this e-mail if you are not the intended recipient. Narromine Shire Council (NSC) is not responsible for any unauthorised alterations to this e-mail or attachment to it.

Views expressed in this message are those of the individual sender and are not necessarily the views of Narromine Shire Council.

If correspondence includes personal information, please refer to [Council's Privacy Management Plan](#)

This email may be made available to third parties in accordance with the Government Information (Public Access) Act 2009.

From: Patrick Dale <Patrick.dale@edifyenergy.com>

Sent: Tuesday, 7 November 2023 2:52 PM

To: Emma Yule <eyule@narromine.nsw.gov.au>

Subject: RE: Burroway Solar Farm - Q4 2023 Update

CAUTION: This email originated from outside of Narromine Shire Council. Do not click links or open attachments unless you recognise the sender and know the content is safe.

Hi Emma,

I'll share an invitation for Thursday 16th. Would you prefer 10am (AEDT)? Alternatively, 3:30pm (AEDT)?

Thanks again,

Patrick Dale

D [+61 2 8790 4044](tel:+61287904044)

M [+61 487 177 136](tel:+61487177136)



Edify Energy
Level 3, 201 Charlotte Street
Brisbane QLD 4000
Turrbal Country

www.edifyenergy.com

This email may contain privileged and confidential information. If you are not the named intended recipient, you must not copy, distribute or take any action in reliance on it. If you have received this email in error, please notify the sender immediately.

From: Emma Yule <eyule@narromine.nsw.gov.au>

Sent: Tuesday, November 7, 2023 8:24 AM

To: Patrick Dale <Patrick.dale@edifyenergy.com>

Subject: RE: Burroway Solar Farm - Q4 2023 Update

Hi Patrick

Phil and I would be unavailable on 14th, 17th and 20th if you can work around those dates.

Regards

Emma Yule

Manager Planning

Narromine Shire Council

P.O. Box 115 Narromine NSW 2821

P: 02 6889 9999

E: eyule@narromine.nsw.gov.au

W: www.narromine.nsw.gov.au | www.narromineregion.com.au



EMAIL DISCLAIMER: This e-mail and any attachment to it are intended only to be read or used by the named addressee. It is confidential and may contain legally privileged information. No confidentiality or privilege is waived or lost by any mistaken transmission to you. If you receive this e-mail in error, please immediately delete it from your system and notify the sender. You must not disclose copy or use any part of this e-mail if you are not the intended recipient. Narromine Shire Council (NSC) is not responsible for any unauthorised alterations to this e-mail or attachment to it.

Views expressed in this message are those of the individual sender and are not necessarily the views of Narromine Shire Council.

If correspondence includes personal information, please refer to [Council's Privacy Management Plan](#)

This email may be made available to third parties in accordance with the Government Information (Public Access) Act 2009.

From: Patrick Dale <Patrick.dale@edifyenergy.com>

Sent: Monday, 6 November 2023 3:44 PM

To: Emma Yule <eyule@narromine.nsw.gov.au>; Phil Johnston <pjohnston@narromine.nsw.gov.au>

Subject: FW: Burroway Solar Farm - Q4 2023 Update

CAUTION: This email originated from outside of Narromine Shire Council. Do not click links or open attachments unless you recognise the sender and know the content is safe.

Hi Emma, Phil,

I hope you're both well.

Since we spoke in September regarding Narromine Energy Storage System, I was also hoping to update you and Council regarding our Burroway Solar Farm proposal.

As outlined below, we anticipate submitting the EIS around March 2024 and would like to share a brief online presentation with you, to ensure you are across the latest progress.

Can you please suggest some availabilities to share a discussion in the next fortnight or so?

Best wishes,

Patrick Dale

D +61 2 8790 4044

M [+61 487 177 136](tel:+61487177136)

Edify Energy
Level 3, 201 Charlotte Street
Brisbane QLD 4000
Turrbal Country

www.edifyenergy.com

This email may contain privileged and confidential information. If you are not the named intended recipient, you must not copy, distribute or take any action in reliance on it. If you have received this email in error, please notify the sender immediately.

From: Patrick Dale <Patrick.dale@edifyenergy.com>
Sent: Tuesday, September 19, 2023 12:15 PM
To: Emma Yule <eyule@narromine.nsw.gov.au>; Phil Johnston <pjohnston@narromine.nsw.gov.au>
Subject: RE: Response Narromine Energy Storage System - Subdivision Request - 426 Dappo Road Narromine

Hi Emma, Phil,

It was great sharing today's discussion with you both, regarding Narromine ESS's draft noise impact assessment.

Based on these noise assessment findings, we will seek to renegotiate the nominated 'development area' with our Landholder Partners to relocate the proposal to this eastern aspect of the substation, within the same Lot 542. The noise report has demonstrated that we can comply with noise regulations required to achieve EIS approval, when the BESS is relocated to this eastern aspect of the substation.

I also suggested that if detailed design (prior to construction commencing) uncovers a genuine reason (e.g. flood risk) to relocate the BESS from the east of the substation to elsewhere on Lot 542, we would discuss this with Council and may propose a Modification to the Planning Permit, if this scenario/relocation of the BESS is indeed required. If this scenario were to occur, it would likely occur in 2026, by which time we could all benefit from mature and detailed understandings of the project and zoning of the town. For the purposes of advancing our EIS Application/Permit process and assuming the landholder agrees to this relocation change, we are comfortable with relocating the BESS Development Area from the northern aspect of the substation to the east. I will keep you informed how this discussion fares with our Landholder Partner.

Separately, we would appreciate any updates or guidance from Council if/when Essential Energy proposes any network upgrades to occur within the Narromine LGA. We are aware of some unofficial EsE proposals to enhance the network capacity west of Dubbo. We try to stay close to these potential works, so would appreciate Council's prompting if/when Council is aware of proposed works by EsE. Whilst our Narromine ESS proposal will certainly be of benefit to the power system (particularly in Narromine and west of Dubbo), other works proposed by Essential Energy will also be of benefit to this region and also our *Burroway Solar Farm* proposal.

Finally, in regards to the [Burroway Solar Farm](#), some updates on our EIS preparation efforts:

- Agricultural Impact Assessment (soils) - **complete**
- Aboriginal Cultural & Heritage Assessment – **complete**
- Historical Heritage Assessment – **complete**

Traffic Impact Assessment – complete

- Preliminary Hazards Assessment – complete
- Biodiversity Assessment Report – complete

These are the bulk of the technical studies required, so great we have completed this in good order. If you would like to share a separate call to discuss any details, please let me know.

For the remainder of the year, we will be working with the EIS Planning Consultant to prepare supporting info, such as:

- Landscape Visual Impact Assessment
- Social Impact Assessment
- Noise Impact Assessment
- Preliminary Accommodation and Employment Strategy
- Community Engagement efforts (*likely to occur Q4-2023 and/or Q1 2024*)

We remain on track to submit the EIS to NSW DPE in February-2024 and will be sure to keep in touch and present details to you well ahead of this submission.

Best wishes,

Patrick Dale

D [+61 2 8790 4044](tel:+61287904044)

M [+61 487 177 136](tel:+61487177136)



Edify Energy
Level 3, 201 Charlotte Street
Brisbane QLD 4000
Turrbal Country

www.edifyenergy.com

This email may contain privileged and confidential information. If you are not the named intended recipient, you must not copy, distribute or take any action in reliance on it. If you have received this email in error, please notify the sender immediately.

From: [Patrick Dale](#)
To: [REDACTED]
Subject: Burroway Solar Farm - Planning Application Details
Date: Wednesday, 20 March 2024 3:48:22 PM
Attachments: [image834746.png](#)
[image680335.png](#)
[image293503.png](#)
[image270497.png](#)
[image004795.png](#)
[image745249.png](#)
[Community Engagement Flyer - Burroway Final.pdf](#)

Hi Greg,

Thanks again for your time on the phone yesterday.

Ahead of our meeting tomorrow, please see the following details which provide you with background on Edify Energy and our proposed Burroway Solar Farm:

- The **attached** document provides an overview of the proposal, located on Lot 70 in Deposit Plan 1251856, which is known as 'Kookaburra' 1955 Eumungerie Road.
- [This link](#) also provides you access to the planning application reports, which will be submitted to the NSW Department of Planning and Environment next week.

I will have some additional material which we can run through tomorrow, and I look forward to seeing you in the morning.

Best wishes,

Patrick Dale

D +61 2 8790 4044
M +61 487 177 136



Edify Energy
Level 3, 201 Charlotte Street
Brisbane QLD 4000
Turrbal Country

www.edifyenergy.com

This email may contain privileged and confidential information. If you are not the named intended recipient, you must not copy, distribute or take any action in reliance on it. If you have received this email in error, please notify the sender immediately.

