



## Notification of approval decision

### Ravensthorpe Gold Project (EPBC 2024/10045)

This decision is made under section 130(1) and 133(1) of the *Environment Protection and Biodiversity Conservation Act 1999* (EPBC Act). Note that section 134(1A) of the EPBC Act also applies to this approval. That provision provides, in general terms, that if the approval holder authorises another person to undertake any part of the Action, the approval holder must take all reasonable steps to ensure that the other person is informed of any conditions attached to this approval, and that the other person complies with any such conditions.


### Approved Action

<b>person to whom the approval is granted (approval holder)</b>	Medallion Metals Limited ABN: 89 609 225 023
<b>Action</b>	To create an underground gold and copper mine, with ancillary infrastructure (including box cuts), located 15 km southeast of Ravensthorpe, WA (See EPBC Act referral 2024/10045).

### Approval decision

<b>Decision</b>	My decision on whether or not to approve the taking of the Action for the purposes of the controlling provision for the Action is as follows.	
	<b>Controlling Provision</b>	<b>Decision</b>
	Listed threatened species and communities (section 18 and section 18A)	Approved
<b>period for which the approval has effect</b>	This approval has effect until 31 December 2055	
<b>conditions of approval</b>	The approval is subject to conditions under the EPBC Act as set out in Annexure A.	

### Person authorised to make decision

<b>name and position</b>	Kate Hamer Acting Branch Head Environment Assessments West
<b>signature</b>	
<b>date of decision</b>	30 January 2026

## Annexure A

**Note:** Words and terms appearing in **bold** (excluding headings) have the meaning assigned to them at **Part C – Definitions**.

---

### Part A – Avoidance, mitigation, and compensation conditions

---

#### CLEARING LIMITS

- 1) The approval holder must not:
  - a) **Clear** outside of the **Action area**.
  - b) **Construct** outside of the **Action area**.
- 2) The approval holder must not **clear** more than:
  - a) 53.23 hectares of **Carnaby’s Black Cockatoo habitat**.
  - b) 44.15 hectares of **Chuditch habitat**.
  - c) 38.07 hectares of **Malleefowl habitat**.
  - d) 23.92 hectares of **Proteaceae dominated Kwongkan shrublands of the Southeast Coastal Floristic Province of Western Australia**.

#### CONSTRUCTION ENVIRONMENTAL MANAGEMENT PLAN

- 3) To avoid and mitigate **harm to Carnaby’s Black Cockatoo, Chuditch, Malleefowl and Proteaceae dominated Kwongkan shrublands of the Southeast Coastal Floristic Province of Western Australia**, the approval holder must implement the **Construction Environmental Management Plan** prior to the **commencement of the Action** and continue to implement the **Construction Environmental Management Plan** until the completion of the action.
- 4) Within 7 days prior to **clearing** in an area, that area must be demarcated and at least one pre-clearance survey must be undertaken by a **fauna spotter**.

#### OFFSETS

- 5) To compensate for the residual significant impacts of the Action on **Carnaby’s Black Cockatoo, Chuditch, Malleefowl and Proteaceae dominated Kwongkan shrublands of the Southeast Coastal Floristic Province of Western Australia**, the approval holder must commence implementation of the **Offset Strategy** prior to the **commencement of the Action** and continue to implement the **Offset Strategy** at least until the expiry date of this approval.
- 6) The approval holder must not **commence the Action** unless it has commenced **groundworks** in the **Biodiversity Offset Area**.
- 7) The approval holder must improve the **Biodiversity Offset Area** to achieve the offset outcomes and the following:

- a) Establish, and manage until **self-sustaining**, 115 ha of **Carnaby's Black Cockatoo foraging habitat** that has a **habitat quality score**, determined using the Carnaby's habitat quality scoring framework at Attachment C, of 7/10 within 15 years from the date of this approval decision.
- b) Establish, and manage until **self-sustaining**, 60 ha of **Malleefowl habitat** that has a **habitat quality score**, determined using the Malleefowl habitat quality scoring framework at Attachment E, of 7/10 within 15 years from the date of this approval decision.
- c) Establish, and manage until **self-sustaining**, 70 ha of **Chuditch habitat** that has a **habitat quality score**, determined using the Chuditch habitat quality scoring framework at Attachment D, of 7/10 within 15 years from the date of this approval decision.
- d) Establish, and manage until **self-sustaining**, 55 ha of **Proteaceae dominated Kwongkan shrublands of the Southeast Coastal Floristic Province of Western Australia** that has a **habitat quality score**, determined using the **Kwongkan TEC** habitat quality scoring framework at Attachment F, of 7/10 within 15 years from the date of this approval decision.

**Note:** For the avoidance of doubt, the same area of land may satisfy the requirements of these conditions for the provision of **habitat** for multiple **protected matters** and **Proteaceae dominated Kwongkan shrublands of the Southeast Coastal Floristic Province of Western Australia**.

- 8) The approval holder must achieve the **offset completion criteria** for each **protected matter** at the **Biodiversity Offset Area**.
- 9) The approval holder must, within 40 **business days** of the 5<sup>th</sup>, 10<sup>th</sup>, 15<sup>th</sup> and 20<sup>th</sup> anniversaries of the **commencement of the Action**, submit to the **department** a report prepared by an independent **suitably qualified field ecologist** detailing progress against the **offset completion criteria** and offset outcomes.
- 10) The approval holder must, within 80 **business days** of the 5<sup>th</sup>, 10<sup>th</sup>, 15<sup>th</sup> and 20<sup>th</sup> anniversaries of the **commencement of the Action**, publish the most recent reports required by Condition 9 on its **website**. Each report must remain published on the website until at least the expiry date of this approval.

---

## Part B – Administrative conditions

---

### COMMENCEMENT OF THE ACTION

- 11) The approval holder must notify the **department** electronically of the date of **commencement of the Action**, within 15 **business days** following **commencement of the Action**.
- 12) The approval holder must not **commence the Action** later than 5 years from the date of this approval decision.
- 13) The approval holder must notify the **department** electronically of the date of commencing to implement the **Offset Strategy** within 5 **business days** following commencing to implement the **Offset Strategy**.

## PLAN REVISION

Note: Section 143A of the **EPBC Act** entitles the approval holder to apply for the **Minister's** approval of a revised version of a **plan**.

- 14) The approval holder may choose to revise a **plan** required to be implemented under condition 3 without submitting it for approval under section 143A of the **EPBC Act**, if:
- a) the taking of the Action in accordance with the revised **plan** would be consistent with the approved Action,
  - b) the taking of the Action in accordance with the revised **plan** would be consistent with the conditions attached to this approval,
  - c) the taking of the Action in accordance with the revised **plan** would not be likely to have a **new or increased impact**, and
  - d) the approval holder notifies the **department** electronically that it has prepared a revised version of the **plan** (the 'revised **plan**'). In notifying the **department**, the approval holder must specify each condition which references the **plan** and provide the **department** with:
    - i) an electronic copy of the revised **plan**,
    - ii) an electronic copy of the revised **plan** marked up with track changes to show the differences between the **plan** and the revised **plan**,
    - iii) a comprehensive explanation of all differences between the **plan** and the revised **plan**,
    - iv) a declaration that the approval holder has read and understands the *Guidance on 'new or increased impact' relating to changes to approved management plans under EPBC Act environmental approvals, Commonwealth of Australia 2017*,
    - v) a comprehensive analysis and detailed discussion on the likelihood that taking the Action in accordance with the revised **plan** will not have, or will be not likely to have, a **new or increased impact**,
    - vi) written notice of the date on which the approval holder will implement the revised **plan** (the 'revised **plan** implementation date'), being at least 30 **business days** after the date of providing notice of the revision of the **plan**, or a date agreed to in writing with the **department**, and
    - vii) a copy of the **compliance report** for the latest **ACR period** and a statement of any relevant history of compliance (including non-compliance) in relation to the **plan**.

The approval holder must commence implementation of the revised **plan** from the revised **plan** implementation date unless otherwise notified in writing by the **Minister**.

- 15) If the **Minister** notifies the approval holder that the **Minister** is satisfied that the taking of the Action in accordance with a **plan** which has been revised without submitting it for the **Minister's** approval would be likely to have a **new or increased impact**, then:
- a) the approval holder's ability to revise a **plan** without submitting the **plan** for **Minister** approval does not apply, or ceases to apply, in relation to the revised **plan**,
  - b) the approval holder must implement the **plan** in force immediately prior to that revised **plan** or a version of the **plan** specified by the **Minister** in the notice, and
  - c) the **Minister** may also notify that, for a specified period, the approval holder's ability to revise a **plan** without submitting the **plan** for **Minister** approval does not apply for one or more specified **plans**.
- 16) The approval holder may, at any time by giving written notice to the **department**, revoke its choice to implement a **plan** which has been revised without submitting it for the **Minister's** approval. If the approval holder revokes the choice to implement a revised **plan**, the approval holder must implement the **plan** in force immediately prior to that revised **plan**.

Note: The above conditions are not intended to limit the operation of section 143A of the EPBC Act.

#### **SUBMISSION AND PUBLICATION OF PLANS**

- 17) Wherever these conditions require the approval holder to submit any **plan** to the **department**, all such **plans** must be submitted to the **department** electronically.
- 18) Unless otherwise agreed to in writing by the **Minister**, the approval holder must publish each **plan** on the **website** within 15 **business days** of the date:
- a) of this approval, if the version of the **plan** to be implemented is specified in these conditions,
  - b) the **plan** is approved by the **Minister** in writing, if the **plan** requires the approval of the **Minister**,
  - c) the plan is submitted to the **department** in accordance with a requirement of these conditions, if the **plan** does not require the approval of the **Minister**.
- 19) The approval holder must keep all **plans** published on the **website**, in a format that is easily accessible and downloadable, from the first date which that **plan** must be published and until the expiry date of this approval. This requirement applies to all current and superseded versions of **plans**.
- 20) The approval holder is required to exclude or redact **sensitive biodiversity data** from any version of a **plan** before that **plan** is published on the **website** or otherwise provided to a member of the public. If **sensitive biodiversity data** is excluded or redacted from a **plan**, the approval holder must notify the **department** in writing what exclusions and redactions have been made in the version published on the **website**.

## COMPLIANCE RECORDS

- 21) The approval holder must maintain accurate and complete **compliance records** and document the procedure for recording and storing **compliance records**.
- 22) If the **department** makes a request in writing, the approval holder must provide electronic copies of **compliance records** to the **department** within the timeframe specified in the request.

**Note: Compliance records** may be subject to audit by the **department**, or by an **independent auditor** in accordance with section 458 of the **EPBC Act**, and/or be used to verify compliance with the conditions. Summaries of the results of an audit may be published on the **department's** website or through the general media.

- 23) The approval holder must ensure that any **monitoring data**, surveys, maps, and other spatial and metadata required under the conditions of this approval are prepared in accordance with the *Guidelines for biological survey and mapped data*, Commonwealth of Australia 2018, or as otherwise specified by the **Minister** in writing.
- 24) The approval holder must ensure that any **monitoring data**, surveys, maps, and other spatial and metadata required under the conditions of this approval are prepared in accordance with the *Guide to providing maps and boundary data for EPBC Act projects*, Commonwealth of Australia 2021, or as otherwise specified by the **Minister** in writing.
- 25) The approval holder must ensure that any assessment of **habitat quality** for **protected matters** is conducted by an **independent suitably qualified ecologist**.
- 26) The approval holder must submit all **monitoring data**, surveys, maps, other spatial and metadata and all species occurrence record data (sightings and evidence of presence) electronically to the **department** within 40 **business days** of the next anniversary of the date of this approval decision except where otherwise specified in a **plan**.

## ANNUAL COMPLIANCE REPORTING

- 27) The approval holder must prepare a **compliance report** for each **Annual Compliance Report period (ACR period)**.
- 28) The approval holder must ensure each **compliance report** includes:
  - a) accurate and complete details of compliance and any non-compliance with:
    - i) each condition attached to this approval decision, and
    - ii) all commitments made in each **plan**,
  - b) a schedule of all **plans** in effect in relation to these conditions during the **ACR period**,
  - c) accurate and complete details of how each **plan** was implemented during the **ACR period**, and
  - d) if any **incident** occurred, accurate and complete details of each **incident**.

- 29) The approval holder must ensure each **compliance report** is consistent with the *Annual Compliance Report Guidelines*, Commonwealth of Australia 2023.
- 30) The approval holder must, within 40 **business days** following the end of each **ACR period**, in a format that is easily accessible and downloadable, publish on the **website**:
- a) each **compliance report**, and
  - b) a **shapefile** showing all **clearing of protected matters**, and their habitat, undertaken within the **ACR period**.
- 31) The approval holder must exclude or redact **sensitive biodiversity data** from each **compliance report** and **shapefile** published on the **website** or otherwise provided to a member of the public.
- a) If **sensitive biodiversity data** is excluded or redacted from a version of a **compliance report** published or otherwise provided to a member of the public, submit the full **compliance report** to the **department** within 5 **business days** of its publication on the **website** and notify the **department** in writing what exclusions and redactions have been made in the version published on the **website** or otherwise provided to a member of the public.
  - b) If **sensitive biodiversity data** is excluded or redacted from a version of a **shapefile** published or otherwise provided to a member of the public, submit the full **shapefile** to the **department** within 5 **business days** of its publication on the **website** and notify the **department** in writing what exclusions and redactions have been made in the version published on the **website** or otherwise provided to a member of the public.
- 32) The approval holder must notify the **department** electronically, within 5 **business days** of each date of publication that the **compliance report** has been published on the **website**. In this notification, the approval holder must provide the **department** with the web address for where the **compliance report** and related **shapefile** are published on the **website**.
- 33) The approval holder must keep each **compliance report** and related **shapefile** published on the **website** from the first date which that **compliance report** must be published and until the expiry date of this approval.

**Note:** **Compliance reports** may be published on the **department's** website.

## REPORTING NON-COMPLIANCE

- 34) The approval holder must notify the **department** electronically, within 2 **business days** of becoming aware of any **incident**. The approval holder must specify in each notification:
- a) any condition or commitment made in a **plan** which has not been, or may have not been, complied with,
  - b) a short description of the **incident**, and
  - c) the location (if applicable, including co-ordinates), date and time of the **incident**.

- 35) The approval holder must provide to the **department** in writing, within 12 **business days** of becoming aware of an **incident**, the details of that **incident**. The approval holder must specify:
- a) all corrective measures and investigations which the approval holder has already taken in respect of the **incident**,
  - b) the potential impacts of the **incident**,
  - c) the method and timing of any corrective measures that the approval holder proposes to undertake to address the **incident**, and
  - d) any variation of these conditions or revision of a **plan** that will be required to prevent recurrence of the **incident** and/or to address its consequences.

### INDEPENDENT AUDIT

- 36) The approval holder must ensure that an **independent audit** of compliance with the conditions is conducted for every **audit period**.
- 37) The approval holder must submit details of the proposed **independent auditor** and their qualifications to the **department** within 10 **business days** following the end of each **audit period**.
- 38) The approval holder must ensure the scope of each **independent audit** is sufficient to determine the compliance status for each condition of approval, and each commitment made in each **plan**.
- 39) The approval holder must ensure the criteria for each **independent audit** and the undertaking of each **independent audit** are consistent with the **Independent Audit and Audit Report Guidelines**.
- 40) The approval holder must submit an **audit report** to the **department** for written agreement from the **department** within 3 months following the end of each **audit period**, or as otherwise directed by the **Minister** in writing.
- 41) The approval holder must ensure each **audit report** is completed to the satisfaction of the **Minister** and is consistent with the **Independent Audit and Audit Report Guidelines** to the extent that the **Independent Audit and Audit Report Guidelines** are consistent with these conditions.
- 42) The approval holder must publish each **audit report** on the **website**, in a format that is easily accessible and downloadable, within 10 **business days** of the date the **department** agrees to that **audit report** in writing.
- 43) The approval holder must notify the **department** within 5 **business days** of the date the **audit report** is published on the **website**. In this notification, the approval holder must provide the **department** with the web address for where the **audit report** is published on the **website**.
- 44) The approval holder must keep each **audit report** published on the **website** from the first date which that **audit report** must be published and until the expiry date of this approval.

## COMPLETION OF THE ACTION

45) Within 20 **business days** after the **completion of the Action**, and, in any event, at least 20 **business days** prior to the expiry date of this approval, the approval holder must notify the **department** electronically of the date of **completion of the Action** and provide **completion data**. The approval holder must submit any spatial data that comprises **completion data** as a **shapefile**.

---

### Part C – Definitions

---

**Action area** means the location of the Action, represented in Attachment A by the zone enclosed by the red line designated ‘EPBC Development Envelope’.

**Annual Compliance Report period** or **ACR period** means each subsequent 12-month period following the date of this approval decision until the expiry date of this approval, unless otherwise specified in writing by the **Minister**.

**Auditor** means a person, or firm, who:

- has demonstrated experience in undertaking government-regulated environmental compliance audits, and
- holds relevant professional qualifications and accreditations.

**Audit period** means each subsequent three-year period following the **commencement of the Action** until the expiry date of this approval unless otherwise specified in writing by the **Minister**.

**Audit report** means a written report of an **independent audit**.

**Biodiversity data** means ‘biodiversity data’ as described in the *Policy on Accessing and Sharing Biodiversity Data*, Commonwealth of Australia 2024.

**Biodiversity Offset Area** means the enclosed by the red line designated ‘Site Boundary’ to be restored by the proponent for their offset requirements under the **EPBC Act**, which are located within the Shire of Ravensthorpe at:

- Lot 342 on Deposited Plan 50160, Volume 2648, Folio 867; and
- Lot 344 on Deposited Plan 50160, Volume 2648, Folio 869.

**Business day** means a day that is not a Saturday, a Sunday, or a public holiday in Western Australia.

**Carnaby’s Black Cockatoo** or **CBC** means the **EPBC Act** listed threatened species Carnaby’s Black Cockatoo (*Zanda latirostris* listed as *Calyptorhynchus latirostris*).

**Carnaby's Black Cockatoo Habitat** means any area which provides foraging habitat for **CBC**. The location of **CBC** foraging habitat identified in relation to the **Action Area** at the time of this approval decision is represented in Attachment A by the shades of green.

**Chuditch** (*Dasyurus geoffroii*) means the **EPBC Act** listed threatened species Chuditch (*Dasyurus geoffroii*)

**Chuditch habitat** means habitat suitable for Chuditch to breed, forage or use for cover including but not limited to mallee shrublands, woodland and jarrah forests. The location of **Chuditch habitat** identified in relation to the **Action Area** at the time of this approval decision is represented in Attachment A by the shades of green.

**Clear, cleared or clearing** means the cutting down, felling, thinning, logging, removing, killing, destroying, poisoning, ringbarking, uprooting, or burning of vegetation and/or **protected matter** or their habitat.

**Commence the Action** or **commences the Action** means the first instance of any on-site **clearing, construction** or other physical activity associated with the Action, but does not include minor physical disturbance necessary to:

- Undertake pre-clearance surveys or monitoring programs.
- Install signage and/or temporary fencing to prevent unapproved use of the **Action area**, so long as the signage and/or temporary fencing is located where it does not **harm any protected matter**.
- Protect environmental and property assets from fire, weeds, and feral animals, including use of existing surface access tracks.
- Install temporary site facilities for persons undertaking pre-commencement activities so long as these facilities are located where they do not **harm any protected matter**.

**Commencement of the Action** means the date on which the approval holder **commences the Action**.

**Completion data** means an environmental report and spatial data clearly detailing how the conditions of this approval have been met.

**Completion of the Action** means the date on which all activities associated with the approved Action, other than those which provide compensation for the impacts of the Action, have permanently ceased and/or been completed.

**Compliance records** means all documentation or other material in whatever form required to demonstrate compliance with these conditions of approval (including compliance with commitments made in **plans**) in the approval holder's possession, or that are within the approval holder's power to obtain lawfully.

**Compliance report** means a written report of compliance with, and fulfilment of, these conditions (including compliance with commitments made in **plans**).

**Construction** means:

- the erection of a building or structure that is, or is to be, fixed to the ground and wholly or partially fabricated on-site,
- the alteration, maintenance, repair or demolition of any building or structure,
- any work which involves breaking of the ground (including pile driving) or bulk earthworks,
- the laying of pipes and other prefabricated materials in the ground, and
- any associated excavation work.

**Construction** does not include the installation of temporary fences or signage or **exploration**.

**Construction Environmental Management Plan** means the document titled *Ravensthorpe Gold Project: Construction Environmental Management Plan, Version: 2.0* – Prepared by Talis Consultants on 29 July 2025 for Medallion Metals Limited.

**Department** means the Australian Government agency responsible for administering the **EPBC Act**.

**EPBC Act** means the *Environment Protection and Biodiversity Conservation Act 1999* (Cth).

**Fauna spotter** means a person with relevant qualifications meeting the requirements of the Western Australian Department of Biodiversity, Conservation and Attractions, to detect, capture, care for, assess, and release wildlife who has at least 3 years' experience undertaking this work with each faunal **protected matter**.

**Groundworks** means any work which involves weeding, fencing, removal of litter or pest control or other measures specified in the **offset strategy**.

**Habitat quality** means the measure of the overall capacity and ongoing viability of a site to support **protected matters**, determined with respect to site condition, site context and species stocking rate as outlined within the **department's** Habitat Quality Scoring Tools.

**Habitat quality scoring framework** means the:

- The Habitat Quality Scoring Framework – Carnaby's Black Cockatoo at Attachment C
- The Habitat Quality Scoring Framework – Chuditch at Attachment D.
- The Habitat Quality Scoring Framework – Malleefowl at Attachment E.
- The Habitat Quality Scoring Framework – Kwongkan TEC at Attachment F.

**Habitat quality score** means the final score (out of 10) as determined by applying the relevant **Habitat Quality Scoring Framework**. The score is to be calculated by identifying the individual scores for each column (such as Site/vegetation condition, Site context, Species stocking rate/habitat value, Habitat value/diagnostic criteria) in the relevant framework and summing these to determine the final score out of 10.

**Harm** means to cause any measurable direct or indirect disturbance or deleterious change as a result of any activity associated with the Action.

**Incident** means any:

- event which has the potential to, or does, **harm** any **protected matter**,
- potential non-compliance with these conditions, including the administrative requirements,
- actual non-compliance with these conditions, including the administrative requirements,
- potential non-compliance with one or more commitment made in a **plan**, and/or
- actual non-compliance with one or more commitment made in a **plan**.

**Independent** means a person, or firm, who does not have any individual, financial\*, employment\* or family affiliation or any conflicting interests with the Action, the approval holder or the approval holder's staff, representatives, or associated persons.

\*Other than for the purpose of undertaking the role for which the person, or firm, is required.

**Independent audit** means an audit, conducted by an **independent auditor**, of compliance with and fulfilment of these conditions and the commitments made in **plans**, objectively evaluated against the audit criteria developed by the **independent auditor**, in accordance with the **Independent Audit and Audit Report Guidelines** to the extent that the **Independent Audit and Audit Report Guidelines** are consistent with these conditions.

**Independent Audit and Audit Report Guidelines** means the *Environment Protection and Biodiversity Conservation Act 1999 Independent Audit and Audit Report Guidelines*, Commonwealth of Australia 2019.

**Malleefowl** (*Leipoa ocellata*) means the **EPBC Act** listed threatened species, listed as Malleefowl *Leipoa ocellata*.

**Malleefowl habitat** means habitat suitable for Malleefowl to breed, forage or use for cover, including, but not limited to, mallee shrublands, Melaleuca shrubland and acacia sandplains. The location of **Malleefowl habitat** identified in relation to the **Action Area** at the time of this approval decision is represented in [Attachment A](#) by the shades of green.

**Minister** means the Australian Government Minister administering the **EPBC Act**, including any delegate thereof.

**Monitoring data** means the data required to be recorded under the conditions of this approval, including **sensitive biodiversity data**.

**New or increased impact** means any direct or indirect increase in the impacts of an Action, an increase to the likelihood of an impact occurring, a reduction to the monitoring or mitigation measures for a **protected matter**, or a change to the nature or management of an environmental offset as outlined in the *Guidance on 'new or increased impact' relating to changes to approved management plans under EPBC Act environmental approvals*, Commonwealth of Australia 2017.

**Offset Strategy** means the document titled *Offsets Strategy – Ravensthorpe Gold Project, Version 5.0*. Prepared by Talis Consultants for Medallion Metals Limited, dated 21 January 2026 or the most recent subsequent version approved by the **Minister** in writing.

**Offset completion criteria** means the performance targets and completion criteria for Biodiversity Offset Area as specified in Attachment G.

**Plan** means any action management plan or strategy that the approval holder is required by these conditions to implement.

**Protected matter** means a matter protected under a controlling provision in Part 3 of the **EPBC Act** for which this approval has effect.

**Proteaceae dominated Kwongkan shrublands of the Southeast Coastal Floristic Province of Western Australia (or Kwongkan TEC)** means the means the **EPBC Act** listed threatened ecological community Proteaceae dominated Kwongkan shrublands of the Southeast Coastal Floristic Province of Western Australia. The location of **Proteaceae dominated Kwongkan shrublands of the Southeast Coastal Floristic Province of Western Australia** identified in relation to the **Action Area** and **Biodiversity Offset Area** at the time of this approval decision is represented in Attachment A by the black and white cross hatching.

**Self-sustaining** means continuing to thrive in perpetuity without human intervention.

**Sensitive biodiversity data** means **biodiversity data** which, if released, published or otherwise exposed, may result in **harm** to the relevant **protected matter** as a result of the intentional or unintentional misuse of that **biodiversity data**.

**Shapefile** means location and attribute information about the Action provided in an Esri shapefile format. Shapefiles must contain '.shp', '.shx', '.dbf' files and a '.prj' file that specifies the projection/geographic coordinate system used. Shapefiles must also include an '.xml' metadata file that describes the shapefile for discovery and identification purposes.

**Suitably qualified ecologist** means a person who has relevant professional qualifications and at least 3 years of work experience designing and implementing surveys and **habitat quality** score assessments for the **protected matters** and can give an authoritative assessment and advice on the presence of **protected matters** and the habitat quality score of the **Proteaceae dominated Kwongkan shrublands of the Southeast Coastal Floristic Province of Western Australia** and the habitat of the other **protected matters** using relevant protocols, standards, methods and literature.

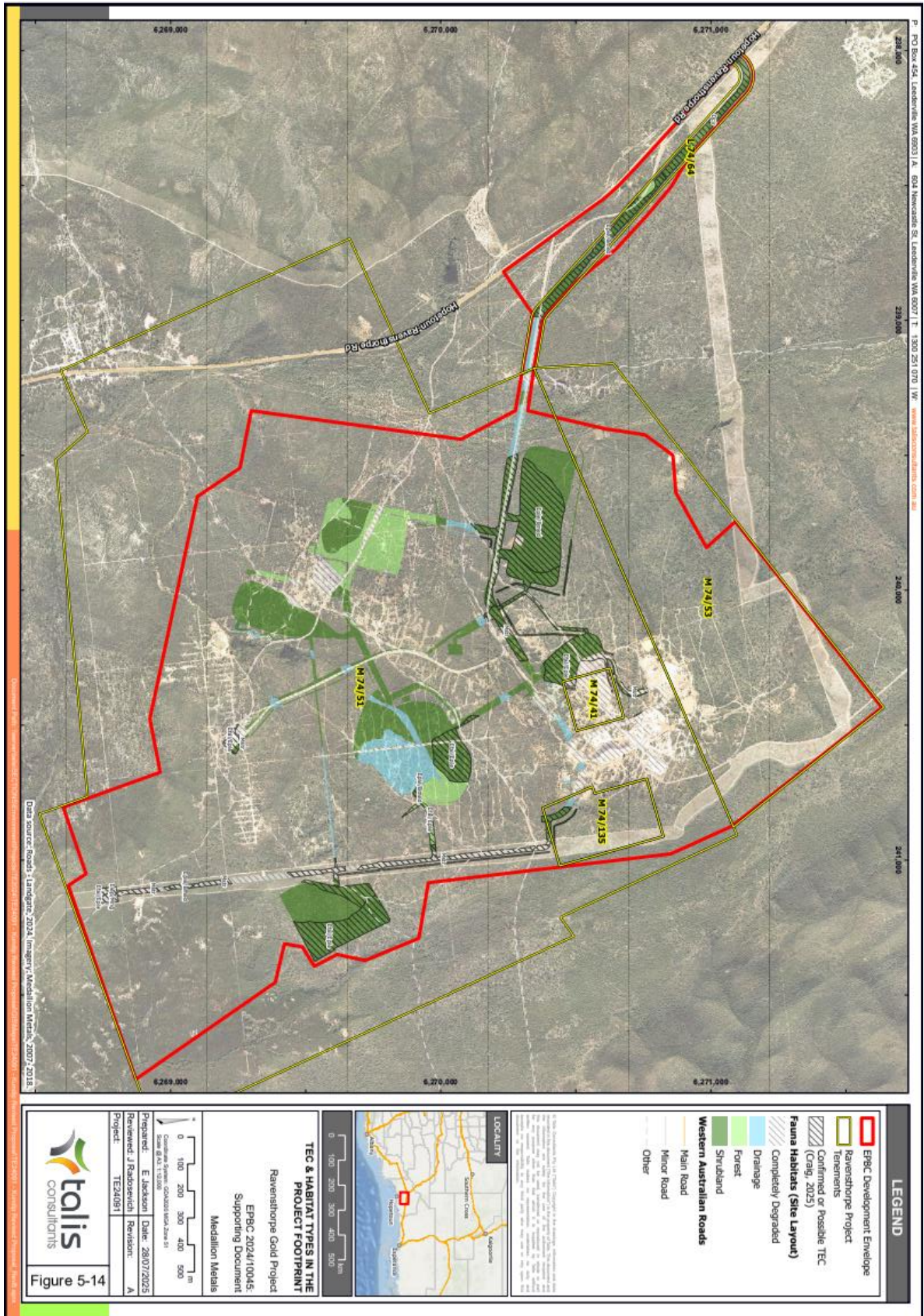
**Website** means a set of related web pages located under a single domain name attributed to the approval holder and available to the public.

---

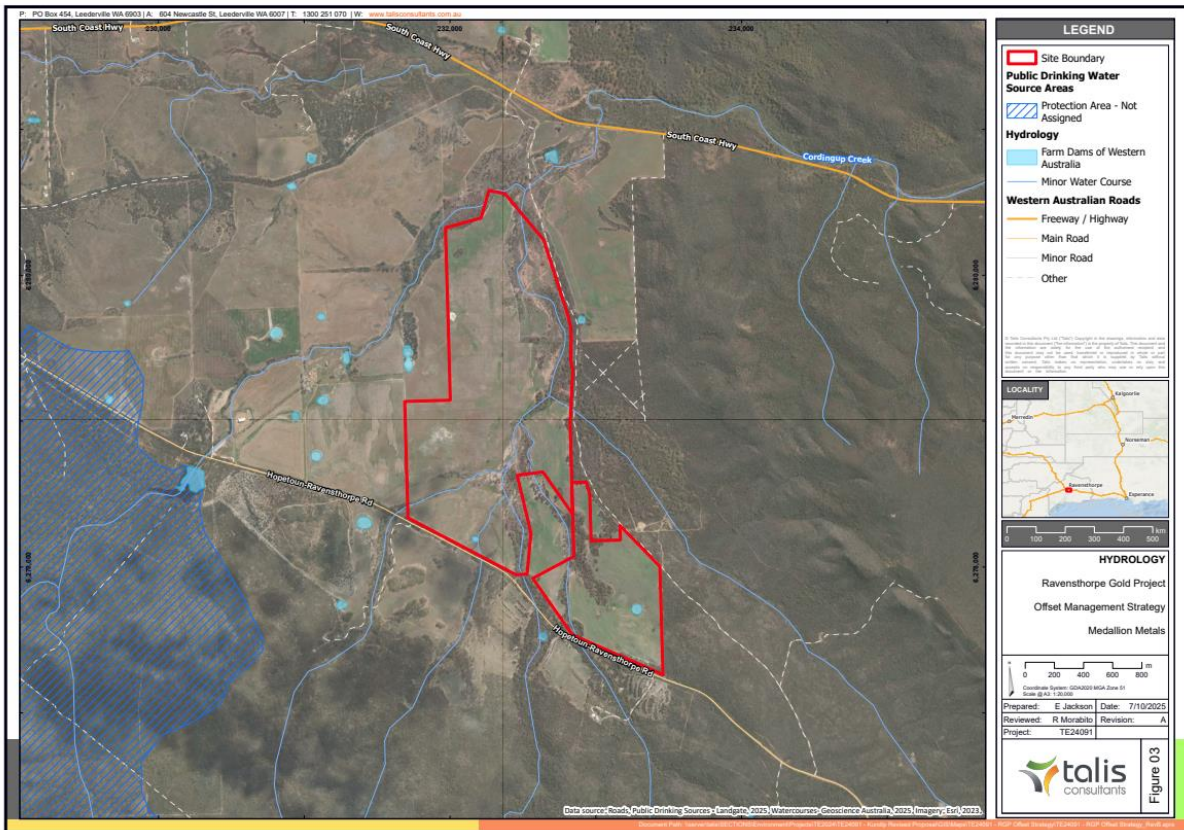
## Attachments

---

A: Action Area



B: Biodiversity Offset Area



C: Habitat quality scoring framework – Carnaby’s Black Cockatoo

Table 5-4: HQS Framework – Carnaby’s Black Cockatoo

Score	Site / vegetation condition*	Site context	Species stocking rate
6	Vegetation cover has High foraging value, such as: <ul style="list-style-type: none"> <li>• Kwongkan / Shrubland (&gt;25% projected foliage cover); OR</li> <li>• banksia and eucalypt woodlands with &gt;40% projected foliage cover.</li> <li>• Low percentage (&lt; 10%) of tree deaths</li> </ul>	N/A (scored out of 3)	N/A (0 or 1 score only)
5	Vegetation cover has Moderate to High foraging value, such as: <ul style="list-style-type: none"> <li>• Kwongkan / Shrubland (&gt;20% projected foliage cover); OR</li> <li>• banksia and eucalypt woodlands with 30-40% projected foliage cover; OR</li> <li>• &gt; 60% projected foliage cover but veg. condition reduced due to tree deaths (up to 20%)</li> </ul>	N/A (scored out of 3)	N/A (0 or 1 score only)
4	Vegetation cover has Moderate foraging value, such as: <ul style="list-style-type: none"> <li>• Kwongkan / Shrubland, banksia or eucalypt woodlands with 20-30% projected foliage cover.</li> <li>• Moderate percentage of tree deaths (30-40%)</li> </ul>	N/A (scored out of 3)	N/A (0 or 1 score only)
3	Vegetation cover has Low to Moderate foraging value, such as: <ul style="list-style-type: none"> <li>• Kwongkan / Shrubland, banksia or eucalypt woodlands with 10-20% projected foliage cover.</li> </ul>	<ul style="list-style-type: none"> <li>• Site is within 6km of known breeding site; OR</li> <li>• Site is within 12km of other foraging resources with site condition of at least 3.</li> </ul>	N/A (0 or 1 score only)
2	Vegetation cover has low foraging value, such as: <ul style="list-style-type: none"> <li>• Kwongkan / Shrubland, banksia and eucalypt woodlands with &lt;10% projected foliage cover; OR</li> </ul>	<ul style="list-style-type: none"> <li>• Site is within 12km of known breeding site; OR</li> </ul>	N/A (0 or 1 score only)

Score	Site / vegetation condition*	Site context	Species stocking rate
	<ul style="list-style-type: none"> <li>• Paddocks and/or urban areas with scattered foraging trees.</li> <li>• Paddocks that are densely vegetated with melons or other known food-source weeds that represent a short-term and/or seasonal food source.</li> </ul>	<ul style="list-style-type: none"> <li>• Site is within 15km of other foraging resources with site condition of at least 4.</li> </ul>	
1	Vegetation cover has Negligible to low foraging value, such as: <ul style="list-style-type: none"> <li>• Scattered known forage species (&lt;2% projected foliage cover);</li> <li>• Lightly vegetated paddocks with known food-source weeds.</li> </ul>	<ul style="list-style-type: none"> <li>• Site is within 15km of known breeding site; OR</li> <li>• Site is between 15km and 20km of other foraging resources with site condition of at least 5</li> </ul>	<ul style="list-style-type: none"> <li>• species observed as seasonal or transient users; OR</li> <li>• abundant foraging evidence.</li> </ul>
0	Vegetation cover does not contain foraging species, such as: <ul style="list-style-type: none"> <li>• No Proteaceae, eucalypts or other potential sources of food;</li> <li>• Bare ground or developed sites devoid of vegetation.</li> </ul>	<ul style="list-style-type: none"> <li>• Site is further than 15km from known breeding site; OR</li> <li>• Site is further than 20km from other foraging resources.</li> </ul>	<ul style="list-style-type: none"> <li>• no evidence of foraging, historic records, or records during baseline surveys</li> </ul>
<b>Subtotal</b>	<b>/6</b>	<b>/3</b>	<b>/1</b>
<b>Total HQS</b>	<b>/10</b>		
* Vegetation structural class terminology follows Keighery (1994)			

**D: Habitat quality scoring framework – Chuditch**

**Table 5-5: HQS Framework – Chuditch**

Score	Site / vegetation condition *	Site context	Species stocking rate / habitat value
4	N/A (scored out of 3)	<ul style="list-style-type: none"> <li>• Key threats absent - Feral predators eliminated (e.g. fenced enclosure, intensive control),</li> <li>• High connectivity of habitat:                             <ul style="list-style-type: none"> <li>○ Connected to &gt; 20,000 ha of native vegetation with limited fragmentation.</li> </ul> </li> </ul>	N/A (scored out of 3)
3	Excellent vegetation condition	<ul style="list-style-type: none"> <li>• Key threats reduced - Feral predators suppressed (baiting/ trapping),</li> <li>• High connectivity of habitat:                             <ul style="list-style-type: none"> <li>○ Connected to &gt; 20,000 ha of native vegetation with limited fragmentation</li> </ul> </li> </ul>	<ul style="list-style-type: none"> <li>• Evidence of local habitation.</li> </ul>
2	Good or Very Good vegetation condition	<ul style="list-style-type: none"> <li>• Key threats reduced - Feral predators suppressed;</li> <li>• Moderate connectivity of habitat:                             <ul style="list-style-type: none"> <li>○ Connected to 5,000-20,000 ha of native vegetation with limited fragmentation</li> </ul> </li> </ul>	<ul style="list-style-type: none"> <li>• Evidence of seasonal or transient use; OR</li> <li>• Adequate den resources (e.g. hollow logs, burrows or rock crevices); AND</li> <li>• Adequate prey resources (particularly large invertebrates).</li> </ul>
1	Degraded vegetation condition	<ul style="list-style-type: none"> <li>• Key threats prevalent:                             <ul style="list-style-type: none"> <li>○ Feral predators suppressed (baiting/trapping),</li> </ul> </li> <li>• Low connectivity of habitat:                             <ul style="list-style-type: none"> <li>○ Connected to &lt;5,000 ha of native vegetation with limited fragmentation</li> </ul> </li> </ul>	<ul style="list-style-type: none"> <li>• Indirect evidence of use (From scats, scrapings/ diggings, tracks etc); OR</li> <li>• Adequate den resources; OR</li> <li>• Adequate prey resources.</li> </ul>
0	Completely degraded vegetation	<ul style="list-style-type: none"> <li>• Key threats prevalent:                             <ul style="list-style-type: none"> <li>○ No feral predator suppression.</li> </ul> </li> </ul>	<ul style="list-style-type: none"> <li>• No evidence of habitation, no historic records, or records during baseline surveys</li> </ul>
<b>Subtotal</b>	<b>/3</b>	<b>/4</b>	<b>/3</b>
<b>Total HQS</b>	<b>/10</b>		

E: Habitat quality scoring framework – Malleefowl

Score	Site / vegetation condition *	Site context	Species stocking rate / habitat value
4	N/A (scored out of 3)	<ul style="list-style-type: none"> <li>• Key threats absent:                             <ul style="list-style-type: none"> <li>○ Grazing animals and Feral predators eliminated (e.g. fenced enclosure, intensive control),</li> </ul> </li> <li>• High connectivity of habitat:                             <ul style="list-style-type: none"> <li>○ Continuous vegetative cover extends for at least 2km</li> </ul> </li> </ul>	N/A (scored out of 3)
3	<ul style="list-style-type: none"> <li>• Excellent vegetation condition, represented by mallee or shrubland vegetation</li> </ul>	<ul style="list-style-type: none"> <li>• Key threats reduced:                             <ul style="list-style-type: none"> <li>○ Grazing animals and Feral predators suppressed (baiting/trapping),</li> </ul> </li> <li>• High connectivity of habitat:                             <ul style="list-style-type: none"> <li>○ Continuous vegetative cover extends for at least 2km</li> </ul> </li> </ul>	<ul style="list-style-type: none"> <li>• Evidence of use for breeding purposes (recently active, or intermittently active mounds<sup>#</sup>); OR</li> <li>• Evidence of transient use.</li> </ul>
2	<ul style="list-style-type: none"> <li>• Good or Very Good vegetation condition, represented by mallee or shrubland vegetation</li> </ul>	<ul style="list-style-type: none"> <li>• Key threats reduced:                             <ul style="list-style-type: none"> <li>○ Grazing animals and Feral predators suppressed</li> </ul> </li> <li>• Moderate connectivity of habitat:                             <ul style="list-style-type: none"> <li>○ Continuous vegetative cover extends less than 2km but more than 1km</li> </ul> </li> </ul>	<ul style="list-style-type: none"> <li>• Evidence of transient use (detection from tracks, scats, feathers or individuals).</li> </ul>
1	<ul style="list-style-type: none"> <li>• Degraded vegetation condition, represented by mallee or shrubland vegetation</li> </ul>	<ul style="list-style-type: none"> <li>• Key threats reduced:                             <ul style="list-style-type: none"> <li>○ Grazing animals and Feral predators suppressed</li> </ul> </li> <li>• Low connectivity of habitat:                             <ul style="list-style-type: none"> <li>○ Continuous vegetative cover extends less than 1km</li> </ul> </li> </ul>	<ul style="list-style-type: none"> <li>• Indirect evidence of transient use only (detection from tracks, scats, feathers etc)</li> </ul>
0	<ul style="list-style-type: none"> <li>• Completely degraded vegetation</li> </ul>	<ul style="list-style-type: none"> <li>• No Grazing animals or feral predator suppression.</li> <li>• No connectivity of habitat</li> </ul>	<ul style="list-style-type: none"> <li>• Species, if present, is below detectable densities or no presence of species detected (tracks, scats or feathers)</li> </ul>
<b>Subtotal</b>	<b>/3</b>	<b>/4</b>	<b>/3</b>
<b>Total HQS</b>	<b>/10</b>		
* Vegetation condition according to EPA (2016) / <sup>#</sup> Mound classification as per National Malleefowl Recovery Team (2016).			

**F: Habitat quality scoring framework – Kwongkan TEC**

WILKINSON WILSON LTD CONSULTANTS

Table 5-7: HQS Framework – Kwongkan TEC

Score	Site / vegetation condition*	Site context	Habitat value/ Diagnostic Criteria <sup>‡</sup>
4	N/A (scored out of 3)	N/A (scored out of 3)	<ul style="list-style-type: none"> <li>• 30% or greater cover of Proteaceae species, AND</li> <li>• HIGH Condition Category rating</li> </ul>
3	Excellent vegetation condition	<ul style="list-style-type: none"> <li>• Key threats absent - Grazing animals eliminated (e.g. fenced enclosure, intensive control),</li> <li>• High connectivity of Ecological Community with extant Kwongkan TEC vegetation.</li> </ul>	<ul style="list-style-type: none"> <li>• 30% or greater cover of Proteaceae species, AND</li> <li>• MODERATE Condition Category rating</li> </ul>
2	Good or Very Good vegetation condition	<ul style="list-style-type: none"> <li>• Key threats reduced - Grazing animals suppressed (baiting/trapping),</li> <li>• Moderate connectivity of Ecological Community with extant Kwongkan TEC vegetation.</li> </ul>	<ul style="list-style-type: none"> <li>• Average cover of Proteaceae species being less than 30% and greater than 10%, OR</li> <li>• Not meeting MODERATE Condition Category rating</li> </ul>
1	Degraded vegetation condition	<ul style="list-style-type: none"> <li>• Key threats reduced - Grazing animals suppressed (baiting/trapping),</li> <li>• Low connectivity of Ecological Community with extant Kwongkan TEC vegetation</li> </ul>	<ul style="list-style-type: none"> <li>• Average cover of Proteaceae species being less than 10% OR</li> <li>• Not meeting MODERATE Condition Category rating</li> </ul>
0	Completely degraded vegetation	<ul style="list-style-type: none"> <li>• No feral grazing animal suppression.</li> <li>• No connectivity with extant Kwongkan TEC vegetation</li> </ul>	<ul style="list-style-type: none"> <li>• Completely degraded vegetation</li> </ul>
<b>Subtotal</b>	<b>/3</b>	<b>/3</b>	<b>/4<sup>Ⓢ</sup></b>
<b>Total HQS</b>	<b>/10</b>		

\* Vegetation condition according to EPA (2016)

<sup>‡</sup> Diagnostic Criteria as per Department of the Environment (2014), and described in Table 5-3.

<sup>Ⓢ</sup> A score of at least 3 is required at project completion for this component of the HQS to achieve the Performance Target for the Kwongkan TEC offset.

G: Performance Targets and Completion Criteria

Medallion Metals Ltd

CO2 ISUIUTIS

Table 18-1: Performance Targets and Completion criteria for BOA

Aspect	Performance Target	Completion Criteria*	Monitoring
<b>MNES Fauna Habitat</b>			
CBC foraging habitat	Presence of foraging habitat for CBCs	Areas are revegetated with suitable foraging species	Appropriate composition of rehabilitation seed/ seedling mix Species lists are generated
		Growth of suitable foraging species is maintained within the BOA	Vegetation and quadrat monitoring
		At least 115 ha of vegetation within the BOA meets the minimum Site Condition requirements for CBC Foraging	
Chuditch	Presence of suitable habitat for Chuditch	At least 70 ha of vegetation within the BOA meet the minimum Site Condition requirements for Chuditch	Vegetation and quadrat monitoring
		At least 70 ha of vegetation within the BOA meet the minimum Site Context requirements for Chuditch	
		Adequate den resources (e.g. hollow logs, burrows or rock crevices) are located or created within the BOA to support 70 ha of Chuditch habitat	Targeted site inspections are conducted to detect and map den resources
Malleefowl	Presence of suitable habitat for Malleefowl	At least 60 ha of vegetation within the BOA meet the minimum Vegetation Condition requirements for Malleefowl	Vegetation and quadrat monitoring

Medallion Metals Ltd

CO2 ISUIUTIS

Aspect	Performance Target	Completion Criteria*	Monitoring
		At least 60 ha of vegetation within the BOA meet the Vegetation structural requirements for Malleefowl	Vegetation and quadrat monitoring
		At least 60 ha of vegetation within the BOA meet the minimum Site Context requirements for Malleefowl	Vegetation and quadrat monitoring
<b>MNES Kwongan TEC</b>			
Species Diversity	Revegetated areas comprise species diversity and conditions /HQS appropriate to specified targets relative to TEC reference sites and published species lists	Areas are revegetated with suitable species	Composition of rehabilitation seed/seedling mix
Key Community Species		Growth of suitable species is maintained within revegetated areas	Vegetation and quadrat monitoring
Community Structure		Density and richness of native flora species within the enhanced restoration area are >70% of that within reference sites with a similar (within 10%) composition	
Diagnostic criteria		At least 54 ha of vegetation within the BOA meets the Diagnostic Criteria for the Kwongan TEC (as per HQS Criteria).	

Aspect	Performance Target	Completion Criteria*	Monitoring
Vegetation is self-sustaining	Kwongkan TEC vegetation demonstrates ability to continue in a healthy state, and at the same condition, without outside assistance	Greater than 50% of the native flora species within the Kwongkan TEC restoration area are recorded as having evidence of fruiting, flowering or seeding.	Vegetation and quadrat monitoring
<b>Supporting BOA values</b>			
Weed populations	Weeds are controlled within the BOA	Identified weed populations are reduced in size/density	Annual weed survey and control/removal in accordance with RGP Weed Management Procedures
		No additional weed species are introduced to the BOA	
		Weed management is conducted in accordance with Weed Management Procedures	
		No Weeds of National Significance, Declared Pests or species identified as posing a significant threat to relevant MNES occur within the BOA	
		The percentage coverage of non-significant/minor weed species is no greater than the reference sites.	Vegetation and quadrat monitoring
Introduced Fauna	Introduced fauna species are controlled within the BOA	No increase in the diversity or density of introduced fauna within the BOA.	Observations Indirect evidence (scat/tracks/grazing/predation) Review of Camera trap imagery.

Aspect	Performance Target	Completion Criteria*	Monitoring
		No increase in predation pressure on native species.	All sighting of introduced fauna at BOA to be reported to site Environmental Officer.
		The abundance of introduced fauna species within the BOA does not exceed that recorded at Reference Sites	Observations Indirect evidence (scat/tracks/grazing/predation) Review of Camera trap imagery.
		All waste generated at the BOA is managed appropriately	Regular monitoring of introduced predator abundance, via surveys, or bait uptake.
Reduced grazing pressure	Vegetation growth and recruitment in BOA is not adversely impacted by grazing animals	Evidence of recruitment and survival of native seedlings across the BOA	Vegetation and quadrat monitoring
	Ingress of large grazing animals into the BOA is restricted	A fence is constructed and maintained around the BOA, suitable to exclude large grazing animals such as kangaroos and introduced species such as sheep.	Audit to confirm construction and scheduled inspections and maintenance to maintain integrity
	Populations of grazing animals within the BOA do not adversely impact vegetation growth and recruitment	All large, introduced grazing animals such as sheep are removed from the BOA  Populations of native grazing animals, such as kangaroos, do not exceed the carrying capacity of the BOA	Observations Indirect evidence (scat/tracks/grazing/predation) Review of Camera trap imagery.

Aspect	Performance Target	Completion Criteria*	Monitoring
	Rabbit population within the BOA does not adversely impact vegetation growth and recruitment	Rabbit Density: Maintain populations below 0.5 rabbits per hectare in priority restoration areas.	
		Vegetation Recovery: Evidence of recruitment and survival of native seedlings in areas previously impacted by rabbit grazing.	Vegetation and quadrat monitoring
		Warren Activity: Reduction in active warrens by ≥80% within 12 months of control implementation.	Observations Indirect evidence (scat/tracks/grazing/predation) Review of Camera trap imagery.
		Weed Pressure: No increase in weed cover attributable to soil disturbance from rabbit activity.	Annual weed survey and control/removal in accordance with RGP Weed Management Procedures
Dieback management	No Dieback is introduced into the BOA as a result of Offset Project activities	A Dieback assessment of the BOA is completed annually from commencement until effective completion of the Project	Internal audits and inspections.
		Dieback management occurs in accordance with RGP Dieback Management Plan	
* Completion criteria values will be further informed by baseline studies/research to be completed and reviewed in consultation with DCCEEW/DBCA.			